

Acta Crystallographica Section E

Structure Reports

Online

ISSN 1600-5368

(E)-1-(6-Chloro-2-methyl-4-phenyl-3-quinolyl)-3-(2-methoxyphenyl)prop-2-en-1-one

 Wan-Sin Loh,^{a,‡} Hoong-Kun Fun,^{a,*§} S. Sarveswari,^b
 V. Vijayakumar^b and B. Palakshi Reddy^b

^aX-ray Crystallography Unit, School of Physics, Universiti Sains Malaysia, 11800 USM, Penang, Malaysia, and ^bOrganic Chemistry Division, School of Advanced Sciences, VIT University, Vellore 632 014, India
 Correspondence e-mail: hkfun@usm.my

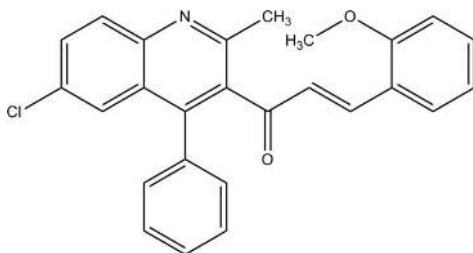
Received 4 January 2010; accepted 7 January 2010

Key indicators: single-crystal X-ray study; $T = 100$ K; mean $\sigma(\text{C}-\text{C}) = 0.002$ Å; R factor = 0.053; wR factor = 0.136; data-to-parameter ratio = 30.0.

In the title compound, $\text{C}_{26}\text{H}_{20}\text{ClNO}_2$, the quinoline ring system and the methoxyphenyl ring form dihedral angles of 69.97 (6) and 22.10 (10)°, respectively, with the propenone linkage. The 4-phenyl ring substituent on the quinoline ring system is oriented at a dihedral angle of 66.47 (3)°. In the crystal, molecules exist as $\text{C}-\text{H}\cdots\text{O}$ hydrogen-bonded dimers. The structure is further stabilized by $\text{C}-\text{H}\cdots\pi$ interactions.

Related literature

For background details and the biological activity of quinolines, see: Michael (1997); Markees *et al.* (1970); Kalluraya & Sreenivasa (1998); Chen *et al.* (2001). For the biological activity of chalcones, see: Dimmock *et al.* (1999); Zi & Simoneau (2005). For related structures, see: Loh *et al.* (2009a,b). For bond-length data, see: Allen *et al.* (1987). For the stability of the temperature controller used in the data collection, see: Cosier & Glazer (1986).


[‡] Thomson Reuters ResearcherID: C-7581-2009.

[§] Thomson Reuters ResearcherID: A-3561-2009.

Experimental

Crystal data

$\text{C}_{26}\text{H}_{20}\text{ClNO}_2$
 $M_r = 413.88$
 Monoclinic, $C2/c$
 $a = 15.1154$ (2) Å
 $b = 15.4655$ (2) Å
 $c = 17.2400$ (2) Å
 $\beta = 104.418$ (1)°
 $V = 3903.22$ (9) Å³
 $Z = 8$
 Mo $K\alpha$ radiation
 $\mu = 0.22$ mm⁻¹
 $T = 100$ K
 $0.39 \times 0.25 \times 0.19$ mm

Data collection

Bruker SMART APEXII CCD
 area-detector diffractometer
 Absorption correction: multi-scan
 (SADABS; Bruker, 2009)
 $T_{\min} = 0.919$, $T_{\max} = 0.960$
 30753 measured reflections
 8197 independent reflections
 5864 reflections with $I > 2\sigma(I)$
 $R_{\text{int}} = 0.039$

Refinement

$R[F^2 > 2\sigma(F^2)] = 0.053$
 $wR(F^2) = 0.136$
 $S = 1.06$
 8197 reflections
 273 parameters
 H-atom parameters constrained
 $\Delta\rho_{\max} = 0.54$ e Å⁻³
 $\Delta\rho_{\min} = -0.31$ e Å⁻³

Table 1

Hydrogen-bond geometry (Å, °).

Cg1 and Cg2 are the centroids of the $\text{C2}-\text{C7}$ and $\text{N1}/\text{C1}/\text{C2}/\text{C7}-\text{C9}$ rings, respectively.

| $D-\text{H}\cdots A$ | $D-\text{H}$ | $\text{H}\cdots A$ | $D\cdots A$ | $D-\text{H}\cdots A$ |
|--|--------------|--------------------|-------------|----------------------|
| $\text{C12}-\text{H12A}\cdots\text{O1}^{\text{i}}$ | 0.93 | 2.59 | 3.2963 (16) | 133 |
| $\text{C17}-\text{H17A}\cdots\text{Cg1}^{\text{ii}}$ | 0.93 | 2.96 | 3.6617 (14) | 134 |
| $\text{C20}-\text{H20A}\cdots\text{Cg2}^{\text{ii}}$ | 0.93 | 2.85 | 3.6353 (14) | 143 |

Symmetry codes: (i) $-x + \frac{1}{2}, -y + \frac{3}{2}, -z + 2$; (ii) $x, -y - 1, z + \frac{1}{2}$.

Data collection: APEX2 (Bruker, 2009); cell refinement: SAINT (Bruker, 2009); data reduction: SAINT; program(s) used to solve structure: SHELXTL (Sheldrick, 2008); program(s) used to refine structure: SHELXTL; molecular graphics: SHELXTL; software used to prepare material for publication: SHELXTL and PLATON (Spek, 2009).

HKF and WSL thank Universiti Sains Malaysia (USM) for the Research University Golden Goose grant No. 1001/PFIZIK/811012. WSL thanks the Malaysian government and USM for the award of the post of Assistant Research Officer under Research University Golden Goose grant No. 1001/PFIZIK/811012. VV is grateful to DST-India for funding through the Young Scientist Scheme (Fast Track Proposal).

Supplementary data and figures for this paper are available from the IUCr electronic archives (Reference: CI5015).

References

- Allen, F. H., Kennard, O., Watson, D. G., Brammer, L., Orpen, A. G. & Taylor, R. (1987). *J. Chem. Soc. Perkin Trans. 2*, pp. S1–19.
 Bruker (2009). APEX2, SAINT and SADABS. Bruker AXS Inc., Madison, Wisconsin, USA.
 Chen, Y.-L., Fang, K.-C., Sheu, J.-Y., Hsu, S.-L. & Tzeng, C.-C. (2001). *J. Med. Chem.* **44**, 2374–2377.
 Cosier, J. & Glazer, A. M. (1986). *J. Appl. Cryst.* **19**, 105–107.
 Dimmock, J. R., Elias, D. W., Beazely, M. A. & Kandepu, N. M. (1999). *Curr. Med. Chem.* **6**, 1125–1149.

- Kalluraya, B. & Sreenivasa, S. (1998). *Il Farmaco*, **53**, 399–404.
- Loh, W.-S., Fun, H.-K., Sarveswari, S., Vijayakumar, V. & Reddy, B. P. (2009a). *Acta Cryst.* **E65**, o3144–o3145.
- Loh, W.-S., Fun, H.-K., Sarveswari, S., Vijayakumar, V. & Reddy, B. P. (2009b). *Acta Cryst.* **E65**, o3237–o3238.
- Markees, D. G., Dewey, V. C. & Kidder, G. W. (1970). *J. Med. Chem.* **13**, 324–326.
- Michael, J. P. (1997). *Nat. Prod. Rep.* **14**, 605–608.
- Sheldrick, G. M. (2008). *Acta Cryst.* **A64**, 112–122.
- Spek, A. L. (2009). *Acta Cryst.* **D65**, 148–155.
- Zi, X. & Simoneau, A. R. (2005). *Cancer Res.* **65**, 3479–3486.

supporting information

Acta Cryst. (2010). E66, o353–o354 [https://doi.org/10.1107/S1600536810000784]

(E)-1-(6-Chloro-2-methyl-4-phenyl-3-quinolyl)-3-(2-methoxyphenyl)prop-2-en-1-one

Wan-Sin Loh, Hoong-Kun Fun, S. Sarveswari, V. Vijayakumar and B. Palakshi Reddy

S1. Comment

Quinoline and its derivatives are very important compounds because of their wide occurrence in natural products (Michael, 1997) and biologically active compounds (Markees *et al.*, 1970). A large variety of quinolines have interesting physiological activities and found attractive applications as pharmaceuticals, agrochemicals and as synthetic building blocks (Kalluraya & Sreenivasa, 1998; Chen *et al.*, 2001). The chalcones are open chain flavonoids, possessing a variety of biological activities, including antioxidant, anti-inflammation, antimicrobial, antiprotozoal, antiulcer, as well as other activities (Dimmock *et al.*, 1999). More importantly, chalcones have shown several anticancer activities as inhibitors of cancer cell proliferation, carcinogenesis and metastasis (Zi & Simoneau, 2005).

In the molecule of the title compound (Fig. 1), the quinoline ring system (C1–C9/N1) is approximately planar with a maximum deviation of 0.065 (1) Å for atom C9. The mean plane of the quinoline ring system forms a dihedral angle of 66.47 (3)° with the C10–C15 phenyl ring. The C1–C9/N1 and C19–C24 planes form dihedral angles of 69.97 (6) and 22.10 (10)°, respectively, with the O1/C16–C18 plane. Bond lengths (Allen *et al.*, 1987) and angles are within the normal range and are comparable to closely related structures (Loh *et al.*, 2009a; Loh *et al.*, 2009b).

In the crystal (Fig. 2), pairs of neighbouring molecules are arranged into dimers by pairs of intermolecular C12—H12A···O1 hydrogen bonds. The crystal structure is further stabilized by C—H··· π interactions (Table 1), involving C2–C7 (centroid *Cg*1) and N1/C1/C2/C7–C9 (centroid *Cg*2) rings.

S2. Experimental

A mixture of 3-acetyl-6-chloro-2-methyl-4-phenylquinoline (2.95 g, 0.01 mol), 2-methoxybenzaldehyde (1.36 g, 0.01 mol) and a catalytic amount of KOH in distilled ethanol was stirred for 12 h. The resulting mixture was concentrated to remove the ethanol and then poured onto ice and neutralized with diluted acetic acid. The resultant solid was filtered, dried and purified by column chromatography using a 1:1 mixture of ethyl acetate and petroleum ether (m.p. 403–405 K, yield: 68%).

S3. Refinement

H atoms were positioned geometrically [C–H = 0.93 or 0.96 Å] and were refined using a riding model, with $U_{\text{iso}}(\text{H}) = 1.2\text{--}1.5U_{\text{eq}}(\text{C})$. A rotating group model was applied to the methyl groups.

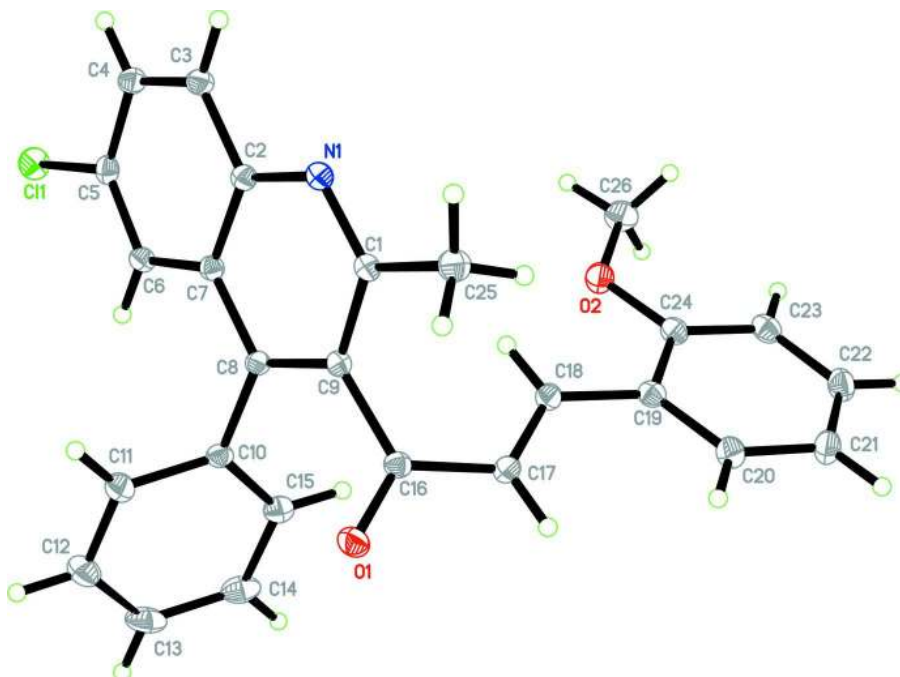


Figure 1

The molecular structure of the title compound, showing 50% probability displacement ellipsoids and the atom-numbering scheme.

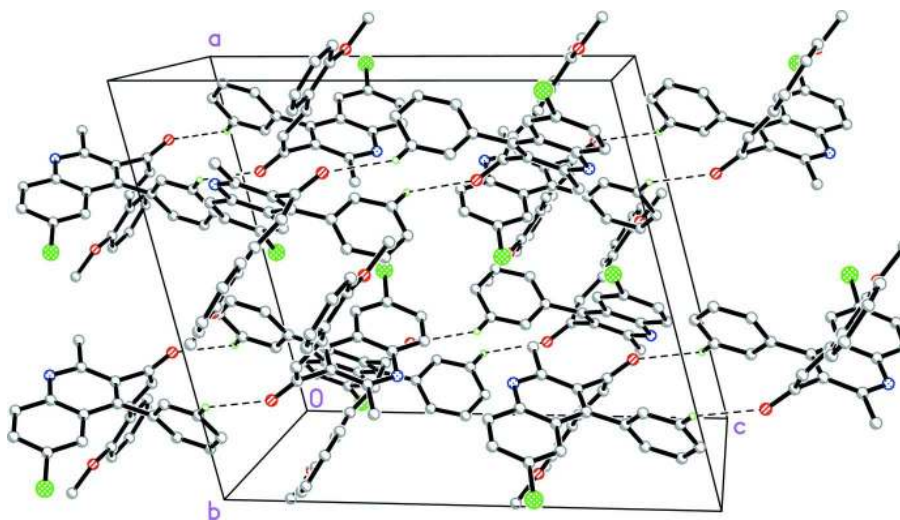


Figure 2

The crystal packing of the title compound, viewed approximately along the *b* axis, showing the dimers. H atoms not involved in the intermolecular interactions (dashed lines) have been omitted for clarity.

(*E*)-1-(6-Chloro-2-methyl-4-phenyl-3-quinolyl)-3-(2-methoxyphenyl)prop-2-en-1-one

Crystal data

$C_{26}H_{20}ClNO_2$

$M_r = 413.88$

Monoclinic, $C2/c$

Hall symbol: $-C 2yc$

$a = 15.1154(2) \text{ \AA}$

$b = 15.4655(2) \text{ \AA}$

$c = 17.2400 (2) \text{ \AA}$
 $\beta = 104.418 (1)^\circ$
 $V = 3903.22 (9) \text{ \AA}^3$
 $Z = 8$
 $F(000) = 1728$
 $D_x = 1.409 \text{ Mg m}^{-3}$
 Mo $K\alpha$ radiation, $\lambda = 0.71073 \text{ \AA}$

Cell parameters from 7486 reflections

$\theta = 2.4\text{--}31.5^\circ$
 $\mu = 0.22 \text{ mm}^{-1}$
 $T = 100 \text{ K}$
 Block, yellow
 $0.39 \times 0.25 \times 0.19 \text{ mm}$

Data collection

Bruker SMART APEXII CCD area-detector
 diffractometer
 Radiation source: fine-focus sealed tube
 Graphite monochromator
 φ and ω scans
 Absorption correction: multi-scan
 (SADABS; Bruker, 2009)
 $T_{\min} = 0.919$, $T_{\max} = 0.960$

30753 measured reflections
 8197 independent reflections
 5864 reflections with $I > 2\sigma(I)$
 $R_{\text{int}} = 0.039$
 $\theta_{\max} = 34.5^\circ$, $\theta_{\min} = 2.4^\circ$
 $h = -20 \rightarrow 24$
 $k = -24 \rightarrow 19$
 $l = -27 \rightarrow 27$

Refinement

Refinement on F^2
 Least-squares matrix: full
 $R[F^2 > 2\sigma(F^2)] = 0.053$
 $wR(F^2) = 0.136$
 $S = 1.06$
 8197 reflections
 273 parameters
 0 restraints
 Primary atom site location: structure-invariant
 direct methods

Secondary atom site location: difference Fourier
 map
 Hydrogen site location: inferred from
 neighbouring sites
 H-atom parameters constrained
 $w = 1/[\sigma^2(F_o^2) + (0.0625P)^2 + 0.7227P]$
 where $P = (F_o^2 + 2F_c^2)/3$
 $(\Delta/\sigma)_{\max} = 0.001$
 $\Delta\rho_{\max} = 0.54 \text{ e \AA}^{-3}$
 $\Delta\rho_{\min} = -0.31 \text{ e \AA}^{-3}$

Special details

Experimental. The crystal was placed in the cold stream of an Oxford Cyrosystems Cobra open-flow nitrogen cryostat (Cosier & Glazer, 1986) operating at 100.0 (1) K.

Geometry. All e.s.d.'s (except the e.s.d. in the dihedral angle between two l.s. planes) are estimated using the full covariance matrix. The cell e.s.d.'s are taken into account individually in the estimation of e.s.d.'s in distances, angles and torsion angles; correlations between e.s.d.'s in cell parameters are only used when they are defined by crystal symmetry. An approximate (isotropic) treatment of cell e.s.d.'s is used for estimating e.s.d.'s involving l.s. planes.

Refinement. Refinement of F^2 against ALL reflections. The weighted R -factor wR and goodness of fit S are based on F^2 , conventional R -factors R are based on F , with F set to zero for negative F^2 . The threshold expression of $F^2 > \sigma(F^2)$ is used only for calculating R -factors(gt) etc. and is not relevant to the choice of reflections for refinement. R -factors based on F^2 are statistically about twice as large as those based on F , and R -factors based on ALL data will be even larger.

Fractional atomic coordinates and isotropic or equivalent isotropic displacement parameters (\AA^2)

| | x | y | z | $U_{\text{iso}}^*/U_{\text{eq}}$ |
|-----|--------------|-------------|---------------|----------------------------------|
| Cl1 | 0.02177 (2) | 1.01758 (2) | 0.635395 (19) | 0.01901 (8) |
| O1 | 0.27571 (6) | 0.58953 (6) | 0.86651 (5) | 0.0176 (2) |
| O2 | -0.04599 (6) | 0.49228 (6) | 0.58651 (5) | 0.0182 (2) |
| N1 | 0.23373 (7) | 0.70354 (7) | 0.61280 (6) | 0.0132 (2) |
| C1 | 0.24441 (8) | 0.64331 (8) | 0.66867 (7) | 0.0119 (2) |
| C2 | 0.18686 (8) | 0.77723 (8) | 0.62237 (7) | 0.0118 (2) |
| C3 | 0.17164 (9) | 0.83936 (8) | 0.55976 (7) | 0.0140 (2) |
| H3A | 0.1948 | 0.8299 | 0.5153 | 0.017* |

| | | | | |
|------|---------------|--------------|-------------|------------|
| C4 | 0.12304 (9) | 0.91308 (8) | 0.56457 (7) | 0.0147 (2) |
| H4A | 0.1130 | 0.9538 | 0.5236 | 0.018* |
| C5 | 0.08838 (8) | 0.92650 (8) | 0.63233 (7) | 0.0137 (2) |
| C6 | 0.10437 (8) | 0.87006 (8) | 0.69522 (7) | 0.0130 (2) |
| H6A | 0.0826 | 0.8818 | 0.7400 | 0.016* |
| C7 | 0.15466 (8) | 0.79326 (8) | 0.69143 (7) | 0.0114 (2) |
| C8 | 0.17037 (8) | 0.72900 (8) | 0.75300 (7) | 0.0113 (2) |
| C9 | 0.21100 (8) | 0.65250 (8) | 0.73916 (7) | 0.0117 (2) |
| C10 | 0.14444 (8) | 0.74686 (8) | 0.82932 (7) | 0.0126 (2) |
| C11 | 0.18819 (9) | 0.81414 (9) | 0.87804 (8) | 0.0184 (3) |
| H11A | 0.2323 | 0.8468 | 0.8622 | 0.022* |
| C12 | 0.16655 (11) | 0.83282 (10) | 0.94971 (8) | 0.0234 (3) |
| H12A | 0.1966 | 0.8774 | 0.9819 | 0.028* |
| C13 | 0.10036 (10) | 0.78525 (10) | 0.97343 (8) | 0.0236 (3) |
| H13A | 0.0853 | 0.7983 | 1.0212 | 0.028* |
| C14 | 0.05658 (9) | 0.71812 (10) | 0.92586 (8) | 0.0213 (3) |
| H14A | 0.0122 | 0.6860 | 0.9419 | 0.026* |
| C15 | 0.07867 (9) | 0.69836 (9) | 0.85395 (7) | 0.0166 (2) |
| H15A | 0.0495 | 0.6528 | 0.8225 | 0.020* |
| C16 | 0.22442 (8) | 0.57996 (8) | 0.79974 (7) | 0.0125 (2) |
| C17 | 0.17554 (9) | 0.49843 (8) | 0.77583 (7) | 0.0144 (2) |
| H17A | 0.1908 | 0.4509 | 0.8095 | 0.017* |
| C18 | 0.10990 (9) | 0.48907 (8) | 0.70786 (7) | 0.0137 (2) |
| H18A | 0.0929 | 0.5384 | 0.6769 | 0.016* |
| C19 | 0.06258 (8) | 0.40889 (8) | 0.67781 (7) | 0.0135 (2) |
| C20 | 0.09598 (9) | 0.32817 (8) | 0.70747 (8) | 0.0161 (2) |
| H20A | 0.1493 | 0.3253 | 0.7484 | 0.019* |
| C21 | 0.05186 (9) | 0.25228 (9) | 0.67757 (8) | 0.0186 (3) |
| H21A | 0.0758 | 0.1990 | 0.6974 | 0.022* |
| C22 | -0.02865 (9) | 0.25684 (9) | 0.61751 (8) | 0.0193 (3) |
| H22A | -0.0595 | 0.2062 | 0.5983 | 0.023* |
| C23 | -0.06371 (9) | 0.33563 (9) | 0.58583 (8) | 0.0171 (3) |
| H23A | -0.1175 | 0.3377 | 0.5454 | 0.021* |
| C24 | -0.01789 (9) | 0.41163 (8) | 0.61490 (7) | 0.0148 (2) |
| C25 | 0.29908 (9) | 0.56529 (8) | 0.65696 (8) | 0.0170 (2) |
| H25A | 0.3273 | 0.5758 | 0.6137 | 0.026* |
| H25B | 0.2594 | 0.5160 | 0.6445 | 0.026* |
| H25C | 0.3454 | 0.5542 | 0.7052 | 0.026* |
| C26 | -0.12419 (10) | 0.49727 (10) | 0.51992 (8) | 0.0213 (3) |
| H26A | -0.1348 | 0.5564 | 0.5034 | 0.032* |
| H26B | -0.1767 | 0.4752 | 0.5353 | 0.032* |
| H26C | -0.1136 | 0.4636 | 0.4763 | 0.032* |

Atomic displacement parameters (\AA^2)

| | U^{11} | U^{22} | U^{33} | U^{12} | U^{13} | U^{23} |
|-----|--------------|--------------|--------------|--------------|--------------|--------------|
| Cl1 | 0.01956 (16) | 0.01561 (16) | 0.02069 (15) | 0.00653 (12) | 0.00279 (12) | 0.00098 (11) |
| O1 | 0.0204 (5) | 0.0172 (5) | 0.0129 (4) | 0.0012 (4) | -0.0004 (3) | -0.0009 (3) |

| | | | | | | |
|-----|------------|------------|------------|-------------|-------------|-------------|
| O2 | 0.0176 (5) | 0.0162 (5) | 0.0172 (4) | 0.0006 (4) | -0.0022 (4) | 0.0005 (3) |
| N1 | 0.0144 (5) | 0.0130 (5) | 0.0124 (4) | 0.0001 (4) | 0.0039 (4) | -0.0009 (4) |
| C1 | 0.0120 (5) | 0.0122 (6) | 0.0117 (5) | -0.0003 (4) | 0.0030 (4) | -0.0017 (4) |
| C2 | 0.0109 (5) | 0.0123 (5) | 0.0119 (5) | -0.0004 (4) | 0.0026 (4) | -0.0004 (4) |
| C3 | 0.0148 (6) | 0.0156 (6) | 0.0112 (5) | -0.0014 (4) | 0.0025 (4) | 0.0004 (4) |
| C4 | 0.0158 (6) | 0.0147 (6) | 0.0125 (5) | -0.0006 (5) | 0.0013 (4) | 0.0014 (4) |
| C5 | 0.0130 (6) | 0.0110 (5) | 0.0155 (5) | 0.0003 (4) | 0.0008 (4) | -0.0005 (4) |
| C6 | 0.0139 (5) | 0.0135 (6) | 0.0118 (5) | 0.0002 (4) | 0.0034 (4) | -0.0010 (4) |
| C7 | 0.0108 (5) | 0.0120 (6) | 0.0111 (5) | -0.0003 (4) | 0.0021 (4) | -0.0001 (4) |
| C8 | 0.0113 (5) | 0.0121 (5) | 0.0106 (5) | -0.0017 (4) | 0.0028 (4) | -0.0001 (4) |
| C9 | 0.0120 (5) | 0.0116 (5) | 0.0111 (5) | -0.0007 (4) | 0.0022 (4) | -0.0005 (4) |
| C10 | 0.0152 (6) | 0.0121 (5) | 0.0107 (5) | 0.0031 (4) | 0.0038 (4) | 0.0011 (4) |
| C11 | 0.0228 (7) | 0.0180 (6) | 0.0154 (5) | -0.0025 (5) | 0.0069 (5) | -0.0022 (5) |
| C12 | 0.0329 (8) | 0.0227 (7) | 0.0153 (6) | 0.0010 (6) | 0.0073 (6) | -0.0046 (5) |
| C13 | 0.0293 (8) | 0.0305 (8) | 0.0135 (5) | 0.0091 (6) | 0.0103 (5) | 0.0023 (5) |
| C14 | 0.0206 (7) | 0.0282 (8) | 0.0186 (6) | 0.0042 (6) | 0.0116 (5) | 0.0059 (5) |
| C15 | 0.0170 (6) | 0.0179 (6) | 0.0157 (5) | 0.0009 (5) | 0.0054 (5) | 0.0019 (5) |
| C16 | 0.0132 (5) | 0.0132 (6) | 0.0116 (5) | 0.0015 (4) | 0.0042 (4) | -0.0001 (4) |
| C17 | 0.0180 (6) | 0.0119 (6) | 0.0139 (5) | 0.0003 (4) | 0.0052 (5) | 0.0012 (4) |
| C18 | 0.0152 (6) | 0.0129 (6) | 0.0136 (5) | -0.0001 (4) | 0.0047 (4) | -0.0003 (4) |
| C19 | 0.0126 (5) | 0.0155 (6) | 0.0132 (5) | -0.0009 (4) | 0.0047 (4) | -0.0006 (4) |
| C20 | 0.0140 (6) | 0.0166 (6) | 0.0170 (6) | 0.0000 (5) | 0.0026 (5) | -0.0017 (5) |
| C21 | 0.0200 (6) | 0.0130 (6) | 0.0218 (6) | 0.0005 (5) | 0.0036 (5) | -0.0012 (5) |
| C22 | 0.0215 (7) | 0.0163 (6) | 0.0201 (6) | -0.0037 (5) | 0.0052 (5) | -0.0041 (5) |
| C23 | 0.0156 (6) | 0.0204 (6) | 0.0150 (5) | -0.0024 (5) | 0.0032 (5) | -0.0031 (5) |
| C24 | 0.0144 (6) | 0.0167 (6) | 0.0140 (5) | 0.0004 (5) | 0.0048 (4) | -0.0016 (4) |
| C25 | 0.0193 (6) | 0.0160 (6) | 0.0168 (6) | 0.0046 (5) | 0.0065 (5) | 0.0005 (5) |
| C26 | 0.0179 (7) | 0.0245 (7) | 0.0178 (6) | 0.0014 (5) | -0.0025 (5) | 0.0019 (5) |

Geometric parameters (Å, °)

| | | | |
|--------|-------------|----------|-------------|
| C11—C5 | 1.7397 (13) | C13—C14 | 1.385 (2) |
| O1—C16 | 1.2262 (14) | C13—H13A | 0.93 |
| O2—C24 | 1.3683 (15) | C14—C15 | 1.3956 (17) |
| O2—C26 | 1.4302 (16) | C14—H14A | 0.93 |
| N1—C1 | 1.3207 (15) | C15—H15A | 0.93 |
| N1—C2 | 1.3733 (15) | C16—C17 | 1.4678 (18) |
| C1—C9 | 1.4344 (16) | C17—C18 | 1.3414 (17) |
| C1—C25 | 1.5042 (17) | C17—H17A | 0.93 |
| C2—C7 | 1.4158 (16) | C18—C19 | 1.4606 (18) |
| C2—C3 | 1.4205 (17) | C18—H18A | 0.93 |
| C3—C4 | 1.3700 (18) | C19—C20 | 1.3951 (18) |
| C3—H3A | 0.93 | C19—C24 | 1.4144 (18) |
| C4—C5 | 1.4098 (17) | C20—C21 | 1.3845 (18) |
| C4—H4A | 0.93 | C20—H20A | 0.93 |
| C5—C6 | 1.3657 (16) | C21—C22 | 1.3895 (18) |
| C6—C7 | 1.4204 (17) | C21—H21A | 0.93 |
| C6—H6A | 0.93 | C22—C23 | 1.3855 (19) |

| | | | |
|--------------|-------------|---------------|-------------|
| C7—C8 | 1.4302 (16) | C22—H22A | 0.93 |
| C8—C9 | 1.3808 (17) | C23—C24 | 1.3926 (18) |
| C8—C10 | 1.4893 (16) | C23—H23A | 0.93 |
| C9—C16 | 1.5116 (17) | C25—H25A | 0.96 |
| C10—C15 | 1.3934 (18) | C25—H25B | 0.96 |
| C10—C11 | 1.3960 (18) | C25—H25C | 0.96 |
| C11—C12 | 1.3851 (18) | C26—H26A | 0.96 |
| C11—H11A | 0.93 | C26—H26B | 0.96 |
| C12—C13 | 1.383 (2) | C26—H26C | 0.96 |
| C12—H12A | 0.93 | | |
| | | | |
| C24—O2—C26 | 117.21 (10) | C15—C14—H14A | 119.8 |
| C1—N1—C2 | 118.08 (10) | C10—C15—C14 | 119.97 (12) |
| N1—C1—C9 | 122.90 (11) | C10—C15—H15A | 120.0 |
| N1—C1—C25 | 116.07 (10) | C14—C15—H15A | 120.0 |
| C9—C1—C25 | 120.94 (10) | O1—C16—C17 | 121.58 (11) |
| N1—C2—C7 | 122.82 (11) | O1—C16—C9 | 120.26 (11) |
| N1—C2—C3 | 117.44 (10) | C17—C16—C9 | 118.16 (10) |
| C7—C2—C3 | 119.74 (11) | C18—C17—C16 | 123.30 (11) |
| C4—C3—C2 | 120.32 (11) | C18—C17—H17A | 118.3 |
| C4—C3—H3A | 119.8 | C16—C17—H17A | 118.3 |
| C2—C3—H3A | 119.8 | C17—C18—C19 | 126.29 (12) |
| C3—C4—C5 | 119.23 (11) | C17—C18—H18A | 116.9 |
| C3—C4—H4A | 120.4 | C19—C18—H18A | 116.9 |
| C5—C4—H4A | 120.4 | C20—C19—C24 | 118.13 (11) |
| C6—C5—C4 | 122.34 (11) | C20—C19—C18 | 121.94 (11) |
| C6—C5—C11 | 118.87 (10) | C24—C19—C18 | 119.89 (11) |
| C4—C5—C11 | 118.79 (9) | C21—C20—C19 | 121.69 (12) |
| C5—C6—C7 | 119.27 (11) | C21—C20—H20A | 119.2 |
| C5—C6—H6A | 120.4 | C19—C20—H20A | 119.2 |
| C7—C6—H6A | 120.4 | C20—C21—C22 | 119.06 (12) |
| C2—C7—C6 | 119.02 (10) | C20—C21—H21A | 120.5 |
| C2—C7—C8 | 118.30 (11) | C22—C21—H21A | 120.5 |
| C6—C7—C8 | 122.60 (11) | C23—C22—C21 | 121.09 (12) |
| C9—C8—C7 | 117.77 (10) | C23—C22—H22A | 119.5 |
| C9—C8—C10 | 122.53 (10) | C21—C22—H22A | 119.5 |
| C7—C8—C10 | 119.68 (11) | C22—C23—C24 | 119.56 (12) |
| C8—C9—C1 | 119.79 (10) | C22—C23—H23A | 120.2 |
| C8—C9—C16 | 120.36 (10) | C24—C23—H23A | 120.2 |
| C1—C9—C16 | 119.79 (10) | O2—C24—C23 | 123.95 (11) |
| C15—C10—C11 | 119.01 (11) | O2—C24—C19 | 115.63 (11) |
| C15—C10—C8 | 122.28 (11) | C23—C24—C19 | 120.42 (12) |
| C11—C10—C8 | 118.71 (11) | C1—C25—H25A | 109.5 |
| C12—C11—C10 | 120.69 (13) | C1—C25—H25B | 109.5 |
| C12—C11—H11A | 119.7 | H25A—C25—H25B | 109.5 |
| C10—C11—H11A | 119.7 | C1—C25—H25C | 109.5 |
| C13—C12—C11 | 120.11 (13) | H25A—C25—H25C | 109.5 |
| C13—C12—H12A | 119.9 | H25B—C25—H25C | 109.5 |

| | | | |
|---------------|--------------|-----------------|--------------|
| C11—C12—H12A | 119.9 | O2—C26—H26A | 109.5 |
| C12—C13—C14 | 119.85 (12) | O2—C26—H26B | 109.5 |
| C12—C13—H13A | 120.1 | H26A—C26—H26B | 109.5 |
| C14—C13—H13A | 120.1 | O2—C26—H26C | 109.5 |
| C13—C14—C15 | 120.36 (13) | H26A—C26—H26C | 109.5 |
| C13—C14—H14A | 119.8 | H26B—C26—H26C | 109.5 |
| | | | |
| C2—N1—C1—C9 | -1.36 (17) | C7—C8—C10—C11 | -63.24 (16) |
| C2—N1—C1—C25 | -177.88 (10) | C15—C10—C11—C12 | -0.21 (19) |
| C1—N1—C2—C7 | 3.89 (17) | C8—C10—C11—C12 | -179.71 (12) |
| C1—N1—C2—C3 | -176.69 (11) | C10—C11—C12—C13 | -0.6 (2) |
| N1—C2—C3—C4 | 178.10 (11) | C11—C12—C13—C14 | 0.9 (2) |
| C7—C2—C3—C4 | -2.46 (18) | C12—C13—C14—C15 | -0.2 (2) |
| C2—C3—C4—C5 | 0.00 (18) | C11—C10—C15—C14 | 0.85 (19) |
| C3—C4—C5—C6 | 2.54 (19) | C8—C10—C15—C14 | -179.67 (11) |
| C3—C4—C5—C11 | -176.70 (10) | C13—C14—C15—C10 | -0.6 (2) |
| C4—C5—C6—C7 | -2.50 (18) | C8—C9—C16—O1 | -64.94 (16) |
| C11—C5—C6—C7 | 176.75 (9) | C1—C9—C16—O1 | 112.20 (13) |
| N1—C2—C7—C6 | -178.11 (11) | C8—C9—C16—C17 | 115.85 (13) |
| C3—C2—C7—C6 | 2.48 (17) | C1—C9—C16—C17 | -67.02 (15) |
| N1—C2—C7—C8 | -1.18 (17) | O1—C16—C17—C18 | 170.75 (12) |
| C3—C2—C7—C8 | 179.42 (11) | C9—C16—C17—C18 | -10.04 (18) |
| C5—C6—C7—C2 | -0.04 (17) | C16—C17—C18—C19 | 175.84 (12) |
| C5—C6—C7—C8 | -176.84 (11) | C17—C18—C19—C20 | -15.8 (2) |
| C2—C7—C8—C9 | -4.05 (17) | C17—C18—C19—C24 | 166.47 (12) |
| C6—C7—C8—C9 | 172.77 (11) | C24—C19—C20—C21 | -0.80 (18) |
| C2—C7—C8—C10 | 174.87 (11) | C18—C19—C20—C21 | -178.61 (12) |
| C6—C7—C8—C10 | -8.31 (17) | C19—C20—C21—C22 | -1.21 (19) |
| C7—C8—C9—C1 | 6.47 (17) | C20—C21—C22—C23 | 1.8 (2) |
| C10—C8—C9—C1 | -172.42 (11) | C21—C22—C23—C24 | -0.39 (19) |
| C7—C8—C9—C16 | -176.40 (10) | C26—O2—C24—C23 | -3.77 (18) |
| C10—C8—C9—C16 | 4.71 (18) | C26—O2—C24—C19 | 176.59 (11) |
| N1—C1—C9—C8 | -3.94 (18) | C22—C23—C24—O2 | 178.69 (12) |
| C25—C1—C9—C8 | 172.42 (11) | C22—C23—C24—C19 | -1.69 (19) |
| N1—C1—C9—C16 | 178.91 (11) | C20—C19—C24—O2 | -178.09 (11) |
| C25—C1—C9—C16 | -4.73 (17) | C18—C19—C24—O2 | -0.24 (17) |
| C9—C8—C10—C15 | -63.86 (17) | C20—C19—C24—C23 | 2.26 (18) |
| C7—C8—C10—C15 | 117.28 (13) | C18—C19—C24—C23 | -179.89 (11) |
| C9—C8—C10—C11 | 115.63 (14) | | |

Hydrogen-bond geometry (\AA , $^\circ$)

| $D-H\cdots A$ | $D-H$ | $H\cdots A$ | $D\cdots A$ | $D-H\cdots A$ |
|-------------------------------------|-------|-------------|-------------|---------------|
| C12—H12A \cdots O1 ⁱ | 0.93 | 2.59 | 3.2963 (16) | 133 |
| C17—H17A \cdots Cg1 ⁱⁱ | 0.93 | 2.96 | 3.6617 (14) | 134 |
| C20—H20A \cdots Cg2 ⁱⁱ | 0.93 | 2.85 | 3.6353 (14) | 143 |

Symmetry codes: (i) $-x+1/2, -y+3/2, -z+2$; (ii) $x, -y-1, z+1/2$.