

Acta Crystallographica Section E

**Structure Reports**
**Online**

ISSN 1600-5368

## (2-Chloro-8-methylquinolin-3-yl)-methanol

 S. Mohana Roopan,<sup>a</sup> F. Nawaz Khan,<sup>a</sup> Rajesh Kumar,<sup>a</sup> Venkatesha R. Hathwar<sup>b</sup> and Mehmet Akkurt<sup>c\*</sup>

<sup>a</sup>Organic and Medicinal Chemistry Research Laboratory, Organic Chemistry Division, School of Advanced Sciences, VIT University, Vellore 632 014, Tamil Nadu, India, <sup>b</sup>Solid State and Structural Chemistry Unit, Indian Institute of Science, Bangalore 560 012, Karnataka, India, and <sup>c</sup>Department of Physics, Faculty of Arts and Sciences, Erciyes University, 38039 Kayseri, Turkey  
Correspondence e-mail: akkurt@erciyes.edu.tr

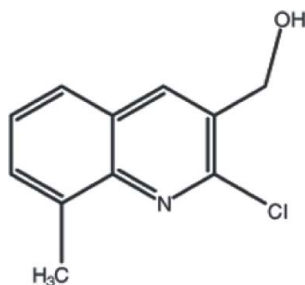
Received 25 May 2010; accepted 29 May 2010

Key indicators: single-crystal X-ray study;  $T = 290$  K; mean  $\sigma(\text{C}-\text{C}) = 0.006$  Å;  $R$  factor = 0.061;  $wR$  factor = 0.135; data-to-parameter ratio = 13.4.

The molecule of title compound,  $\text{C}_{11}\text{H}_{10}\text{ClNO}$ , is close to being planar (r.m.s deviation for the non-H atoms = 0.017 Å). In the crystal, molecules interact by way of  $\text{O}-\text{H}\cdots\text{O}$  hydrogen bonds, generating  $C(2)$  chains propagating in [010]. The crystal structure is consolidated by  $\text{C}-\text{H}\cdots\pi$  interactions and aromatic  $\pi-\pi$  stacking interactions [centroid-centroid distance = 3.661 (2) Å].

### Related literature

For a related structure and background references, see: Roopan *et al.* (2010). For a similar structure, see: Khan *et al.* (2009).



### Experimental

#### Crystal data

$\text{C}_{11}\text{H}_{10}\text{ClNO}$   
 $M_r = 207.65$

Monoclinic,  $P2_1/c$   
 $a = 14.963$  (2) Å

$b = 4.632$  (1) Å  
 $c = 14.469$  (2) Å  
 $\beta = 103.612$  (1)°  
 $V = 974.7$  (3) Å<sup>3</sup>  
 $Z = 4$

Mo  $K\alpha$  radiation  
 $\mu = 0.35$  mm<sup>-1</sup>  
 $T = 290$  K  
 $0.40 \times 0.24 \times 0.11$  mm

#### Data collection

Oxford Xcalibur Eos(Nova) CCD detector diffractometer  
Absorption correction: multi-scan (*CrysAlis PRO RED*; Oxford Diffraction, 2009)  
 $T_{\min} = 0.871$ ,  $T_{\max} = 0.962$

7607 measured reflections  
1723 independent reflections  
790 reflections with  $I > 2\sigma(I)$   
 $R_{\text{int}} = 0.167$

#### Refinement

$R[F^2 > 2\sigma(F^2)] = 0.061$   
 $wR(F^2) = 0.135$   
 $S = 0.85$   
1723 reflections

129 parameters  
H-atom parameters constrained  
 $\Delta\rho_{\text{max}} = 0.23$  e Å<sup>-3</sup>  
 $\Delta\rho_{\text{min}} = -0.23$  e Å<sup>-3</sup>

**Table 1**

Hydrogen-bond geometry (Å, °).

Cg1 is a centroid of the N1/C1–C3/C8/C9 ring.

$D-H\cdots A$	$D-H$	$H\cdots A$	$D\cdots A$	$D-H\cdots A$
$\text{O1}-\text{H1O}\cdots\text{O1}^{\text{i}}$	0.82	1.90	2.712 (4)	174
$\text{C10}-\text{H10A}\cdots\text{Cg1}^{\text{ii}}$	0.97	2.75	3.557 (4)	141

 Symmetry codes: (i)  $-x, y - \frac{1}{2}, -z + \frac{1}{2}$ ; (ii)  $x, y + 1, z$ .

Data collection: *CrysAlis PRO CCD* (Oxford Diffraction, 2009); cell refinement: *CrysAlis PRO CCD*; data reduction: *CrysAlis PRO RED* (Oxford Diffraction, 2009); program(s) used to solve structure: *SHELXS97* (Sheldrick, 2008); program(s) used to refine structure: *SHELXL97* (Sheldrick, 2008); molecular graphics: *ORTEP-3* (Farrugia, 1997); software used to prepare material for publication: *WinGX* (Farrugia, 1999).

We thank the Department of Science and Technology, India, for the use of the CCD facility set up under the FIST-DST program at SSCU, IISc. We also thank Professor T. N. Guru Row, IISc, Bangalore, for his help with the data collection. FNK thanks the DST for Fast Track Proposal funding.

Supplementary data and figures for this paper are available from the IUCr electronic archives (Reference: HB5470).

### References

- Farrugia, L. J. (1997). *J. Appl. Cryst.* **30**, 565.  
Farrugia, L. J. (1999). *J. Appl. Cryst.* **32**, 837–838.  
Khan, F. N., Subashini, R., Kushwaha, A. K., Hathwar, V. R. & Ng, S. W. (2009). *Acta Cryst.* **E65**, o2722.  
Oxford Diffraction (2009). *CrysAlis PRO CCD* and *CrysAlis PRO RED*. Oxford Diffraction Ltd, Yarnton, Oxfordshire, England.  
Roopan, S. N., Khan, F. N., Kumar, A. S., Hathwar, V. R. & Akkurt, M. (2010). *Acta Cryst.* **E66**, o1542.  
Sheldrick, G. M. (2008). *Acta Cryst.* **A64**, 112–122.

**supplementary materials**

*Acta Cryst.* (2010). E66, o1543 [ doi:10.1107/S1600536810020490 ]

## (2-Chloro-8-methylquinolin-3-yl)methanol

S. M. Roopan, F. N. Khan, R. Kumar, V. R. Hathwar and M. Akkurt

### Comment

As part of our program which aimed to develop new selective and environmentally friendly methodologies for the preparation of 2-chloroquinolines (Roopan *et al.*, 2010), we report here crystal structure of the title compound, (I).

The title molecule (I), (Fig. 1), except the hydroxyl and methyl H atoms, close to planar (r.m.s deviation 0.017 Å). The values of the geometric parameters in (I) are comparable to those of some similar structures (Khan *et al.*, 2009).

In the solid-state, the molecules are linked *via* intermolecular O—H...O hydrogen bonds (Table 1, Fig. 2). The crystal structure is further stabilized by an intermolecular C—H... $\pi$  interactions between the methylene H atom of ethenol substituent and the pyridine ring of an adjacent molecule, with a C10—H10A...Cg1<sup>ii</sup> separation of 2.75 Å (Table 1, Cg1 is the centroid of N1/C1—C3/C8/C9 pyridine ring; symmetry code: (ii)  $x, y + 1, z$ ). In addition, the packing mode results in stabilizing  $\pi$ - $\pi$  stacking interactions [ $Cg1 \cdots Cg2^{ii} = 3.661(2)$  Å, where Cg1 and Cg2 are the centroids of the N1/C1—C3/C8/C9 and C4—C9 rings].

### Experimental

2-Chloro-8-methylquinoline-3-carbaldehyde (206 mg, 1 mmol), sodium borohydride (38 mg, 1 mmol) and catalytic amount of montmorillonite K-10 were taken in an open vessel and the resulting mixture was irradiating at 500 W for 4 min. Ethylacetate was poured into the reaction mixture and filtered off. The filtrate after removal of solvent ethyl acetate was subjected to column chromatography packed with silica and ethyl acetate/petroleum ether was used as the eluant. Colourless plates of (I) were grown by solvent evaporation from a solution of the compound in chloroform.

### Refinement

H atoms were positioned geometrically, with C—H = 0.93–0.97 Å, and refined a riding model with  $U_{iso}(H) = 1.2$  or  $1.5 U_{eq}(C)$ . The value of  $R_{int}$  [0.167] is greater than 0.12, which may reflect the poor crystal quality.

### Figures

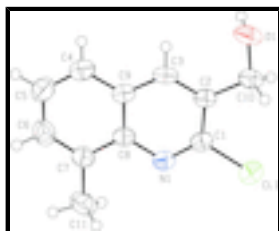


Fig. 1. The molecule of (I), showing 50% probability displacement ellipsoids.

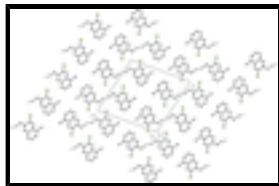


Fig. 2. A view of the packing of (I) with intermolecular O–H···O hydrogen bonding down the *b* axis. The H atoms not involved in hydrogen bonds have been omitted for clarity.

## (2-Chloro-8-methylquinolin-3-yl)methanol

### Crystal data

$C_{11}H_{10}ClNO$

$M_r = 207.65$

Monoclinic,  $P2_1/c$

Hall symbol: -P 2ybc

$a = 14.963$  (2) Å

$b = 4.632$  (1) Å

$c = 14.469$  (2) Å

$\beta = 103.612$  (1)°

$V = 974.7$  (3) Å<sup>3</sup>

$Z = 4$

$F(000) = 432$

$D_x = 1.415$  Mg m<sup>-3</sup>

Mo  $K\alpha$  radiation,  $\lambda = 0.71073$  Å

Cell parameters from 972 reflections

$\theta = 2.0$ – $20.5$ °

$\mu = 0.35$  mm<sup>-1</sup>

$T = 290$  K

Plate, colourless

$0.40 \times 0.24 \times 0.11$  mm

### Data collection

Oxford Xcalibur Eos(Nova) CCD detector diffractometer

Radiation source: Enhance (Mo) X-ray Source graphite

$\omega$  scans

Absorption correction: multi-scan (*CrysAlis PRO* RED; Oxford Diffraction, 2009)

$T_{\min} = 0.871$ ,  $T_{\max} = 0.962$

7607 measured reflections

1723 independent reflections

790 reflections with  $I > 2\sigma(I)$

$R_{\text{int}} = 0.167$

$\theta_{\max} = 25.0$ °,  $\theta_{\min} = 2.9$ °

$h = -17 \rightarrow 17$

$k = -5 \rightarrow 5$

$l = -17 \rightarrow 17$

### Refinement

Refinement on  $F^2$

Least-squares matrix: full

$R[F^2 > 2\sigma(F^2)] = 0.061$

$wR(F^2) = 0.135$

$S = 0.85$

1723 reflections

129 parameters

0 restraints

Primary atom site location: structure-invariant direct methods

Secondary atom site location: difference Fourier map

Hydrogen site location: inferred from neighbouring sites

H-atom parameters constrained

$w = 1/[\sigma^2(F_o^2) + (0.0492P)^2]$

where  $P = (F_o^2 + 2F_c^2)/3$

$(\Delta/\sigma)_{\max} < 0.001$

$\Delta\rho_{\max} = 0.23$  e Å<sup>-3</sup>

$\Delta\rho_{\min} = -0.23$  e Å<sup>-3</sup>

*Special details*

**Geometry.** Bond distances, angles *etc.* have been calculated using the rounded fractional coordinates. All su's are estimated from the variances of the (full) variance-covariance matrix. The cell e.s.d.'s are taken into account in the estimation of distances, angles and torsion angles

**Refinement.** Refinement on  $F^2$  for ALL reflections except those flagged by the user for potential systematic errors. Weighted  $R$ -factors  $wR$  and all goodnesses of fit  $S$  are based on  $F^2$ , conventional  $R$ -factors  $R$  are based on  $F$ , with  $F$  set to zero for negative  $F^2$ . The observed criterion of  $F^2 > \sigma(F^2)$  is used only for calculating  $-R$ -factor-obs *etc.* and is not relevant to the choice of reflections for refinement.  $R$ -factors based on  $F^2$  are statistically about twice as large as those based on  $F$ , and  $R$ -factors based on ALL data will be even larger.

*Fractional atomic coordinates and isotropic or equivalent isotropic displacement parameters ( $\text{\AA}^2$ )*

	<i>x</i>	<i>y</i>	<i>z</i>	$U_{\text{iso}}^*/U_{\text{eq}}$
Cl1	0.13301 (8)	0.6900 (2)	-0.03546 (7)	0.0599 (5)
O1	0.0342 (2)	0.8800 (5)	0.2237 (2)	0.0534 (11)
N1	0.2487 (2)	0.3588 (7)	0.0784 (2)	0.0372 (11)
C1	0.1808 (3)	0.5392 (8)	0.0749 (2)	0.0368 (14)
C2	0.1436 (3)	0.6216 (7)	0.1526 (3)	0.0340 (14)
C3	0.1835 (3)	0.4990 (8)	0.2376 (3)	0.0398 (16)
C4	0.2981 (3)	0.1674 (9)	0.3335 (3)	0.0475 (17)
C5	0.3681 (3)	-0.0242 (10)	0.3370 (3)	0.0551 (17)
C6	0.3985 (3)	-0.0855 (9)	0.2554 (3)	0.0538 (17)
C7	0.3611 (3)	0.0351 (9)	0.1686 (3)	0.0427 (17)
C8	0.2875 (3)	0.2323 (8)	0.1643 (3)	0.0365 (12)
C9	0.2566 (3)	0.3003 (8)	0.2465 (3)	0.0369 (14)
C10	0.0635 (3)	0.8293 (8)	0.1397 (3)	0.0436 (16)
C11	0.3954 (3)	-0.0328 (10)	0.0817 (3)	0.0589 (17)
H1O	0.00970	0.73400	0.23830	0.0800*
H3	0.16230	0.54700	0.29100	0.0480*
H4	0.27790	0.20970	0.38810	0.0570*
H5	0.39560	-0.11390	0.39410	0.0660*
H6	0.44670	-0.21540	0.26010	0.0640*
H10A	0.08110	1.01170	0.11630	0.0520*
H10B	0.01230	0.75250	0.09200	0.0520*
H11A	0.44600	-0.16520	0.09810	0.0880*
H11B	0.41540	0.14190	0.05710	0.0880*
H11C	0.34680	-0.11840	0.03440	0.0880*

*Atomic displacement parameters ( $\text{\AA}^2$ )*

	$U^{11}$	$U^{22}$	$U^{33}$	$U^{12}$	$U^{13}$	$U^{23}$
Cl1	0.0614 (8)	0.0749 (9)	0.0457 (7)	0.0113 (7)	0.0170 (6)	0.0132 (6)
O1	0.060 (2)	0.0369 (17)	0.078 (2)	0.0016 (16)	0.0457 (18)	-0.0011 (16)
N1	0.042 (2)	0.035 (2)	0.0375 (19)	-0.0031 (18)	0.0153 (17)	-0.0004 (17)
C1	0.044 (3)	0.031 (2)	0.037 (2)	-0.007 (2)	0.013 (2)	-0.0008 (19)

## supplementary materials

---

C2	0.040 (3)	0.028 (2)	0.037 (2)	-0.005 (2)	0.015 (2)	-0.003 (2)
C3	0.044 (3)	0.043 (3)	0.039 (2)	-0.009 (2)	0.023 (2)	-0.006 (2)
C4	0.051 (3)	0.052 (3)	0.042 (3)	-0.010 (3)	0.016 (2)	0.000 (2)
C5	0.053 (3)	0.063 (3)	0.047 (3)	-0.004 (3)	0.007 (2)	0.012 (2)
C6	0.038 (3)	0.051 (3)	0.071 (3)	-0.001 (2)	0.010 (3)	0.011 (3)
C7	0.037 (3)	0.044 (3)	0.048 (3)	-0.006 (2)	0.012 (2)	0.002 (2)
C8	0.037 (2)	0.036 (2)	0.038 (2)	-0.007 (2)	0.012 (2)	-0.002 (2)
C9	0.043 (3)	0.036 (2)	0.034 (2)	-0.007 (2)	0.014 (2)	-0.003 (2)
C10	0.046 (3)	0.038 (2)	0.053 (3)	-0.004 (2)	0.024 (2)	-0.002 (2)
C11	0.050 (3)	0.069 (3)	0.063 (3)	0.010 (3)	0.024 (2)	-0.006 (3)

### *Geometric parameters (Å, °)*

C11—C1	1.735 (3)	C7—C11	1.499 (6)
O1—C10	1.406 (5)	C7—C8	1.421 (6)
O1—H10	0.8200	C8—C9	1.409 (6)
N1—C8	1.373 (5)	C3—H3	0.9300
N1—C1	1.307 (5)	C4—H4	0.9300
C1—C2	1.419 (6)	C5—H5	0.9300
C2—C10	1.514 (6)	C6—H6	0.9300
C2—C3	1.359 (6)	C10—H10A	0.9700
C3—C9	1.412 (6)	C10—H10B	0.9700
C4—C9	1.408 (6)	C11—H11A	0.9600
C4—C5	1.365 (6)	C11—H11B	0.9600
C5—C6	1.391 (6)	C11—H11C	0.9600
C6—C7	1.368 (6)		
C10—O1—H10	110.00	O1—C10—C2	113.5 (3)
C1—N1—C8	117.8 (3)	C2—C3—H3	119.00
C11—C1—N1	116.2 (3)	C9—C3—H3	119.00
C11—C1—C2	117.9 (3)	C5—C4—H4	120.00
N1—C1—C2	126.0 (3)	C9—C4—H4	120.00
C1—C2—C3	115.7 (4)	C4—C5—H5	120.00
C1—C2—C10	121.3 (4)	C6—C5—H5	120.00
C3—C2—C10	122.9 (4)	C5—C6—H6	118.00
C2—C3—C9	121.4 (4)	C7—C6—H6	118.00
C5—C4—C9	119.4 (4)	O1—C10—H10A	109.00
C4—C5—C6	120.2 (4)	O1—C10—H10B	109.00
C5—C6—C7	123.4 (4)	C2—C10—H10A	109.00
C6—C7—C11	122.5 (4)	C2—C10—H10B	109.00
C8—C7—C11	120.9 (4)	H10A—C10—H10B	108.00
C6—C7—C8	116.6 (4)	C7—C11—H11A	109.00
N1—C8—C9	121.0 (4)	C7—C11—H11B	109.00
C7—C8—C9	120.8 (4)	C7—C11—H11C	109.00
N1—C8—C7	118.2 (4)	H11A—C11—H11B	109.00
C3—C9—C4	122.4 (4)	H11A—C11—H11C	109.00
C4—C9—C8	119.6 (4)	H11B—C11—H11C	110.00
C3—C9—C8	118.0 (4)		
C8—N1—C1—C11	-179.2 (3)	C9—C4—C5—C6	0.5 (7)
C8—N1—C1—C2	1.0 (6)	C5—C4—C9—C3	179.6 (4)

C1—N1—C8—C7	179.8 (4)	C5—C4—C9—C8	0.4 (6)
C1—N1—C8—C9	-1.5 (6)	C4—C5—C6—C7	-0.7 (7)
C11—C1—C2—C3	-179.7 (3)	C5—C6—C7—C8	0.0 (7)
C11—C1—C2—C10	1.3 (5)	C5—C6—C7—C11	179.6 (4)
N1—C1—C2—C3	0.1 (6)	C6—C7—C8—N1	179.6 (4)
N1—C1—C2—C10	-178.9 (4)	C6—C7—C8—C9	0.9 (6)
C1—C2—C3—C9	-0.7 (6)	C11—C7—C8—N1	0.0 (6)
C10—C2—C3—C9	178.3 (4)	C11—C7—C8—C9	-178.7 (4)
C1—C2—C10—O1	178.4 (3)	N1—C8—C9—C3	1.0 (6)
C3—C2—C10—O1	-0.6 (5)	N1—C8—C9—C4	-179.8 (4)
C2—C3—C9—C4	-179.1 (4)	C7—C8—C9—C3	179.7 (4)
C2—C3—C9—C8	0.1 (6)	C7—C8—C9—C4	-1.1 (6)

*Hydrogen-bond geometry* (Å, °)

Cg1 is a centroid of the N1/C1—C3/C8/C9 ring.

<i>D</i> —H $\cdots$ <i>A</i>	<i>D</i> —H	H $\cdots$ <i>A</i>	<i>D</i> $\cdots$ <i>A</i>	<i>D</i> —H $\cdots$ <i>A</i>
O1—H10 $\cdots$ O1 <sup>i</sup>	0.82	1.90	2.712 (4)	174
C10—H10A $\cdots$ Cg1 <sup>ii</sup>	0.97	2.75	3.557 (4)	141

Symmetry codes: (i)  $-x, y-1/2, -z+1/2$ ; (ii)  $x, y+1, z$ .

Fig. 1

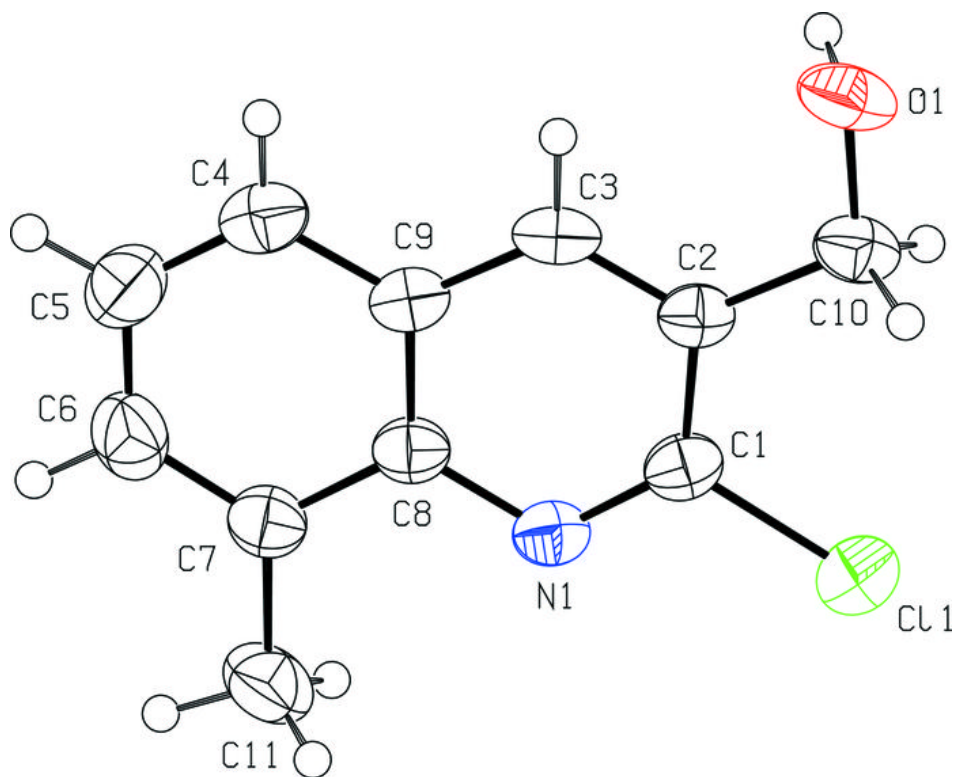
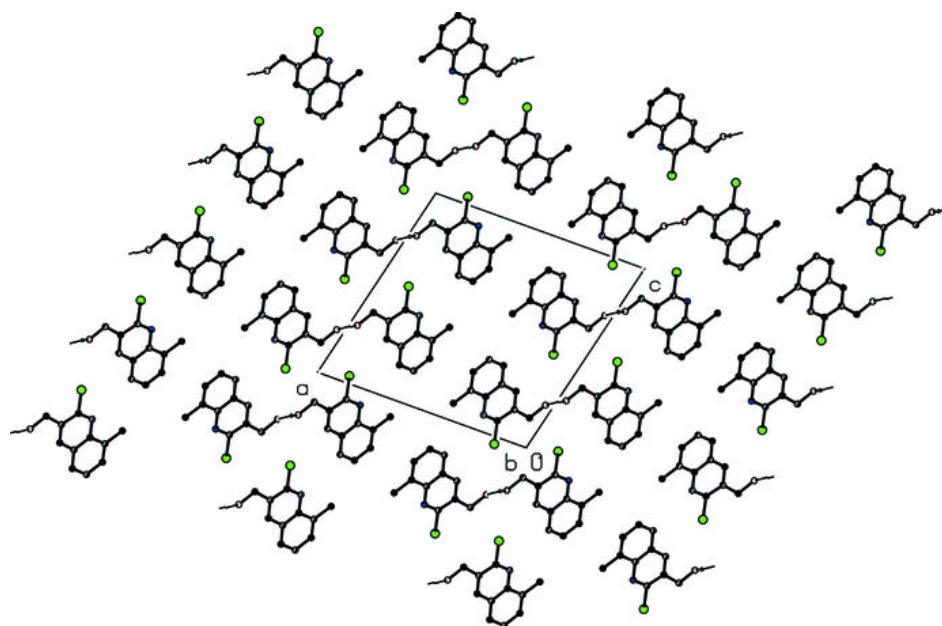




Fig. 2



Copyright of Acta Crystallographica: Section E (International Union of Crystallography - IUCr) is the property of International Union of Crystallography - IUCr and its content may not be copied or emailed to multiple sites or posted to a listserv without the copyright holder's express written permission. However, users may print, download, or email articles for individual use.