

CAD-Based Automatic Clash Analysis for Robotic Assembly

Bala Murali Gunji^{a*}, B. B. V. L. Deepak^b, Bijaya Kumar Khamari^c

Department of Industrial Design

National Institute of Technology, Rourkela, Pincode-769008, India

E-mails: ^abmgunji@gmail.com, ^bbbvl@nitrrkl.ac.in, ^cbijayaa.khamari@gmail.com

**Corresponding author*

Bibhuti Bhusan Biswal

Department of Mechanical Engineering

National Institute of Technology, Meghalaya, Pincode-793003, India

E-mail: bbbiswal@nitrrkl.ac.in

(Received November 16, 2018; Accepted January 28, 2019)

Abstract

Assembly operation occupies major stake in the manufacturing process to obtain the final product. In order to obtain an assembly sequence for a given product, the product should be free of clashes between the parts. To know the clash between the parts, many researchers are followed mathematical models to generate contact data information of the product. These methods will consume much time and search space to extract the information from the product. Current research focuses on developing an automatic algorithm to generate the clash analysis report using macros CATIA V5 R17. In this method, it will not only generate the clash analysis report but also generate a contact information matrix between the parts of the assembly. The developed methodology is implemented on various industrial products to extract the clash information of the product.

Keywords- Computer aided design (CAD), Clash analysis, Assembly sequence, Automation.

1. Introduction

In present days, many advanced processes in manufacturing have been developed to meet the demand for customer needs. Even though many advanced manufacturing processes are there, to obtain the final product assembly operation is required. As the assembly process occupies a major stake in the overall manufacturing process, an improper assembly may lead to an increase in the cost of the final product as well as time to obtain the final product (Deepak et al., 2018).

At the beginning stage of Assembly Sequence Planning (ASP) problem, mathematical models are applied to generate feasible sequences (Wilson and Latombe, 1994; Baishya, 2019). Initially, researchers are successful in achieving the feasible sequences using contact information of the product. Moreover, they generate the clash data between the parts by mathematically, which is a time-consuming and tedious process.

By the development of Artificial Intelligence (AI) techniques, researchers are interested in applying AI techniques for solving ASP problem. These AI techniques are developed by the behavior of animals & birds present in nature. Apart from these nature-inspired algorithms, based on human genetics & neural networks the algorithms like Genetic Algorithm (GA) and Artificial Neural Networks (ANN) have developed (Bonnevillie et al., 1995; Chen and Liu, 2001; Sahoo, 2017; Bhunia et al., 2017). As GA algorithm is having different types of tuning parameters like crossover, mutation, cut and paste beak and join and many more, where enhanced of the

algorithm is possible to increase the solution accuracy. Apart from advantages, there are some difficulties faced in GA, i.e., high dependence on the chromosomes and the offspring generated in GA has many chances, which lead to an infeasible solution for ASP problem.

After GA, the most applied algorithm for solving ASP problem is Ant Colony Optimization (ACO) algorithm because of its positive feedback given by the different ants (Failli and Dini, 2000; Wang et al., 2005; McGovern and Gupta, 2006). On the other side, the algorithms like Particle Swarm Intelligence (PSO) (Wang and Liu, 2010), Simulated Annealing (SA) (Turgay, 2018), Artificial Neural Network (ANN) (Joshi, 2016), Teaching Learning Based Optimization (TLBO) algorithm and many more are developed to solve the ASP problem (Gunji et al., 2018).

To increase the rate of obtaining the global solution especially for the larger part number assemblies, Hybrid Algorithms (HA) are developed. The main aim to develop HA is to overcome the drawbacks of individual algorithms while solving ASP problems (Murali et al., 2017; Gunji et al., 2017).

Even though there exist several methods to solve the ASP problem, most of the methods use mathematical models to extract clash information as well as contact information among the parts of the product. However, these methods are a time-consuming and difficult process to extract the assembly predicates information. Moreover, the methods used to extract clash information between the parts only provides information about the clash, and they do not provide any data about the contact of the parts and clearance among the parts.

By considering the above limitations, in this research article, a CAD-based automatic algorithm has proposed to extract clash analysis report between the parts along with the Contact Information Matrix (CIM).

In the current research paper, different sections are as follows: section-1 deals the introduction to ASP problem and different methodologies/algorithms followed by researchers to extract contact information of the product. Section-2 deals with proposed clash analysis algorithm to extract the clash information of the product. Section -3 deals with results extraction for the different industrial product (block and pulley assembly) using the developed algorithm. Section -4 summarize the work carried out in the paper.

2. Clash Analysis Algorithm

A CAD-based automatic method is developed to generate a clash analysis report in the excel sheet stating which parts are in contact and which parts are in a clash along with the value of clash.

The detailed flow chart of the proposed method for clash analysis represents in Figure 1. In the proposed methodology, initially an active CAD environment (CATIA V5 R17) is considered, and the 3D design of the particular assembly to which clash report along with the CIM has to be generated should be open in the active CAD environment. By using CIM, contact matrix is generated to obtain the feasible sequences for the considered assembly.

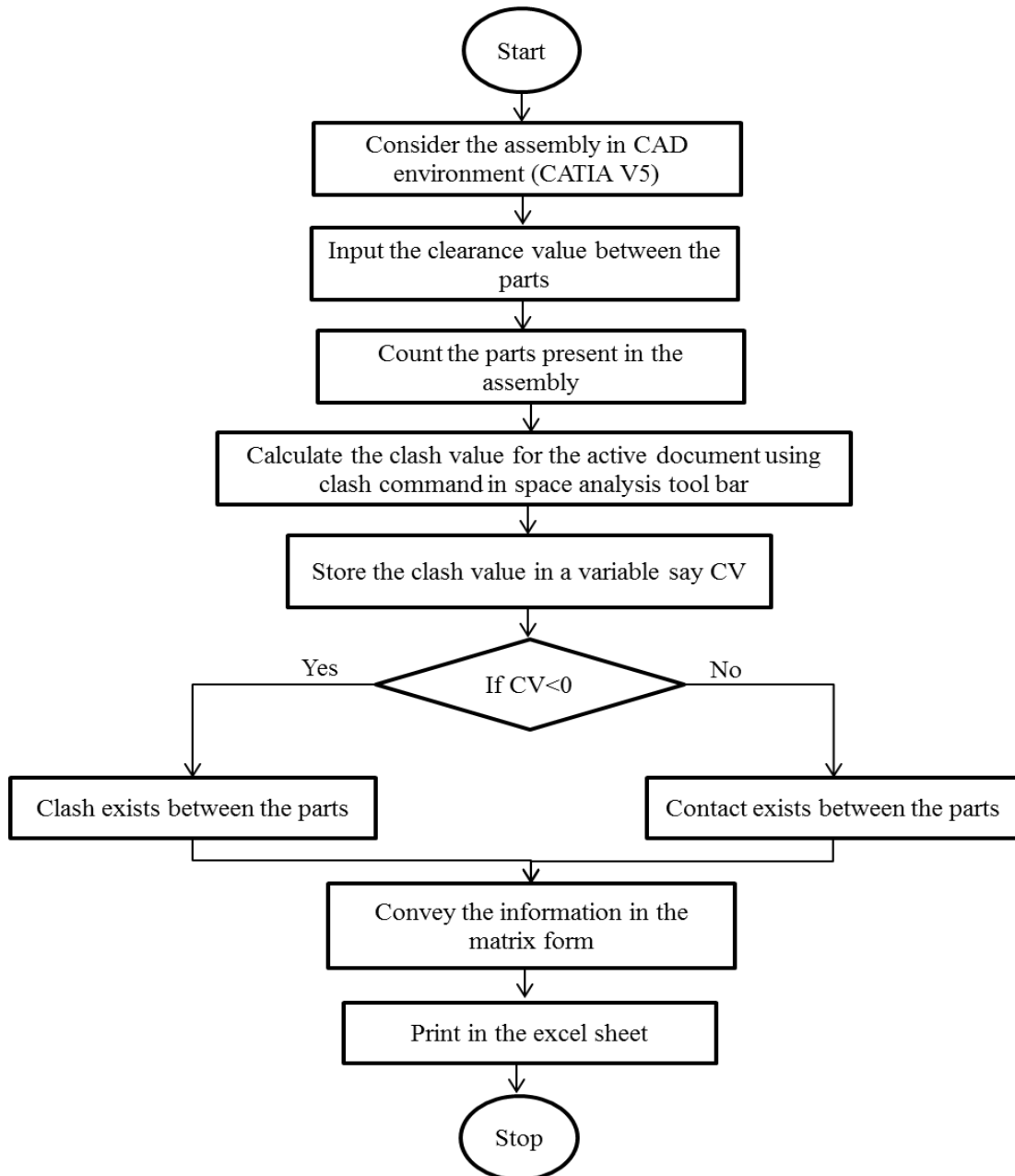


Figure 1. Represents the detailed flowchart of automatic clash analysis Algorithm

The code, which is developed using macros, should be to run. Based on the clash value calculated from the clash toolbar in the assembly module, the type of connection is decided between the parts. Generally, there are three types of connection one is a clash, the second one is contact, and the third one is clearance between the parts.

If the clash value is '0', the parts are in contact. If the clash value is less than '0', the pair of parts is in interference. If the clash value is greater than zero and in between the clearance value, the pair of parts is in clearance. Moreover, by the developed methodology, CIM can be extracted automatically for the given assembly, which is used as liaison data to check the feasibility of the sequence. The developed methodology is applied to a 4-part block assembly as well as 22-part pulley assembly to check the performance of the methodology.

2.1. Clash Data Extraction Code

Step-1: Import CAD product in the active window of the CATIA assembly module.

Step-2: Compute total numbers of parts in the assembly say "m"

Step-3: Assign a null matrix of order " $m \times m$ ".

Step-4: Compute Clash Value (CV) between the parts using clash compute command

Step-5: Assign the total number of CV to " n ".

Step-6: For CV to n

 If CV < 0

Consider clash between the parts (say i, j) and assign "negative value" at that position in null matrix

 Stop

 Else

 If CV=0

Consider contact between the parts (say i, j) and assign value "1" at that position in null matrix

 Stop

 Else

 If CV ≤ clearance value & CV > 0

Consider clearance between the parts (say i, j) and assign "positive value" at that position in the null matrix

 Else

Consider no contact between the parts (say i, j) and assign value "0" at that position in the null matrix

 End

Step-7: Export the matrix data to excel sheet.

2.2. Block Assembly to Explain Clash Analysis

In this section, a four-part block assembly is considered shown in Figure 2. From the figure, it clearly understands that which part is in a clash with which part. However, as it is a lesser number part assembly, we can identify the clash between the parts easily. Moreover, we cannot identify how much interference exists between the parts and also contact details of the parts.

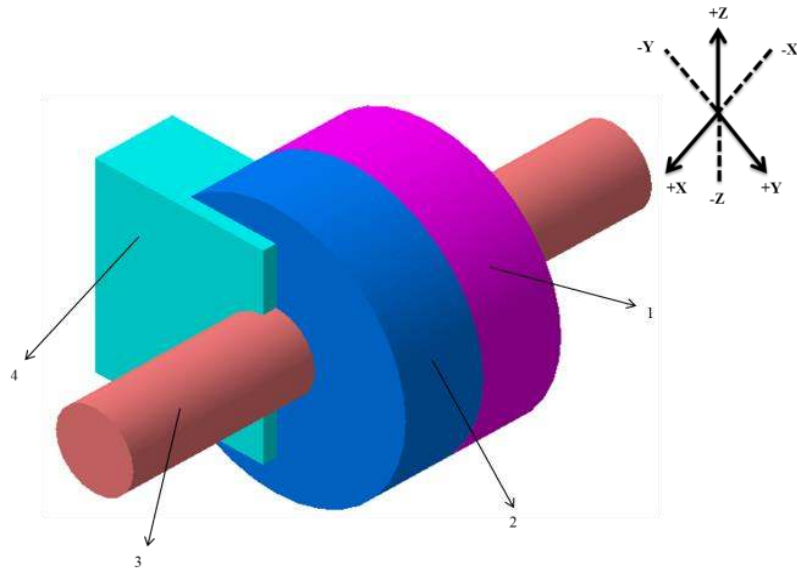
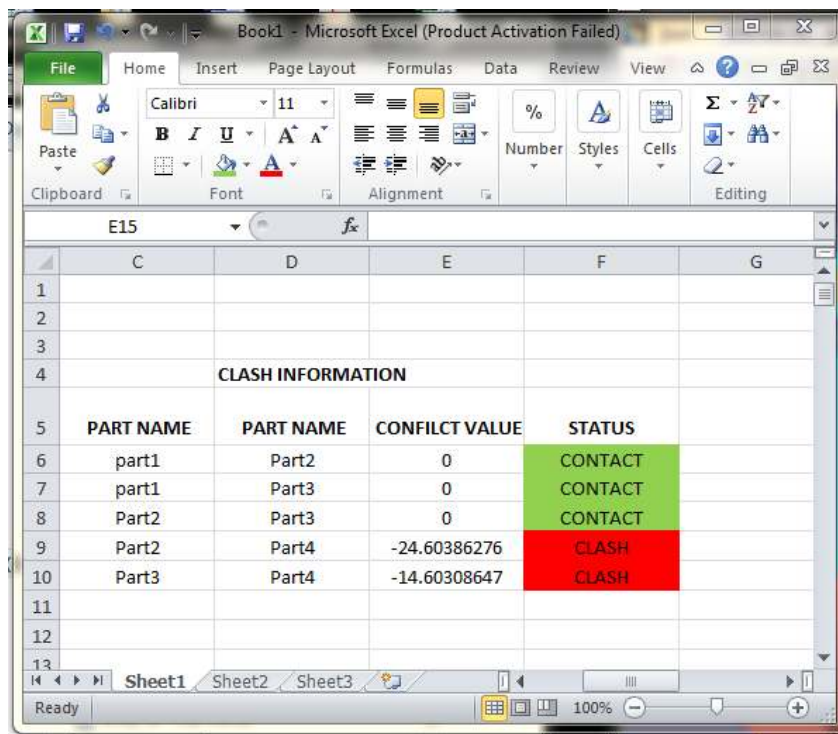


Figure 2. Represents the block assembly for the clash analysis

By the developed methodology we can identify which part is in contact with which part and its value along with the part name. The detailed data about the clash and contact among the parts of the product with the values are extracted to the excel sheet.



CLASH INFORMATION				
	PART NAME	PART NAME	CONFILCT VALUE	STATUS
6	part1	Part2	0	CONTACT
7	part1	Part3	0	CONTACT
8	Part2	Part3	0	CONTACT
9	Part2	Part4	-24.60386276	CLASH
10	Part3	Part4	-14.60308647	CLASH

Figure 3. Represents the clash information of block assembly

Figure 3 represents the clash information of the block assembly in an excel sheet. In the excel sheet, it is mentioned that the status of pair parts in different colors. ‘Contact’ status is highlighted with green color, and the ‘Clash status is highlighted with red color. In the excel sheet, a negative value is displayed at the clash status, this is due to that much portion of the part is pierced into another part

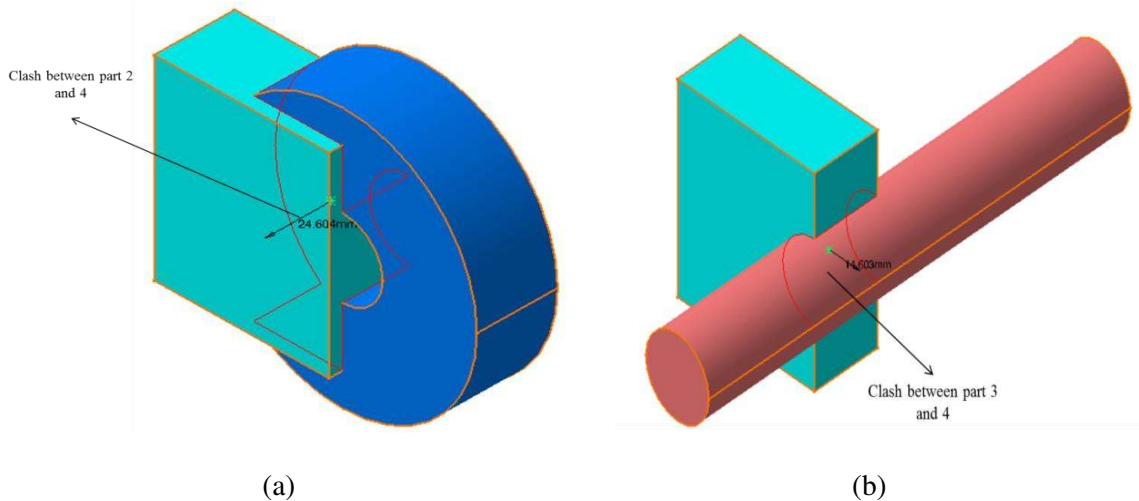


Figure 4. Pair of parts that are in a clash

Figure 4 embodies the pair of parts that are having a clash in the block assembly. The results of clash analysis for the block assembly are extracted within the time of ‘2.02sec’ using CATIA V5 R17 software. The Central Processing Unit (CPU) configuration considered is RAM-2GB; Processor: I3.

2.3. Contact Information Matrix (CIM)

In this section, a contact information matrix has been extracted with the data in the excel sheet. A matrix is formulated stating the status of the parts in the assembly whether the parts are in contact or no contact or clash.

Contact Information Matrix

$$\begin{matrix}
 & \begin{matrix} 1 & 2 & 3 & 4 \end{matrix} \\
 \begin{matrix} 1 \\ 2 \\ 3 \\ 4 \end{matrix} & \begin{bmatrix} 0 & 1 & 1 & 0 \\ 1 & 0 & 1 & -24.604 \\ 1 & 1 & 0 & -14.603 \\ 0 & -24.604 & -14.603 & 0 \end{bmatrix}
 \end{matrix}$$

This matrix provides the contact information of the parts in the product. In the matrix ‘0’ indicates no contact among the parts, ‘1’ indicates contact among the parts and the negative value embodies the clash between the parts.

3.Results and Discussions

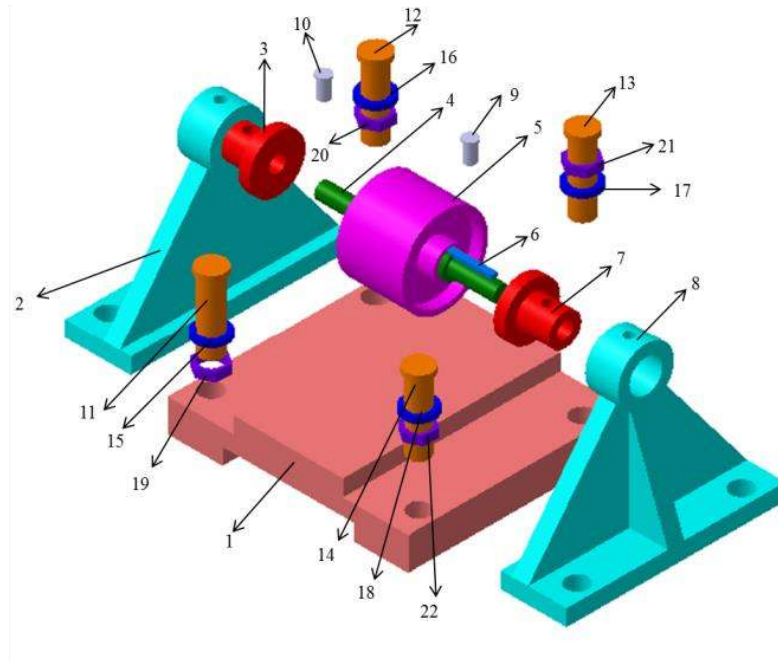


Figure 5. Represents the pulley assembly for clash analysis

CLASH INFORMATION			
PART NAME	PART NAME	CONFLICT VALUE	STATUS
pulley base	side support2.1	0	CONTACT
pulley base	side support1	0	CONTACT
pulley base	connector1	-25.44321632	CLASH
pulley base	connector2	-25.44321632	CLASH
pulley base	connector3	-25.44321632	CLASH
pulley base	connector4	-25.44321632	CLASH
pulley base	washer2	0	CONTACT
pulley base	washer1	0	CONTACT
pulley base	washer4	0	CONTACT
pulley base	washer3	0	CONTACT
side support2.1	stud.1	0	CONTACT
side support2.1	connector pin.1	0	CONTACT
side support2.1	connector1	-14.60308647	CLASH
side support2.1	connector2	-14.60308647	CLASH
stud.1	flywheel support	0	CONTACT
stud.1	connector pin.1	0	CONTACT
flywheel support	flywheel	0	CONTACT
flywheel support	connector	0	CONTACT

(a)

PART NAME	PART NAME	CONFLICT VALUE	STATUS
flywheel support	stud.2	0	CONTACT
flywheel support	connector pin	0	CONTACT
flywheel support	connector pin.1	0	CONTACT
flywheel	connector	0	CONTACT
stud.2	side support1	0	CONTACT
stud.2	connector pin	0	CONTACT
side support1	connector pin	0	CONTACT
side support1	connector3	-14.60308647	CLASH
side support1	connector4	-14.60308647	CLASH
connector1	washer2	-19.6484378	CLASH
connector1	fit2	-14.60308647	CLASH
connector2	washer1	-19.6484378	CLASH
connector2	fit3	-14.60308647	CLASH
connector3	washer4	-19.6484378	CLASH
connector3	fit4	-14.60308647	CLASH
connector4	washer3	-19.6484378	CLASH
connector4	fit1	-14.60308647	CLASH
washer2	fit2	0	CONTACT

(b)

Figure 6. (a) and (b) represent the clash information of pulley assembly

PART NAME	PART NAME	CONFLICT VALUE	STATUS
washer1	fit3	0	CONTACT
washer4	fit4	0	CONTACT
washer3	fit1	0	CONTACT

Figure 7. Represents the clash information of pulley assembly

In this section, a 22-part pulley assembly shown in Figure 5 is considered to test the performance of the developed methodology. In this, as the assembly is too large and has many parts, identifying the status of the parts manually or by the mathematical model is difficult and time-consuming. The same configuration system is considered to run the method, and it takes ‘7.43sec’ to extract the clash information for the considered assembly in the excel sheet.

Figure 6, (a), (b) and Figure 7 represent different images of the clash analysis report in the excel sheet. Total ‘39’ pair part combinations are extracted with their conflict value along with the part name in the excel sheet.

3.1. Contact Information Matrix (CIM)

In this section, a contact information matrix has been extracted with the data in the excel sheet. A matrix is formulated stating the status of the parts in the assembly whether the parts are in contact or no contact or clash.

This matrix provides the connection information of the parts in the product. In this matrix ‘0’ indicates no contact among the parts, ‘1’ indicates contact among the parts, ‘negative value’ represents the clash among the parts and ‘positive value’ indicates clearance among the parts.

Contact Information Matrix

1	1	2	3	4	5	6	7	8	9	10	11	12	13	14	15	16	17	18	19	20	21	22
1	0	1	0	0	0	0	0	1	0	0	-25.43	-25.43	-25.43	-25.43	1	1	1	1	0	0	0	0
2	1	0	1	0	0	0	0	0	0	1	-14.6	-14.6	0	0	0	0	0	0	0	0	0	0
3	0	1	0	1	0	0	0	0	0	1	0	0	0	0	0	0	0	0	0	0	0	0
4	0	0	1	0	1	1	1	0	0.84	0.84	0	0	0	0	0	0	0	0	0	0	0	0
5	0	0	0	1	0	1	0	0	0	0	0	0	0	0	0	0	0	0	0	0	0	0
6	0	0	0	1	1	0	0	0	0	0	0	0	0	0	0	0	0	0	0	0	0	0
7	0	0	0	1	0	0	0	1	1	0	0	0	0	0	0	0	0	0	0	0	0	0
8	1	0	0	0	0	0	1	0	1	0	0	0	-14.6	-14.6	0	0	0	0	0	0	0	0
9	0	0	0	0.84	0	0	1	1	0	0	0	0	0	0	0	0	0	0	0	0	0	0
10	0	1	1	0.84	0	0	0	0	0	0	0	0	0	0	0	0	0	0	0	0	0	0
11	-25.43	-14.6	0	0	0	0	0	0	0	0	0	0	0	0	-19.64	0	0	0	-14.6	0	0	0
12	-25.43	-14.6	0	0	0	0	0	0	0	0	0	0	0	0	0	-19.64	0	0	0	0	0	-14.6
13	-25.43	0	0	0	0	0	0	-14.6	0	0	0	0	0	0	0	0	-19.64	0	0	0	0	-14.6
14	-25.43	0	0	0	0	0	0	-14.6	0	0	0	0	0	0	0	0	0	0	0	0	0	0
15	1	0	0	0	0	0	0	0	0	0	-19.64	0	0	0	0	0	0	0	1	0	0	0
16	1	0	0	0	0	0	0	0	0	0	0	19.64	0	0	0	0	0	0	0	1	0	0
17	1	0	0	0	0	0	0	0	0	0	0	0	-19.64	0	0	0	0	0	0	0	0	1
18	1	0	0	0	0	0	0	0	0	0	0	0	0	0	0	0	0	0	0	0	0	1
19	0	0	0	0	0	0	0	0	0	0	-14.6	0	0	0	1	0	0	0	0	0	0	0
20	0	0	0	0	0	0	0	0	0	0	0	0	0	0	0	1	0	0	0	0	0	0
21	0	0	0	0	0	0	0	0	0	0	0	-14.6	0	0	0	0	1	0	0	0	0	0
22	0	0	0	0	0	0	0	0	0	0	0	0	-14.6	0	0	0	0	1	0	0	0	0

4. Conclusion

In this paper, an automated method is proposed to extract the clash information between the parts for the given assembly. Moreover, along with the clash information a contact information matrix is also extracted based on the clash data to generate the feasible sequences for an ASP problem.

In this paper, two different assemblies namely block assembly with four parts, and pulley assembly with twenty-two parts has been considered to test the performance of the developed methodology. The developed methodology is performed on a system with RAM 2GB and processor: I3. The performance of the methodology is quite impressive and takes less time for extracting the required information from the assembly.

As a future scope, the developed methodology is tested for different large number part assemblies, and moreover, this methodology can be made an integral part of the ASP problem methods to extract CIM for generating the feasible sequences to reduce the time to obtain the optimal assembly sequence.

Conflict of Interest

The authors confirm that there is no conflict of interest to publish the paper in the journal.

Acknowledgment

This research article is not possible without the support of the Department of Industrial Design and the Product Development Laboratory. We would also like to thank the institute NIT Rourkela, Odisha, India-769008 that supported us to carry out the research work.

References

- Baishya, C. (2019). A new application of Hermite collocation method. *International Journal of Mathematical, Engineering and Management Sciences*, 4(1), 182-190.
- Bhunia, A. K., Duary, A., & Sahoo, L. (2017). A genetic algorithm based hybrid approach for reliability-redundancy optimization problem of a series system with multiple-choice. *International Journal of Mathematical, Engineering and Management Sciences*, 2(3), 185-212.
- Bonneville, F., Perrard, C., & Henrioud, J. M. (1995, October). A genetic algorithm to generate and evaluate assembly plans. In *Emerging Technologies and Factory Automation, 1995. ETFA'95, Proceedings, 1995 INRIA/IEEE Symposium on* (Vol. 2, pp. 231-239). IEEE.
- Chen, S. F., & Liu, Y. J. (2001). The application of multi-level genetic algorithms in assembly planning. *Journal of Industrial Technology*, 17(4), 1-9.
- Deepak, B. B. V. L., Bala Murali, G., Bahubalendruni, M. V. A. R., & Biswal, B. B. (2018). Assembly sequence planning using soft computing methods: a review. *Proceedings of the Institution of Mechanical Engineers, Part E: Journal of Process Mechanical Engineering*, 1–31, DOI: 10.1177/0954408918764459.
- Failli, F., & Dini, G. (2000, June). Ant colony systems in assembly planning: a new approach to sequence detection and optimization. In *2nd CIRP International Seminar on Intelligent Computation in Manufacturing Engineering-ICME*, 227-232.

- Gunji, A. B., Deepak, B. B. B. V. L., Bahubalendruni, C. M. V. A. R., & Biswal, D. B. B. (2018). An optimal robotic assembly sequence planning by assembly subsets detection method using teaching learning-based optimization algorithm. *IEEE Transactions on Automation Science and Engineering*, 15(3), 1369-1385.
- Gunji, B., Deepak, B. B. V. L., Bahubalendruni, M. V. A. R., & Biswal, B. B. (2017). Hybridized genetic-immune based strategy to obtain optimal feasible assembly sequences. *International Journal of Industrial Engineering Computations*, 8(3), 333-346.
- Joshi, R. (2016). Artificial neural network (ANN) based empirical interpolation of precipitation. *International Journal of Mathematical, Engineering and Management Sciences*, 1(3), 93–106.
- McGovern, S. M., & Gupta, S. M. (2006). Ant colony optimization for disassembly sequencing with multiple objectives. *The International Journal of Advanced Manufacturing Technology*, 30(5-6), 481-496.
- Murali, G. B., Deepak, B. B. V. L., Bahubalendruni, M. V. A. R., & Biswal, B. B. (2017). Optimal assembly sequence planning using hybridized immune-simulated annealing technique. *Materials Today: Proceedings*, 4(8), 8313-8322.
- Sahoo, L. (2017). Genetic algorithm based approach for reliability redundancy allocation problems in fuzzy environment. *International Journal of Mathematical, Engineering and Management Sciences*, 2(4), 259–272.
- Turgay, S. (2018). Multi objective simulated annealing approach for facility layout design. *International Journal of Mathematical, Engineering and Management Sciences*, 3(4), 365–380.
- Wang, J. F., Liu, J. H., & Zhong, Y. F. (2005). A novel ant colony algorithm for assembly sequence planning. *The International Journal of Advanced Manufacturing Technology*, 25(11-12), 1137-1143.
- Wang, Y., & Liu, J. H. (2010). Chaotic particle swarm optimization for assembly sequence planning. *Robotics and Computer-Integrated Manufacturing*, 26(2), 212-222.
- Wilson, R. H., & Latombe, J. C. (1994). Geometric reasoning about mechanical assembly. *Artificial Intelligence*, 71(2), 371-396.

