

A Review on Ontology Based Document and Image Retrieval Methods

V. Vijayarajan^{1*} and M. Dinakaran²

¹School of Computing Science and Engineering, Vellore Institute of Technology (VIT), Vellore – 632014, Tamil Nadu, India; vijayarajan.v@vit.ac.in

²School of Information Technology and Engineering, Vellore Institute of Technology (VIT), Vellore – 632014, Tamil Nadu, India; mdinakaran@vit.ac.in

Abstract

Objectives: The objective of this critical review is to narrate various approaches that are commonly used in information retrieval which includes documents and images. **Methods/Statistical analysis:** In early stages for document retrieval, keyword indexing to keyword linking methods has been adapted. These approaches suffered without high-level semantics. Also, this review discusses image retrieval starting from key-word based to ontology based. From literature, it is found that the Content Based Image Retrieval (CBIR) is suffering from semantic gap. The semantic gap is the difference between the human understanding of images and machine interpretation of images. **Findings:** This work introduces a new method of showing retrieval results in Search Engine results using Object-Attribute-Value (O-A-V) and recommends that it can be applied for document retrieval. Also, an ontology applied image retrieval method is demonstrated to show how ontology is applied to reduce the semantic gap. **Application:** This review concludes that the ontology applied in information retrieval reduces the semantic gap by adding high-level meaning which improves the presentation of the retrieval systems. This report will help as a roadmap for future researchers in this area.

Keywords: Document Retrieval, Image Retrieval, Ontology, Ontology Based Semantic Image Retrieval, Semantic Gap

1. Introduction

Web is a collection of huge data. Using search engine, the information is retrieved from web pages. Search engines arrange the retrieval results using various ranking algorithms. There are two type of searching techniques which are based on content or based on statistical searching techniques. Unless opening each web page separately, the user cannot realize the content inside to it. By taking this measure as the key point, we have created an ontology-based O-A-V information extraction web model. This model will help the users to rephrase their keywords in their query on their next attempts.

Almost the image data in web are all in digital form. There has been a substantial boost in internet usage which allows access to images from remote places. The thirst for retrieving interested images from big dataset is a challenging problem. Most of the times, the retrieval

may contain unwanted images due to the gaps studied in the literature. Many people started working with keyword based image retrieval, but in retrieval it resulted in a lot of spurious images with an understanding that a few words are not sufficient to describe an image completely.

The image feature extraction process analyzes each pixel in the image to extract the possible features in that pixel. If the similar process is repeated for the all image pixels, it is called global feature extraction. This process will increase the feature vector size also. Sometimes it is more than enough to retrieve salient features in the parts of an image called local features that can represent the entire image. Once the feature descriptor or feature vector is formed, they will help in similarity matching of retrieval process. The basic CBIR image retrieval system works in the following manner.

The feature extraction step is common for a query image as well as to the database images. The feature vector

* Author for correspondence

can be used for indexing and that can also be stored in the database. So, each time there is no need to extract the features for database images. The similarity is computed between query as well as the database images. Then the resulting distance measure was sorted to produce the rank of images in image retrieval. In this process by incorporating ontology can reduce the “semantic gap” of user understanding of images and system computation of image semantics.

2. Ontology Based Retrieval Methods Related to Document Retrieval

The first ontology based knowledge discovery in World Wide Web was developed by² which was suffering from high-level semantic features. A step towards to build a semantic web browser was created by³ which used the old retrieval techniques and lacking with lot of semantic features. The question answering system called AquaLog⁴ was developed but it can't capture the whole semantic of user minds. The perfect benchmark for text retrieval was developed with the name Text Retrieval Conference (TREC)⁵ and still it continues as one of the best benchmarking systems for text and document retrieval applications. The TREC gives better results but annotation

is tedious. The document retrieval system called Dbpedia⁶ which extract information from Wikipedia and organizes and serve using ontology. The major drawback is all about the trust worthy of contents in Wikipedia.

The dissertation⁷ used the concept of combining keywords into SPARQL using knowledge bases but it fails to build Resource Description Framework (RDF) automatically and could not be directly applied to semantic web retrieval. There is an intelligent generation of SPARQL queries found in Bio-Semantic framework⁸, but it is specific only to bio-informatics applications. An image prediction model based on relevance⁹ using the query context was built using the retrieval technique called bag-of-object is found in. But, it didn't make an attempt of filling the semantic gap of user intention with system computations. The ontology based knowledge graph¹⁰ in is an enriched semantic search technique. It uses probabilistic modelling framework, linking and representing the facts. Also, it created an atmosphere of a compulsion to go to the links suggested. The similar concept is again improved by¹¹ which organizes information with well-structured entity relationships. But it is developed for Chinese language. A semantic based document retrieval system¹² was developed using enhanced ontology based approach. The attempt made was with only text and it has not guaranteed to use it in image retrieval applications. The comparison of this review is summarized in Table 1.

Table 1. Summary of ontology based document retrieval methods

S. No.	Topics / Concepts	Published Authors	Pros	Cons	Year
1	Google and Knowledge Graph	¹⁰	Probabilistic modelling framework, linking and representing facts	Feel like a compulsion to go to the links suggested	2013
2	MagPie	³	A step towards to build a semantic web browser	Old retrieval system and lacking with lot of semantic features	2003
3	Dbpedia	⁶	Extract information from Wikipedia and organizes	Can't trust all information in Wikipedia	2009
4	BioSemantic Framework	⁸	Clever generation of SPARQL queries for semantics	But applicable only to bio-informatics	2013
5	Dc Proposal	⁷	Keywords to SPARQL using knowledge bases	Not automatically building RDFs	2011
6	AquaLog	⁴	Question-answering system	Can't capture the whole semantics	2005
7	Query Context Bag-of-object Retrieval	⁹	Image relevance prediction model using query context	Did not attempt to reduce semantic gap	2014
8	TREC	⁵	A perfect benchmark for text retrieval applications	Manual TREC results best results, but annotation is tedious	2000
9	Lucene	²	Ontology based knowledge discovery in world wide web	Old system, high-level semantics not attempted	1996
10	A semantic based retrieval system	¹²	Semantically enhanced, ontology based approach for information retrieval	Not attempted for image retrieval	2011

The amount of information has increased exponentially on the web over the past years. Always the best web result will be retrieved by the Search Engines but it will not give any knowledge to select the most suitable result. Web Browser just renders the web page with no understanding of the content. With the increasing amount of data and unwillingness of the users to go through the entire list of results, we need an enhanced search method to represent it in a better way so that the users will get the idea of inner contents in the web results. A comparative analysis of data mining used data retrieval and dynamic decision quadtree used data retrieval is found in literature. An information retrieval in speech recognition using neural net is also found in literature.

2.1 Extraction of O-A-V (Object-Attribute-Value) using Ontology Which is Applied in Search Engine Retrieval Result

An ontology applied O-A-V extraction is found in¹³. The proposed architecture of O-A-V based method is shown in Figure 1. **Algorithms for Developing Ontology**

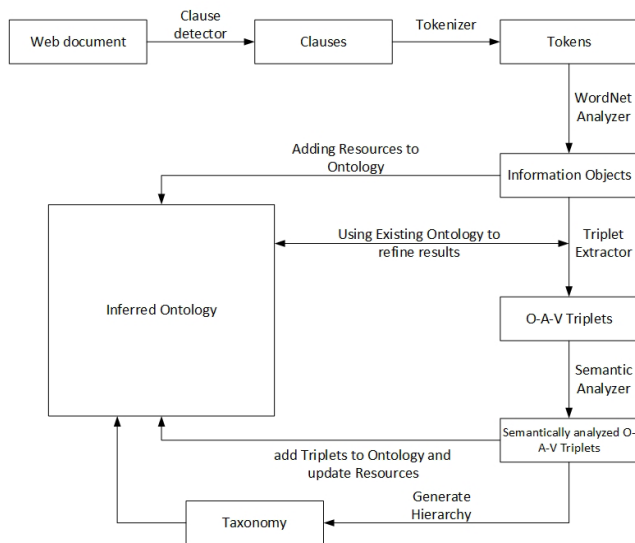


Figure 1. Architecture of O-A-V extraction.

Algorithm 1: Ontology development from the content of web

Data: ontology, web document
Result: ontology conceptualization excerpt clauses;
repeat

attain NP and the VP by analyzing the clause;
 attain the obtain the pasttaking place V from the group of VP;
 attain complex entities from the list of NP andVP;
 generate triplets of O-A-V using objects and subjects;
 examine the attained O-A-V semantically;
 progresstaxonomy by adding individuals and triplets in the created semantic network;
until any clauses left

Algorithm 2: Attaining complex entities from the list of noun phrases (NP)

Data: noun phrase
Result: complex entities, triplets in the form of O-A-V
Repeat
if $N \notin \text{next token}$ *then*
 Generate the individual using current token in the ontology;
else
 generate triplets in the form of O-A-V using the current and next token with V as a group;
 with the V value, modify the current token;
 using A class value, establish the V class;
end
Until the NP is available

Algorithm 3: Examining direct relations with semantic

Data: triplets in the form of O-A-V
Result: semantically examined triplets of O-A-V
if $\text{Ontology} \in O$ and $\text{class of } V \notin O$ *then*
 V characterizes a property or a representation of O rather than him;
else
 establish O class with the V class value;
end

Algorithm 4: Taxonomy development

Data: class of individuals which are unordered
Result: classification called taxonomy
repeat
 for each individual, excerpt hypernyms;
 sort the individuals based on their hierarchical appearance;

- move up in the hierarchies if common ancestors are found;
- if there is communal classes with common ancestors then add individuals to it;
- eliminate that individuals and increase the ancestor as alternative individual in the set;
- until there are no individuals found*

2.2 Search Engine with Light-Weight Ontology

A light-weight ontology based search engine which was built using this proposed method is shown in Figure 2.

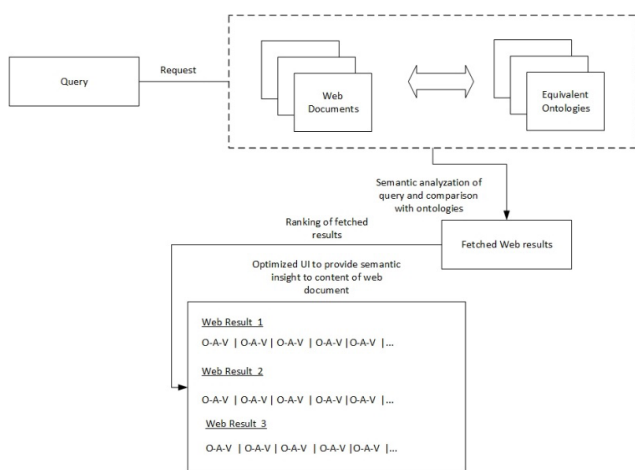


Figure 2. O-A-V based search engine using light-weight ontology.

This model represents retrieval contents in a semantic way. It assists the user in retrieval content search. We can extend this model to organize the retrieval contents into various classes / topics within web browsers itself. Users can save time by viewing only the required topics rather going for unnecessary topics.

3. Ontology Based Image Retrieval Methods

The image retrieval based on keywords related techniques found in^{14,15,16} used texts, field and structure based methods, but keywords are not enough to capture the

complete semantics. The retrieval methods using low level color features identical as color similarity and color coherence vectors were found in^{17,18}. The other retrieval works using low level texture features identical as texture descriptors and Wavelet based CBIR techniques are found in^{19,20}. The shape based retrieval method found in²¹ using template matching technique was only trust on shape features. Even though, it is obvious that a single low-level feature can't capture the full semantic of an image and hence the related image retrieval methods were suffering from semantic gap. The Scale Invariant Feature Transform (SIFT) feature found in²² was used to predict the amino acid changes in protein structure. But, in²³ work concluded the necessity of discovering better image feature which is faster in computations. The novel scale and rotation invariant feature descriptor was proposed by²⁴ called Speeded Up Robust Features (SURF), which is used in CBIR visual attention model²⁵. However, the SURF feature invention was not intended to fill the semantic gap. The fantastic survey on CBIR with high-level semantics¹ addressed all issues in image retrieval techniques. Another ontology based cognitive vision method²⁶ was proved using ontology used only limited visual features. The comparison of this review is summarized in Table 2.

In conservative image retrieval systems, the indexing and retrieval is done based on the keywords. The key words can't mean better than the content of an image mean. The text descriptions are used to define the image content in the text based an image retrieval technique which often creates ambiguity and inadequacy in query processing and performing an image database search. The process of assigning meta data with captions or keywords to a digital image is known as automatic image annotation or automatic image tagging. Retrieval based on texts is lexically motivated than conceptually motivated and hence it leads to unrelated results in data retrieval. Lexically motivated information retrieval means that text based retrieval operates on the word level but not on the meaning of words. But the very basic idea of ontology's is that they are conceptually motivated. That means it can be applied to specify the actual meaning of things and not like words as textual strings. The evaluations of image retrieval based on are shown in Table 3.

Table 2. Summary of ontology based image retrieval methods

S. No.	Topics / Concepts	Published Authors	Pros	Cons	Year
11	Keyword based image retrieval (text-based, field based, structure based)	¹⁴	Uses separate keywords;	Can't describe an image completely and semantically	1977
		¹³	Use one or more image attributes;		2009
		¹⁴	Keywords describing image information		2001
12	Low-level feature: Color (histogram and moments, dominant color, color cluster etc.)	¹⁵	Color similarity based retrieval;	Color alone can't	2003
		¹⁶	Color coherence vector based retrieval	describe the full image content	2014
13	Low-level feature: Shape (Fourier transform, curvature scale, template matching etc.)	¹⁷	Template matching method	Shape alone can't describe the full image content	2014
14	Low-level feature: Texture (wavelet transform, edge statistics, Gabor filters, statistical based etc.)	¹⁸	Color and texture descriptors;	Color and texture alone can't describe the full image content	2001
		¹⁹	Wavelet based CBIR technique		2014
15	Scale Invariant Feature Transform: SIFT	²⁰	Predicting amino acid changes in	Biology application;	2003
		²¹	Protein structure; Features for image retrieval	Concluded to find better descriptor	2008
16	Speeded up Robust Feature: SURF	²²	Novel scale and rotation invariant	-	2008
		²³	feature description;	Not completely indent-ed to attempt semantic gap filling	2015
			CBIR – visual attention model		
17	Ontology based image retrieval methods	²⁴	Survey: CBIR with high-level semantics	-	2007
		²⁵	Ontology based cognitive vision	Basic ontology with limited visual features	2004

Table 3. Comparison within keyword based image retrieval

Sl. No	Text based image retrieval	Field based image retrieval	Structure based image retrieval
1.	Texts are annotated to describe the image content	One or more fields (image attributes) are annotated to describe the image content	Complex descriptions involving relations are used to describe the image object contents
2.	Lexically motivated retrieval	Lexically motivated retrieval	Conceptually motivated retrieval
3.	Keywords- texts	Keywords- one or more fields	Keywords- sentences having conceptual meanings

3.1 Content-Based Image Retrieval

The basic of CBIR system works as shown in Figure 3. It includes feature extraction, indexing, feature distance measure computation, ranking and retrieval. Various advancements in CBIR methods are evolving every year. A boosting framework, fusion of contourlet transforms and Zernike moments and a computations intelligence based hybrid approaches are found in literature.

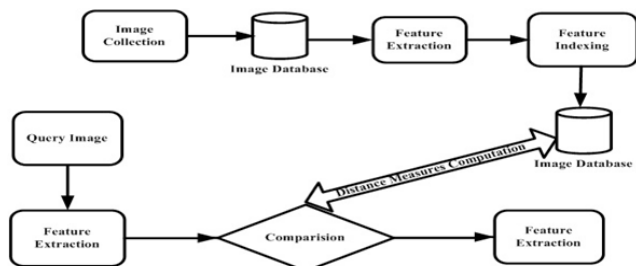


Figure 3. Overall CBIR architecture.

The CBIR uses the computer vision methods for digital image retrieval from databases. “Content based search” will perform the analysis with the actual contents instead keywords or tags annotated with the image. The word ‘content’ here might deals to colors, shapes, textures, or spatial orientation that can be obtained within the image. The web related image search engine relies on meta data and so this generates a lot of garbage results. Hence, CBIR is desirable in this case. Giving manual keywords to search images in a large database may retrieve wrong results. Also it is costly process and may not identify all keywords that postulate the image and hence it is inefficient. By providing a good indexing technique based on the actual contents of images may retrieve and produce accurate results. The CBIR improves the main usefulness of Picture Archiving and Communication System (PACS). It retrieves pictures with patterns of images instead of using alpha numeric indices.

The CBIR systems mostly suffer from “semantic gap”. It is a gap of high level image grasping of a human mind with the low level image estimation from computers. Recent CBIR techniques both includes the low level features like texture, colour and shape and high level features similar to facial expressions. In CBIR, feature detection and extraction are a low-level image processing operations. The process examines each pixel to detect if there exist a possible feature at that pixel, do it as an initial operation on that image. If this is a sub module of a bigger algorithm, then let this will test the image in the area of features. Before performing feature detection, use the Gaussian kernel in a scale space to mild the input image, and estimate one or more image features usually represented using confined derivative operations. In certain circumstances if the images feature detection process looks and results with high computational time then go for another best algorithm to find only some image parts for the searching features. Once if the features have been obtained, a confined image segment surrounding the feature could be extracted using some of the image processing techniques. This process results in producing feature descriptor or feature vector. This extracted features help to perform a similarity matching in the CBIR retrieval process. The low level features similar to texture, color, shape, spatial location, SIFT feature, SURF feature and their extraction is defined in the following sections.

3.1.1 Features Based on Color

It is the commonly adopted feature in image retrieval. Various color spaces are used for defining colors. Those color spaces are used depending on different applications. Lot of different color space description is discussed in^{26,27} they contain LAB, RGB (Red, Green, Blue), HSV (Hue, Saturation and Value) HSL (Hue, Saturation, Lightness), LUV, YCrCb and the Hue-Min-Max-Difference (HMMD)^{28,29}. The color covariance, color histogram and color moments^{30,31} are mostly used color features in RBIR. The leading color, scalable color, color structure and color layout are the mainly used color features in Moving Picture Experts Group (MPEG)-7³². With the origin of three color features, hue-hue pair and hue are estimated and the color invariants are built. The high level semantics are not straight related to the above said color features. For mapping the region colors into semantic color names with high level semantics, the region with color average could be used as the image color feature^{29,33}.

If the segmentation is erroneous, then it will end up as the original region is visually different from the average color. From³⁴, it is understood that in many cases, the dominant color and average color are very identical, but in few cases they look very different. Depending on the segmentation results only the color features are selected. It is observed that average color is not a desirable choice whether the segmentation results objects that do not have similar colors. In the literature, it is found that the color based CBIR techniques uses images which are not pre-processed. The appropriate color filters^{27,35} are essential to enhance the retrieval efficiency because the color images are always damaged with noises.

3.1.2 Texture Features

Few systems donot make use of texture features^{29,17} for image retrieval as like the color features. The texture is another salient feature for describing high level semantics in retrieval of images, because it provides essential details in image cataloguing as it defines the context of many real world images like clouds, fruitskin, bricks, fabric and trees. The result of applying Wavelet transform³⁶ or Gabor filtering³⁷, confined statistical measures like wold features proposed by³⁸ and six Tamura texture features³⁹ are the commonly using texture features in the process of image retrieval. The regularity, line likeness, roughness, directionality, contrast and coarseness are the various Tamura features. Among them coarseness, directionality and regularity are the most important³⁹ features. These three are related to other are less effective with respect to texture description.

The texture browsing descriptors^{19,32} are obtained from MPEG-7. They are regularity, directionality and coarseness. It is found that Brodatz texture⁴⁰ will perform outstanding with word features like randomness, directionality and periodicity. The Tamura features fail to work for multiple resolutions that are considered for measurement. The wold features are get affected by image distortions like orientation differences due to viewpoint distortion⁴¹ and scale. If the texture regions in the image are not organized and similar⁴⁰, it would result in poor retrieval response for natural scene images. But for Brodatz textures, the above will work well. The human vision study^{31,37} may match well with Wavelet and Gabor features in most of the image retrieval. But the actual design of Gabor filter and wavelet transform is only meant for rectangular images. But in RBIR, the region of image is having erratic-shapes. Hence, in such type of retrieval methods, the texture features are received related

to the texture nature of pixels or tiny blocks presented in the region^{29,37}. But for natural image representation³², the Edge Histogram Descriptor (EHD) is most suitable and effective.

3.1.3 Shape Feature

One of the most distinct concepts is shape feature. This feature has consecutive boundary segments, aspect ratio, Fourier descriptors, circularity and moment invariants⁴². The color and texture features are more useful in domain particular images like manmade objects. Still, the shape features are essential features but they do not have that much popularity in Region-Based Image Retrieval (RBIR) like texture and color features. The erroneousness of segmentation has been resulted that they are not as famous as texture and color features. To explore the inherent benefits of RBIR, the shape features could be used as evaluators by some system. For instance, the orientation and eccentricity features are used for this purpose discussed in²⁹.

3.1.4 Spatial Location

Not only texture, color and shape features are important but also spatial location feature is very much useful with region cataloguing. For an instance an image containing trees with grass in ground could have comparable texture and color features, but the spatial locations of them are dissimilar with tree leaves normally appears at the top of an image, while grass leaves at the bottom. So, it is very easy to define the spatial locations as 'left, right, top and bottom' depending on the place of the region in an image^{43,44}. The minimum bounding rectangle and region centroid are utilized to find the spatial location details are found in⁴⁵. Also the center spatial of a region has been applied to define the spatial location details were discussed in²⁹.

In semantic feature extraction, relative spatial affinity is more essential than complete spatial location. The directional affinity between objects such as 'right|left' and 'above|below' have been easily described using 2D-string⁴⁶ and with its alternative. Only directional affinities are not enough by without considering the topological affinities while representing the semantic image contents. The algorithm in⁴⁷ which refers the touch, front, right, up, left, down with spatial context modeling is used to offer performance enhancement in semantic related image retrieval.

3.1.5 SIFT Feature

The SIFT algorithm is invariant to changes in orientation and scale of an image. The first stage of this algorithm is constructed using scale space with Gaussian function. The next key stage is to obtain difference of Gaussian where potential interest points are identified. It uses k-d tree to identify nearest neighbours with less computational time. Then consistent orientation is assigned to the key points. Histogram is created using sample points of the image and highest peak of the histogram is noted. A few top peaks within that range are used to create a key point with that orientation. Finally, the key point descriptors are built forming histograms on 4×4 pixel neighbourhood with 8 bins each. Hence SIFT algorithm generates $4 \times 4 \times 8 = 128$ dimensions and elements.

3.1.6 SURF Feature

It stands for SURF. It was to some extent inspired by the SIFT algorithm. The standard SURF version extracts minimal points which are the strongest features of a given image. The points of interest are considered by calculating the image variance. In next step, a vector is created to excerpt the required image features. So, the number of interested points and the number of SURF features are always same. Because it extracts only limited number of points (64 column matrix), it is computationally faster as compared to SIFT. The new method of fusing the SIFT and SURF features is discussed in⁴⁸ which gave the better retrieval efficiency than these individual methods.

3.2 Image Similarity Using Visual Signatures

After obtaining image signature, the next step is to focus on accurate image retrieval. Various basic frameworks have been already defined for image similarity. The most wanted features to be ensured in this are local linearity (using triangle inequality in a neighbourhood), concord with semantics, invariance to background (region dependent querying) and robustness to noise (in large scale and in real time). A design by incorporating various methods had shown in Figure 4. like supervised, semi or unsupervised learning, region based, global based similarity or both, segmentation based closeness matching and computation, using hypothetical, considering vectors or aggregate of features, deterministic closeness or fuzzy and computing closeness over linear space or non-linear regions.

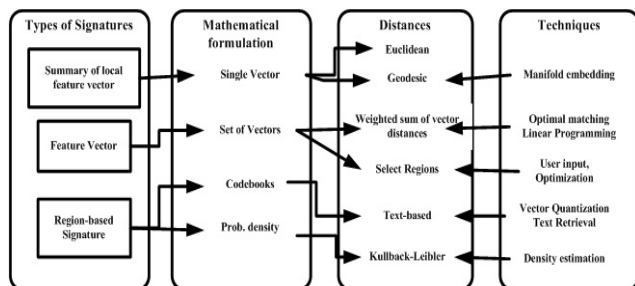


Figure 4. Various types of image comparison measures, their mathematical foundations and methods for estimating them.

The mostly applied method to image retrieval is content based. It retrieves images depends on image content using image meta data or human attached meta data. But human annotation is a tough and time absorbing process, and hence the retrieval process has to be automated. By participating, the user in retrieval process to refine the image search by asking them to continuously mark each result as ‘relevance’, ‘irrelevant’ or ‘neutral’ and this approach in CBIR systems is called *relevance feedback method*. To compare a given image with an image in database, the CBIR relies only on distance measure. It examines in contrast the nearness of two images in innumerable ranges such as texture, color, spatial locations and shape. Hence, zero value of distance measure means perfect match of images with the given query by considering the above said dimensions. If it is higher than zero, then different types of similarities will exit between images.

The major categories of CBIR gaps defined as: A disparity between the low level constituents are mined by computers from the image and the high level understanding of human image cognition is called *semantic gap*. A disparity between the methods of image objects capturing and object that present in the real world is called *sensory gap*. A disparity between the levels of CBIR integration with general purpose image retrieval system is known as *integration gap*. Automation of *feature extraction gap* is an algorithm generated gap. The catalogue of various *gaps* is discussed in⁴⁹. By representing, how ontology helps in image retrieval by shrinking the semantic inequality among the low level, high level features will provide a better solution for the CBIR system. A signature constructed similarity search in CBIR is found in literature.

4. Ontology Assisted Image Retrieval

Ontology means a particular explanation of a conceptualization. It projects a domain in a proper way of representation. In old era, image tags with texts are only used in web image retrieval. There are some text dependent image retrieval systems are already available for the web such as Google and Yahoo. Those machines use text features like file names as indices for searching images in the web. Numerous image retrieval engines are under construction. The low level descriptors of these engines are remote from semantic concepts. Except those systems only relies on human-annotations. Hence, there is a necessary to define and middle approach to image understanding. Few systems may define a particular domain using domain experts by detecting *vocabularies* used to define objects of interest. The most desirable thing in image retrieval is domain-independent visual concept ontology. This type of ontology driven description supports automatic recognition based on image processing techniques. The visual concept ontology is described in²⁶. The ontology driven knowledge acquisition is necessary for building the visual concept ontology. In this, a domain is specified using a tree structure with class hierarchy of its sub elements at each level. We can take an example domain in Medical Pathology or biological organisms.

In ontology based retrieval, the knowledge gathering process is done as follows. The visual idea ontology in Figure 5. has three parts such as Color, Spatial Temporal and texture concepts. The architecture of ontology applied image retrieval process is given in Figure 6. The image feature extraction done by computer will result with meaningful image concepts. These concepts may be color, texture, shape or spatial locations. Mapping those one or more resultant concepts into ontology will interpret the conceptual meaning of an image. If the retrieval query captures the actual users’ intention from this ontology representation, it will definitely reduce the *semantic disparity* between man and machine. In an intelligent image retrieval process, different type of indexing schemes has been applied starting from text based, keyword annotated, field based, structure based, content based to ontology based. Still, image retrieval is in its infant stages only because of the *semantic disparity*.

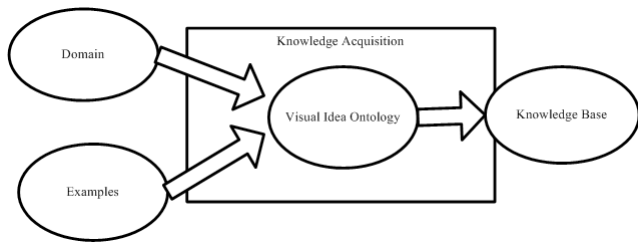


Figure 5. The visual idea ontology.

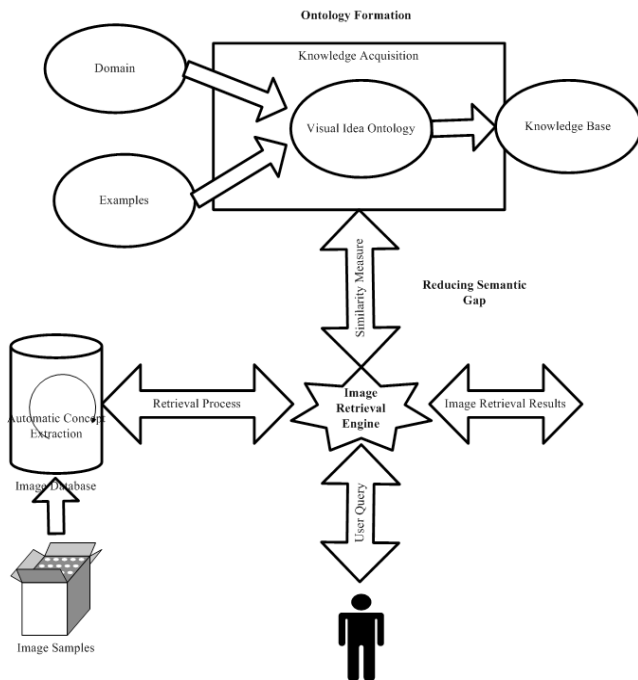


Figure 6. Architecture of ontology applied image retrieval process.

The image context description could be framed using ontology from the above said image concepts. Applying Description Logics (DL), the knowledge representation could be formed. The DAML (DARPA Markup Language) and OIL (Ontology Interface Language) are used for this implementation which is available with OWL (Web Ontology Language). Rules for describing relation between image features in ontology can be defined using the DL also. Once the concept ontology in Figure 7 and Figure 8 been framed (for example spatial ontology), the similarity matching of user query with extracted image feature is estimated through the ontology hierarchy. This provides more closeness to user query with images in database. There are some tools have been developed namely “OntoVis⁵⁰⁻⁵⁷” which perform three tasks namely domain knowledge acquisition, ontology driven visual

acquisition and image example management. The benefit of using visual idea ontology is to fill the semantic gap as much as possible between low and high level concepts.

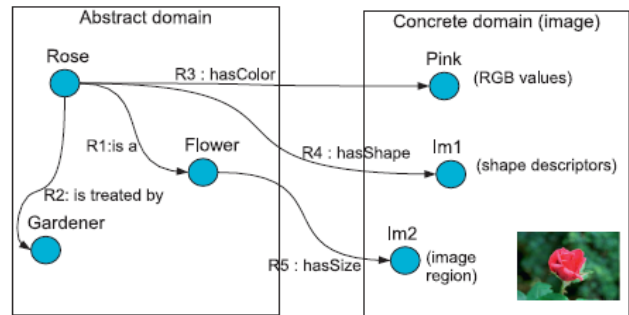


Figure 7. Ontological concept description in image interpretation.

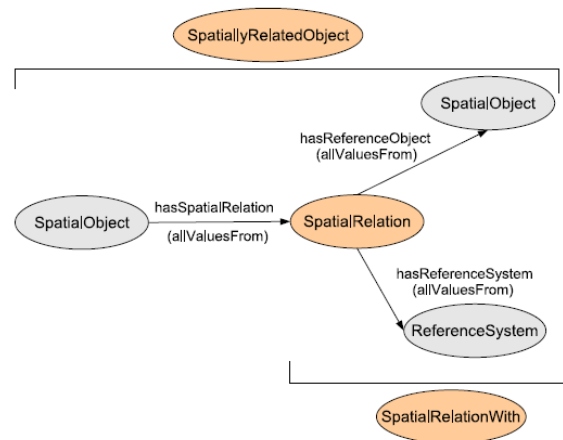


Figure 8. Manifestation of spatial relation ontology.

4.1 The Ontology Formation Model Using Protégé

The *prototype* model is used here because ontology formation cannot go with design and implementation phase as in Figure 9. The initial step in ontology framing is knowledge acquisition and hence the domain knowledge could be acquired from domain experts. Then it is refined by clients with the help of their feedbacks. For complex ontology’s the user acceptance is the main one. In this formation process, the top level classes’ selection could be done using RDFS. These classes should tell what image context is described and the remaining ontology should tell how it is described. The higher level class alone will not describe a total image, but it should serve as a whole to annotate and retrieve them.

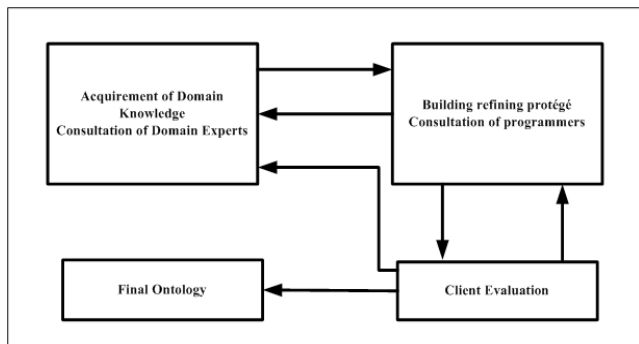


Figure 9. Development model for ontology formation.

5. Discussion and Conclusion

The data on web got exponential increase from bits to Big Data in recent years. Clicking each result of web is time consuming process and for an intolerant user who needs best results with little work. The ranked results do not serve the purpose if the user intends to make further clicks on the result to find the best one; providing O-A-V triplets which are semantically extracted for every web link will afford the user with treasured insight by saving their time. The aim of using this O-A-V representation not only provides the semantic relations of objects but also helps us to integrate and share data among different web resources. The web agents can easily use this information which is in machine interpretable form by performing compound operations and deliver the users with best search results.

Even though this method shows an improvement in the search results than the current data retrieval methods, a self-governing benchmark standard is required for assessing semantic based search systems. The absence of such fashionable and particular benchmarks created it difficult for the proposed system to assess it precisely. Presently, the web related document retrieval system is in its most embryonic state. In future, the proposed model will try to enhance the semantic relations which are intra within web page into inter web relations along with the amalgamation of data using the ontology’s of the aimed web resources. The algorithm developed by the proposed model determines the most appropriate triplets which

should be showed with every web link. It affords a facility of catching the mind set and probing patterns of users by emerging ontology’s which improves the search practice. The ontology not only connects the web resources but also helps to authenticate the classification groups in which an entity pertaining to use the resource of web. Also by applying a proximity calculation of keywords based scoring method which is one among many techniques and that can be used for ranking the web pages.

The classical research interest in image retrieval was done with CBIR, low level feature extraction, etc. In CBIR technique, the low level image features could not always represent high level semantic perceptions in the users’ mind. Hence, the CBIR schemes should provide supreme provision in linking the ‘semantic gap’ among low level visual features and the fruitfulness of human semantics. This research work delivers a wide-ranging survey of current work in the direction of tapering down the ‘semantic gap’. The high level semantics can be combined with CBIR system for shrinking the semantic gap using some computer vision and machine learning techniques. Different solutions to lessening the semantic gap may be by using ontology representation of image objects that will interpret the high level ideas in user mind, machine learning approaches which combine query ideas of user with basic level extracted features of an image, getting the relevance feedback of users to transparent their real expectation, providing a meaningful template for user to enhance the high level interpretations of user expectations, intermix the proofs from and the visual web image retrieval and HyperText Markup Language (HTML) text.

Although there is no generic and automated algorithm for image retrieval without the above said gaps. The argument of CBIR with high level imports and classical systems with low level features, this work gives an idea for ‘semantic gap’ reduction using ontology shown in Figure 10. To implement fully automated image retrieval system with high level semantics requires some type of visual concept ontology to be built for low level feature extraction and map them into high level semantics.

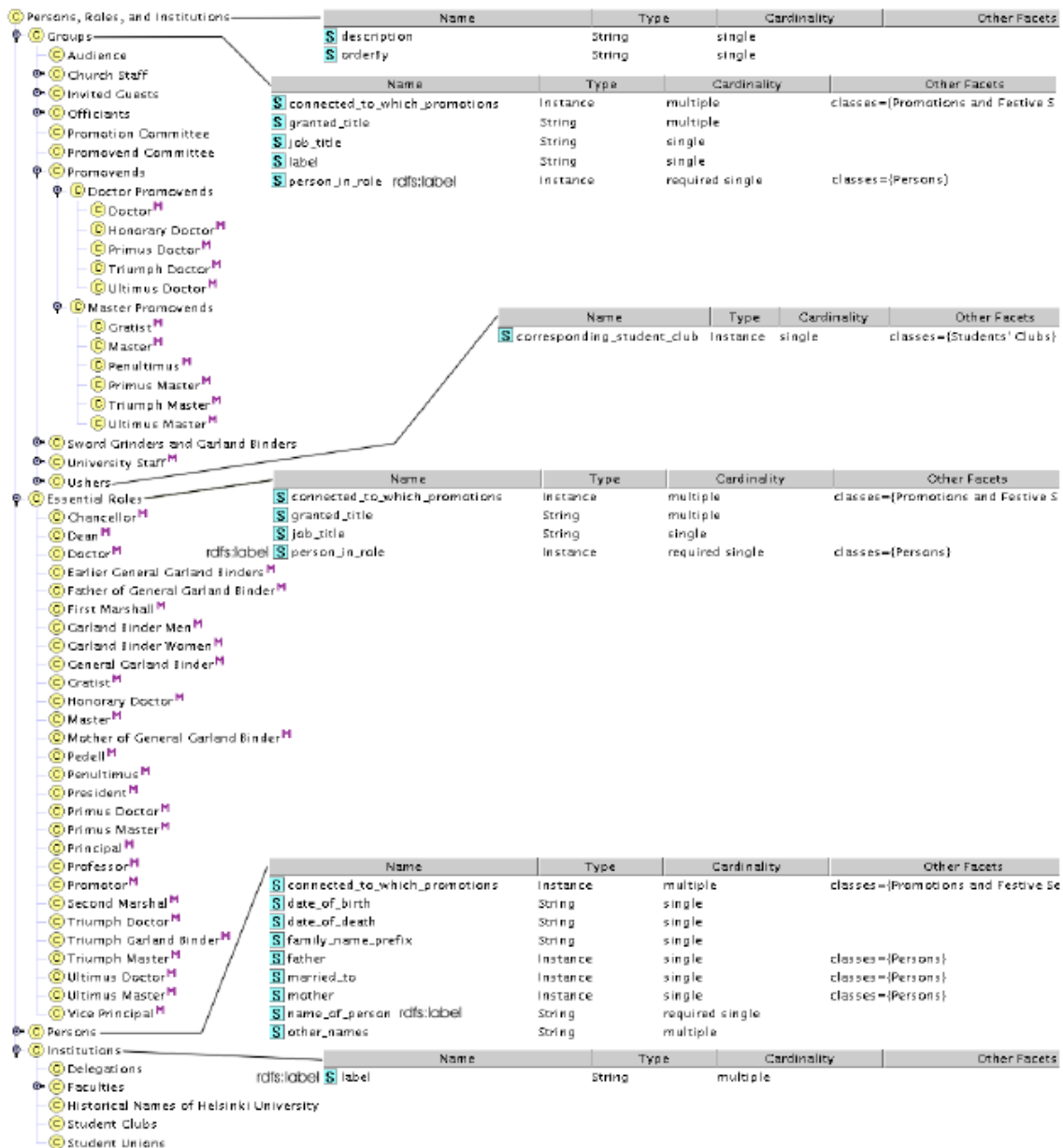


Figure 10. Ontology structure of different persons, roles and universities.

6. References

- Liu Y, Zhang D, Lu G, Ma WY. A survey of content-based image retrieval with high-level semantics. Pattern Recognit. Elsevier. 2007; 40(1):262–82.
- Luke S, Spector L, Rager D. Ontology-based knowledge discovery on the world-wide web. In: Working Notes of the Workshop on Internet-Based Information Systems at the 13th National Conference on Artificial Intelligence (Association for the Advancement of Artificial Intelligence (AAAI96)); 1996. p. 96–102.
- Dzbor M, Domingue J, Motta E. Magpie--towards a semantic web browser. In: The Semantic Web-International Standard Musical Work Code (ISWC).Springer. 2003; 2870:690–705.
- Lopez V, Pasin M, Motta E. Aqualog: An ontology-portable question answering system for the semantic web. In: The Semantic Web: Research and Applications. Springer. 2005; 3532:546–62.
- Hawking D. Overview of the TREC-9 Web Track. In: Text REtrieval Conference (TREC). 2000.
- Bizer C, Lehmann J, Kobilarov G, Auer S, Becker C, Cyganiak R, et al. DBpedia-A crystallization point for the Web of Data. Web Semantics: Science, Services and Agents on the World Wide Web. Elsevier. 2009; 7(3):154–65.

7. Shekarpour S. DC Proposal: Automatically transforming keyword queries to SPARQL on large-scale knowledge bases. In: *The Semantic Web--International Standard Musical Work Code (ISWC)*, Springer. 2011; 7032:357–64.
8. Wollbrecht J, Larmande P, De Lamotte F, Ruiz M. Clever generation of rich SPARQL queries from annotated relational schema: application to semantic web service creation for biological databases. *BioMed Central (BMC) Bioinformatics*. 2013; 14(1):126.
9. Yang Y, Yang L, Wu G, Li S. Image relevance prediction using query-context bag-of-object retrieval model. *Multimedia, Institute of Electrical and Electronics Engineers (IEEE) Transactions on Multimedia*. 2014; 16(6):1700–12.
10. Pujara J, Miao H, Getoor L, Cohen W. Knowledge graph identification. In: *The Semantic Web--International Standard Musical Work Code (ISWC)* Springer. 2013; 8218:542–57.
11. Wang C, Gao M, He X, Zhang R. Challenges in chinese knowledge graph construction. In: *31st Institute of Electrical and Electronics Engineers (IEEE) International Conference on data engineering workshops(ICDEW)*; 2015. p. 59–61.
12. Fernández M, Cantador I, López V, Vallet D, Castells P, Motta E. Semantically enhanced information retrieval: an ontology-based approach. *Web Semantics: Science, Services and Agents on the World Wide Web*. Elsevier. 2011; 9(4):434–52.
13. Vijayarajan V, Dinakaran M, Lohani M. Ontology based O-A-Vinformation extraction from web pages in search engine result retrieval. In: *Advanced Computing, Networking and Informatics-Springer*.2014; 1:611–20.
14. Knuth DE, Jr JHM, Pratt VR. Fast pattern matching in strings. *Society for Industrial and Applied Mathematics (SIAM)Journal on Computing*. 1977; 6(2):323–50.
15. Lanzenberger M, Sampson J, Rester M. Visualization in ontology tools. In: *Proceedings of International Conference on Complex, Intelligent and Software Intensive Systems (CISIS09)*, Institute of Electrical and Electronics Engineers (IEEE) Computer Society; 2009. p. 705–11.
16. Schreiber ATG, Dubbeldam B, Wielemaker J, Wielinga B. Ontology-based photo annotation. *IEEE Intelligent Systems*. Institute of Electrical and Electronics Engineers (IEEE). 2001; (3):66–74.
17. Stanchev P, Green D, Dimitrov B. High level color similarity retrieval. *International Journal of Information Theories and Applications* FOI ITHEA. 2003; 10:283–7.
18. Salmi M, Boucheham B. CBIR based on Cell Color Coherence Vector (Cell-CCV). In: *International Society for Knowledge Organization (ISKO)-Maghreb: Concepts and Tools for knowledge Management (ISKO-Maghreb)*, 4th International Symposium. Algeria;2014. p. 1–5.
19. Manjunath BS, Ohm J-R, Vasudevan VV, Yamada A. Color and texture descriptors. *Institute of Electrical and Electronics Engineers (IEEE) Transactions on Circuits and Systems for Video Technology*. 2001; 11(6):703–15.
20. Prabhu J, Kumar JS. Wavelet Based CBIR Using color and texture feature extraction by gray level coocurrence matrix and color coocurrence matrix. *Journal of Computer Science*. 2014; 10(1):15–22.
21. Chang WD, Im CH. Enhanced template matching using dynamic positional warping for identification of specific patterns in electroencephalogram. *Hindawi Publishing Corporation, Journal of Applied Mathematics*.2014; 2014:1–7.
22. Ng PC, Henikoff S. SIFT: Predicting amino acid changes that affect protein function. *Nucleic Acids Research*. Oxford University Press. 2003; 31(13):3812–4.
23. Deselaers T, Keyser D, Ney H. Features for image retrieval: an experimental comparison. *Information Retrieval Boston*. Springer. 2008; 11(2):77–107.
24. Bay H, Ess A, Tuytelaars T, Gool VL . Speeded-Up Robust Features (SURF). *Computer Vision and Image Understanding*. Elsevier. 2008; 110(3):346–59.
25. Liu GH, Yang JY, Li Z. Content-based image retrieval using computational visual attention model. *Pattern Recognition*. Elsevier. 2015; 48(8):2554–66.
26. Maillot N, Thonnat M, Boucher A. Towards ontology-based cognitive vision. *Machine Vision and Applications*. Springer. 2004; 16(1):33–40.
27. Plataniotis KN, Venetsanopoulos AN. *Color image processing and applications*. Springer Science and Business Media; 2000 May 26.
28. Fan J, Gao Y, Luo H, Xu G. Automatic image annotation by using concept-sensitive salient objects for image content representation. In: *Proceedings of the 27th annual international Association for Computing Machinery(ACM) Special Interest Group on Information Retrieval (SIGIR) conference on research and development in information retrieval*.USA; 2004. p. 361–8.
29. Mezaris V, Kompatsiaris I, Strintzis MG. An ontology approach to object-based image retrieval. In: *Proceedings-International Conference on Image Processing (ICIP)*, Greece. 2003; II:511–4.
30. Jing F, Li M, Zhang L, Zhang HJ, Zhang B. Learning in region-based image retrieval. In: *Image and Video Retrieval*. Springer. 2003; 2728:206–15.
31. Wang JZ. Semantics-sensitive integrated matching for picture libraries and biomedical image databases. *Stanford University*; 2000. p. 1–221.
32. Manjunath BS, Salembier P, Sikora T. *Introduction to MPEG-7: multimedia content description interface*. John Wiley and Sons; 2002. p.396.
33. Hua KA, Vu K, Oh JH. SamMatch: a flexible and efficient sampling-based image retrieval technique for large image databases. In: *Proceedings of the seventh Association for Computing Machinery (ACM) international conference on Multimedia*; 1999. p. 225–34.
34. Liu Y, Zhang D, Lu G, Ma WY. Region-based image retrieval with perceptual colors. In: *Advances in Multimedia Information Processing-Phase Change Materials (PCMs)* Springer. 2005; 3332:931–8.
35. Plataniotis KN, Androustos D, Venetsanopoulos AN. Adaptive fuzzy systems for multichannel signal processing. In the *Proceedings ofInstitute of Electrical and Electronics Engineers (IEEE)*. 1999; 87(9):1601–22.

36. Wang J, Li J, Chan D, Wiederhold G. Semantics-sensitive retrieval for digital picture libraries. *D-Lib Magazine*. 1999; 5(11):121–7.
37. Ma WY, Manjunath BS. Netra: A toolbox for navigating large image databases. *Multimedia Systems*. Springer. 1999; 7(3):184–98.
38. Liu F, Picard RW. Periodicity, directionality, and randomness: Wold features for image modeling and retrieval. *Institute of Electrical and Electronics Engineers (IEEE) Transactions on Pattern Analysis and Machine Intelligence (TPAMI)*. 1996; 18(7):722–33.
39. Tamura H, Mori S, Yamawaki T. Textural features corresponding to visual perception. *Institute of Electrical and Electronics Engineers (IEEE) Transactions on Systems, Man, and Cybernetics*. 1978; 8(6):460–73.
40. Brodatz P. Textures: a photographic album for artists and designers. *Dover Publications*; 1966.
41. Leow WK, Lai SY. Scale and orientation-invariant texture matching for image retrieval. *Series in Machine Perception and Artificial Intelligence*. World Scientific. 2000; 40:151–64.
42. Mehrotra R, Gary JE. Similar-shape retrieval in shape data management. *Institute of Electrical and Electronics Engineers (IEEE) Computer Magazine*. 1995; 28(9):57–62.
43. Song Y, Wang W, Zhang A. Automatic annotation and retrieval of images. *World Wide Web*. Springer. 2003; 6(2):209–31.
44. Mojsilovic A, Gomes J, Rogowitz BE. Isee: Perceptual features for image library navigation. In: *Electronic Imaging*; 2002. p. 266–77.
45. Tong S, Chang E. Support vector machine active learning for image retrieval. In: *Proceedings of the Ninth Association for Computing Machinery (ACM) International Conference on Multimedia*. USA; 2001. p. 107–18.
46. Chang SK, Shi QY, Yan CW. Iconic indexing by 2-D strings. *Institute of Electrical and Electronics Engineers (IEEE) Transactions on Pattern Analysis and Machine Intelligence (TPAMI)*. 1987; 9(3):413–28.
47. Ren W, Singh M, Singh S. Image retrieval using spatial context. In: *9th International Workshop on Systems, Signals and Image Processing*; 2002 .
48. Vijayarajan V, Dinakaran M. Feature based image retrieval using fused sift and surf features. *International Review on Computers and Software (IRECOS)*. Praise Worthy Prize. 2013; 8(10).2500–6.
49. Deserno TM, Antani S, Long R. Ontology of gaps in content-based image retrieval. *Journal of Digital Imaging (JDI)*. Springer. 2009; 22(2):202–15.
50. Alani H. TGVizTab: an ontology visualisation extension for Protégé. In: *Knowledge Capture(K-Cap'03), Workshop on Visualization Information in Knowledge Engineering*, Sanibel Island, Florida, USA; 2003 Oct 23–26.
51. Verma A, Kaur I, Singh I. Comparative analysis of data mining tools and techniques for information retrieval. *Indian Journal of Science and Technology*. 2016 Mar; 9(11):1–16.
52. Meenakshi A , Suganthi P, Aghila R, Nirmala S. Information retrieval using dynamic decision quadtree in soil database. *Indian Journal of Science and Technology*. 2016 Mar; 9(10):1–7.
53. Sajeer K, Rodrigues P. Novel approach of implementing speech recognition using neural networks for information retrieval. *Indian Journal of Science and Technology*. 2015; 8(3):1–5.
54. Lakshmi DR, Damodaram A, Rao MS, Lal JAC. CBIR using signature based similarity search. *Indian Journal of Science and Technology*. 2008 Oct; 1(5):1–6.
55. Kumar MS, Kumaraswamy YS. A boosting frame work for improved CBIR. *Indian Journal of Science and Technology*. 2013 Apr; 6(4):1–5.
56. Pandian AA, Balasubramanian R. Fusion of contourlet transform and zernike moments using CBIR for MRI brain tumor images. *Indian Journal of Science and Technology*. 2016 Aug; 9(29):1–8.
57. Khan SMH, Hussain A. A hybrid approach to CBIR using computational intelligence techniques. *Indian Journal of Science and Technology*. 2016 Jun; 9(21):1–8.