



Article

Involvement of Essential Signaling Cascades and Analysis of Gene Networks in Diabetes

Udhaya Kumar S. ¹, Bithia Rajan ¹, Thirumal Kumar D. ¹, Anu Preethi V. ², Taghreed Abunada ³, Salma Younes ³, Sarah Okashah ³, Selvarajan Ethiraj ⁴, George Priya Doss C. ^{1,*} and Hatem Zayed ^{3,*}

¹ School of BioSciences and Technology, Vellore Institute of Technology, Vellore 632014, Tamil Nadu, India; s.udhayakumar2018@vitstudent.ac.in (U.K.S.); bithia0205@gmail.com (B.R.); thirumalkumar.d@gmail.com (T.K.D.)

² School of Computer Science and Engineering, Vellore Institute of Technology, Vellore 632014, Tamil Nadu, India; anupreethi.v2019@vitstudent.ac.in

³ Department of Biomedical Sciences, College of Health and Sciences, QU Health, Qatar University, Doha 2713, Qatar; taghreed.abunada@qu.edu.qa (T.A.); sy1203986@student.qu.edu.qa (S.Y.); so1404563@student.qu.edu.qa (S.O.)

⁴ Department of Genetic Engineering, Kattankulathur Campus, SRM Institute of Science and Technology, Chennai 603203, Tamil Nadu, India; selvarajan.e@ktr.srmuniv.ac.in

* Correspondence: georgepriyadoss@vit.ac.in (G.P.D.C.); hatem.zayed@qu.edu.qa (H.Z.)

Received: 21 September 2020; Accepted: 22 October 2020; Published: 25 October 2020



Abstract: (1) Aims: Diabetes, defined as diabetes occurring in the context of obesity, is a serious health problem that is associated with an increased risk of premature heart attack, stroke, and death. To date, a key challenge has been to understand the molecular pathways that play significant roles in diabetes. In this study, we aimed to investigate the genetic links between diabetes and obesity in diabetic individuals and highlight the role(s) of shared genes in individuals with diabetes. (2) Methods: The interactions between the genes were analyzed using the Search Tool for the Retrieval of Interacting Genes (STRING) tool after the compilation of obesity genes associated with type 1 diabetes (T1D), type 2 diabetes (T2D), and maturity-onset diabetes of the young (MODY). Cytoscape plugins were utilized for enrichment analysis. (3) Results: We identified 546 obesity genes that are associated with T1D, T2D, and MODY. The network backbone of the identified genes comprised 514 nodes and 4126 edges with an estimated clustering coefficient of 0.242. The Molecular Complex Detection (MCODE) generated three clusters with a score of 33.61, 16.788, and 6.783, each. The highest-scoring nodes of the clusters were *AGT*, *FGB*, and *LDLR* genes. The genes from cluster 1 were enriched in FOXO-mediated transcription of oxidative stress, renin secretion, and regulation of lipolysis in adipocytes. The cluster 2 genes enriched in Src homology 2 domain-containing (SHC)-related events triggered by *IGF1R*, regulation of lipolysis in adipocytes, and GRB2: SOS produce a link to mitogen-activated protein kinase (MAPK) signaling for integrins. The cluster 3 genes were enriched in *IGF1R* signaling cascade and insulin signaling pathway. (4) Conclusion: This study presents a platform to discover potential targets for diabetes treatment and helps in understanding the molecular mechanism.

Keywords: diabetes; T2D; T1D; MODY; obesity; diabetes; protein-protein interaction

1. Introduction

Diabetes is a term that describes a causal pathophysiological link between obesity and diabetes [1]. In the last two decades, there has been a substantial rise in the number of people diagnosed with obesity and diabetes. This pattern forced a tremendous burden on medical care systems and is expected to

continue growing during the next decades [2]. Diabetes is currently considered the leading cause of modern chronic diseases, such as cardiovascular diseases, strokes, dementia, and cancer. The concept of diabetes has been linked to impaired pathways of metabolic cell signaling as well as altered insulin signaling, i.e., insulin resistance (IR), which upsurges the risk of developing type 2 diabetes (T2D) [3,4]. People with obesity, T2D, and diabetes have high levels of circulating extracellular vesicles (EVs). Various metabolic pathways, including the Phosphoinositide 3-kinases (PI3K)/ Protein Kinase B (Akt) pathway, MAPK, and mammalian target of rapamycin (mTOR) signaling, are altered by the influence of EVs on cellular and systemic responses [4]. In addition, diabetes-linked brain alterations are a consequence of disorders in insulin signaling and mitochondria, which upsurges the risk of developing neurodegenerative diseases [5]. Further, diabetes is strongly linked with an increased risk of primary human cancers [5–7]. Moreover, diabetes has been shown to induce inflammation and increase adenosine concentration, which, in turn, increases cell proliferation [7]. Individuals at risk of developing diabetes demonstrate a family history of T2D, earlier maternal record of diabetes, gestational diabetes mellitus (GDM), being small-for-gestational age at birth. They might also display signs of insulin resistance or other related conditions, including hypertension, dyslipidemia, polycystic ovary syndrome (PCOS). Patients with obesity, T2D, or diabetes have been shown to demonstrate endoplasmic reticulum stress, with noticeable effects on visceral adipose tissue (VAT) adipose tissue, fetoplacental vascular endothelium, liver, and skeletal muscles [8]. These complications of diabetes have emerged as significant threats in developing and under-developed nations, particularly driven by the worldwide rise in obesity rates.

Given the fact that obesity and T2D are closely associated, identifying the genetic link between these two complex polygenic diseases may help understand the driving factors of diabetes. Recently, three hypotheses have been developed to explain the molecular mechanisms of diabetes [9]: (i) The “inflammation hypothesis” states that obesity signifies a chronic inflammatory condition in which the inflammatory molecules produced by infiltrating macrophages in adipose tissue trigger pathological variations in insulin-sensitive tissues and β -cells [10,11]. (ii) The “lipid overflow hypothesis” states that obesity may result in upsurged ectopic lipid storage because of the restricted capacity of adipose tissue to appropriately store fat in obese individuals. Potentially damaging lipid components and metabolites may apply cytotoxic impacts on peripheral cells [12,13] (iii) The “adipokine hypothesis” states that the main trait of white adipose cells is to serve as an endocrine organ and to release variable hormones with auto- and paracrine-function. Increasing fat storage can trigger the dysfunctional release of endocrine factors, thereby causing metabolic damage of insulin target tissues and, ultimately, insulin yielding β -cells failure [14].

In 2010, the global estimate of people with diabetes was between 150–220 million. By 2040, it is projected to increase to 642 million [15]. The prevalence of T2D has increased dramatically during the last two decades, driven by the global increase in the number of obese individuals. Obesity and T2D are underpinned by a combination of genetic and environmental factors. Unhealthy eating habits and lifestyles are major environmental factors that contribute to T2D development [16]. Obesity is a significant contributor to lipid and glucose metabolic dysfunction, and it is known to cause organ dysfunction on a wider scale, affecting cardiac, liver, pulmonary, endocrine, and reproductive functions. Because of the consequences of the secretion of inflammatory adipokines, obesity is associated with immune dysfunction and is a major contributor to several types of cancer [17]. The pathophysiology of T2D includes microvascular complications (diabetic nephropathy, retinopathy, and neuropathy) as well as macrovascular complications (cerebrovascular disease, atherosclerosis, and cardiovascular disease) [18]. Microvascular complications involve abnormal glycemia, while macrovascular complications are unrelated to abnormalities in glycemia; however, hyperglycemia increases the risk of developing macrovascular complications [19]. It is extremely important to understand the role of genetic variations to be able to assess the susceptibility of an individual to identified risk factors. Genetic variations may describe why T2D affects only a small fraction of obese people when the majority of people with diabetes are obese. Candidate obesity genes and traits associated with

obesity include *LEP*, *MCR4*, *POMC*, and *PCSK1* [20,21]. Multiple candidate obesity genes, such as *FTO*, *NPC1*, *MC4R*, *SH2B1*, *NRX3*, *POMC*, *NEGR1*, and *BDNF*, were shown to be involved in adipose tissue development, function, and hyperphagia regulation [22]. Obesity-related genes impact hormones and associated peptide production, including *LEP*, *IGF2*, and *IGF1*, and receptors, such as *IGF1R*, *AR*, *FSHR*, *ESR1*, and *LEPR* [21]. The genes associated with T2D include *PPARG*, *KCNJ11*, *TCF7L2*, *FTO*, *IGF2BP2*, *KCNQ1*, *NOTCH2*, *HNF1A*, and *HNF1B* [23]. *ABCC8* and *KCNJ11* control insulin secretion through the ATP sensitive potassium channel, polymorphisms in these genes are associated with diabetes [24–26]. T2D is believed to have a different genetic architecture in obese and non-obese individuals [27]. Maturity-onset diabetes of the young (MODY), a monogenic form of diabetes, can result from mutations in one of the genes expressed in β -cell that include *GCK* [28], *HNF1A* [29], *HNF1B* [30], *HNF4A* [31], *PDX1* [32], and *B2M* [33]. These genes contribute to the transcription regulation of enzyme-encoding genes involving the transport and metabolism of glucose and other proteins essential for the normal function of β -cells [34]. The genes associated with MODY may contribute to the polygenic nature and development of T2D. A key genetic factor associated with T2D may be variants in the MODY-associated gene, *HNF1A* [35]. *FTO* is one of the best examples of a diabetogenic gene that promotes its impact through obesity. *FTO* was first recorded as an obesity susceptibility gene and was later reported as a T2D associated body mass index (BMI) gene [36]. Another linking mechanisms of obesity and diabetes involve the T-bet transcription factor [37], as well as via mitochondrial dysfunction [38,39]. The molecular pathways underlying the two complex polygenic disorders are still far from being well understood, considering the identification of several candidate genes for both obesity and diabetes. A comprehensive understanding of the underlying genetic influence and protein-protein networks will enable us to understand the molecular etiology of diabetes and thereby help manage and eventually prevent or cure diabetes.

2. Materials and Methods

2.1. Data Source

The dataset for the current research was gathered from obesity and co-morbid diseases database (OCDD) (<http://www.isical.ac.in/~systemsbiology/OCDD/home.php>) [40], PubMed, and Google Scholar. The compilation of obesity genes associated with Type-1 Diabetes (T1D), T2D, and maturity-onset diabetes of the young (MODY) was carried out using keywords “Obesity” AND “Type 1 Diabetes”, “Obesity” AND “Type 2 Diabetes” and “Obesity” AND “MODY” within the three data sources. These database search provided us with various obesity genes linked with T1D, T2D, and MODY. All genes were collected and manually curated for further process.

2.2. Circos Plot Construction and Data Visualization

Circos, a visualization software for comparative genomics [41], was used to identify overlapping genes. The Biomart package of R language was used to obtain the chromosomal information of the genes. To obtain the required cytoband for the circular representation of the data, genome University of California Santa Cruz (UCSC’s) table browser was used (<http://genome.ucsc.edu/cgi-bin/hgTables>) [42]. An online software, “shinyCircos”, was used to get the circular representation of the given data (<http://shinycircos.ncpgr.cn/>) [41]. A Venn diagram for all the genes belonging to T1D, T2D, and MODY, was plotted using an online server (<http://bioinformatics.psb.ugent.be/webtools/Venn/>).

2.3. PPI Network Construction and Visualization

The protein-protein interactions (PPI) network of the obesity genes associated with T1D, T2D, and MODY were constructed with the help of the online Search Tool for the Retrieval of Interacting Genes (STRING) database [43]. The STRING database provides a thorough assessment and incorporation of both physical (direct) and functional (indirect) PPIs. As STRING supports queries for multiple proteins, a list of the genes linking obesity and diabetes (T1D, T2D, and MODY) were uploaded to the STRING

database, and the search was restricted to *Homo sapiens*. The functional interaction between the query proteins was obtained using a high level of confidence (score ≥ 0.90). The interactions between the query proteins were obtained from STRING as a tab separated value (*tsv*) file. Cytoscape was used for the visualization of the PPI by importing the *tsv* file of the STRING database [44]. Cytoscape supports a range of automated algorithms for the network layout and helps to connect the query network to databases for functional annotations. Cytoscape helps to organize the imported network as a graph by representing the molecular species in the form of nodes and edges, where each node represented a protein product of single-gene and edges represented the protein-protein association. The interactions with excellent data support (high confidence ≥ 0.9) were selected for precision after hiding the disconnected nodes for PPI network construction. This network was then exported for visualization in Cytoscape. The GeneMANIA force-directed layout of the Cytoscape application was used for the display of the PPI network.

2.4. Identification of Protein Complexes and Pathways

The Molecular Complex Detection (MCODE) plugin of the Cytoscape app was used to identify the densely connected regions/clusters in the PPI network [45]. MCODE, a clustering algorithm, uses a vertex-weighted graph to identify the molecular complexes from the given PPI network as a whole. With advanced options set as default, the complexes generated from the algorithm were scored, ranked, and further processed to create a cluster network. The top three gene clusters of the interactive network were extracted according to their scores. ClueGO [46] and Cluepedia [47], Cytoscape plugins, facilitated the biological interpretation and visualization of functionally grouped terms of the selected gene clusters in the form of networks. ClueGO incorporates Gene Ontology (GO) terms and Kyoto Encyclopedia of Genes and Genomes (KEGG) pathways to generate a functionally structured GO/pathway term network from the selected clusters by using kappa score ≥ 0.4 . The analytical parameters used for annotation network generation were used as predefined by ClueGO. In conjunction with ClueGO, Cluepedia offers a detailed overview of the biological pathways or molecular mechanisms of the selected clusters based on GO, KEGG, and Reactome. With different levels of specificity criteria allowed for the visualization of the GO/pathway term network, we used a cutoff *p*-value ≤ 0.05 for visualizing the different pathways.

3. Results

3.1. Genes Associated with Diabetes

The OCDD database, along with other literature databases, PubMed, and Google Scholar, assisted our study by providing a comprehensive list of genes linking obesity and diabetes. Manual curation was performed for collected genes, and compilation of obesity genes associated with T1D, T2D, and MODY yielded 546 genes. For further processing, we used these 546 genes for gene networking and functional enrichment analysis. The Circos plot construction and data visualization showed that out of the 546 genes, a total number of 496 genes were associated with T1D, with connectivity rates ranged from 0.01% to 1.59% (Figure 1). In the case of T2D, 476 genes were mapped with connectivity ranged from 0.01% to 1.60% (Figure 1). In MODY, 254 genes whose percentage of connectivity ranged from 0.03% to 2.61% were found (Figure 1). The *INS* gene demonstrated the highest percentage of interconnectedness in the three gene networks for T1D (1.59%), T2D (1.60%), and MODY (2.61%). In this analysis, all the identified obesity genes associated with T1D, T2D, and MODY were interspersed across the human chromosome. We plotted a Venn diagram to illustrate the associations between the identified obesity genes. The results exhibited 213 genes that were shared between T1D, T2D, and MODY (Figure 2 and Supplementary Table S1). This plot uses circles to display the associations between the genes described, and overlapped circles have shared genes between the different phenotypes.

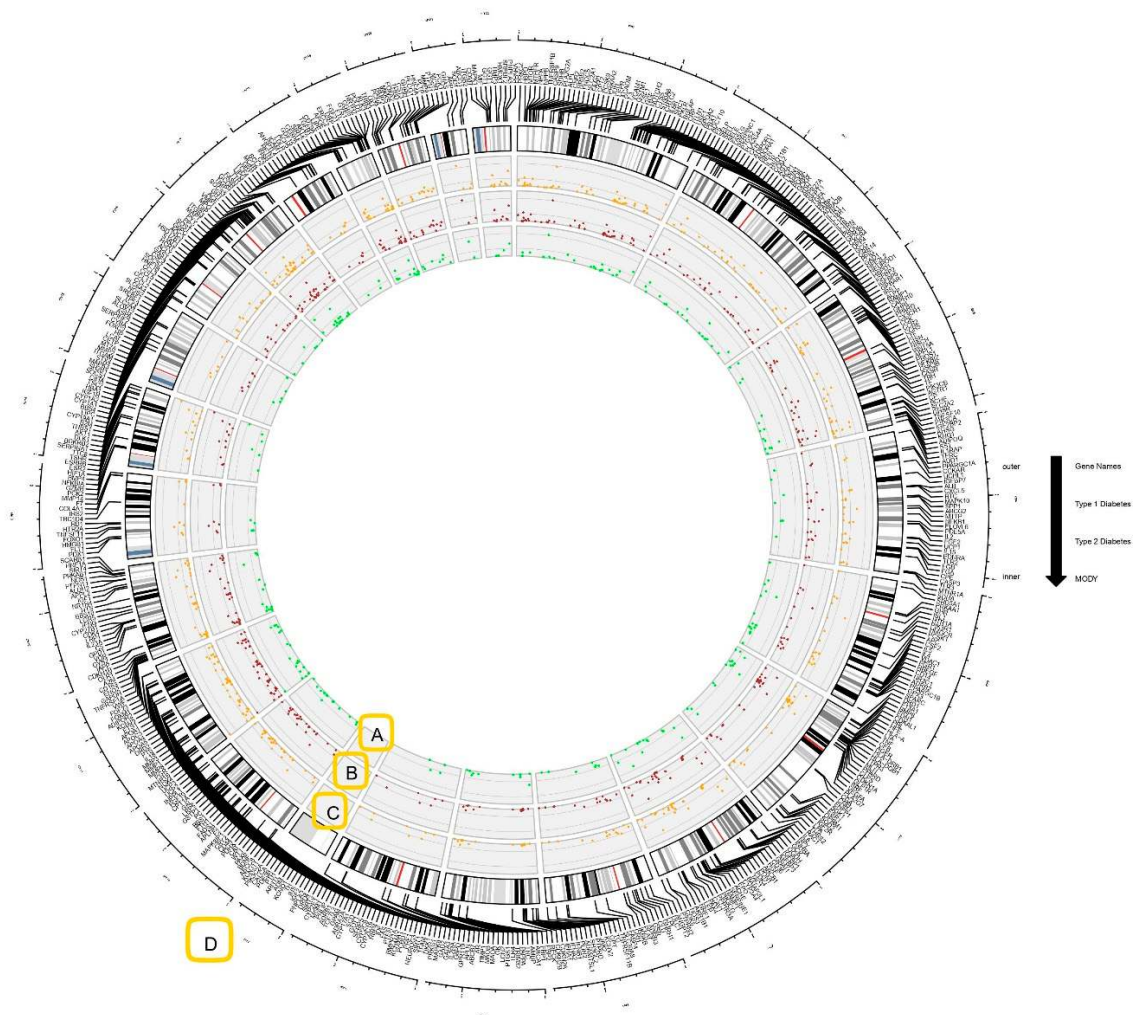


Figure 1. Circos plot demonstrating the genes associated with type-1 diabetes (T1D), type-2 diabetes (T2D), and maturity-onset diabetes of the young (MODY). The percentage of connectivity of genes in (A) MODY (green scatter points), (B) T2D (red scatter points), and (C) T1D (orange scatter points). (D) The group of genes from the same chromosome number are represented outside the Circos. The chromosome representation was provided by ideograms from a cytoband file format and imported to shinyCircos.

3.2. PPI Network Construction and Visualization

The STRING database derived the interactions between the query gene products from known experimental and in silico methodologies. The PPI network was represented in the form of nodes and edges, where each node represented a protein product of single-gene and edges represented the protein-protein association. The interactions with excellent data support (high confidence ≥ 0.9) were selected for precision after hiding the disconnected nodes for PPI network construction. The gene/protein interaction network consisted of 514 nodes (proteins) and 4126 edges (interactions) with an estimated clustering coefficient of 0.242 (Figure 3A,B). As a result, the protein network provided a combined score (≥ 0.9) for each gene and exhibited the interacting partners. Further, the protein network was analyzed with the NetworkAnalyzer plugin from Cytoscape to elucidate the topological parameters of the identified genes (Table 1). The simple parameters were built from the protein network resulting in clustering coefficient, node numbers, characteristic path length, network heterogeneity,

centralization, density, and diameter. These results further helped us to delineate the complex network with the help of the MCODE plugin.

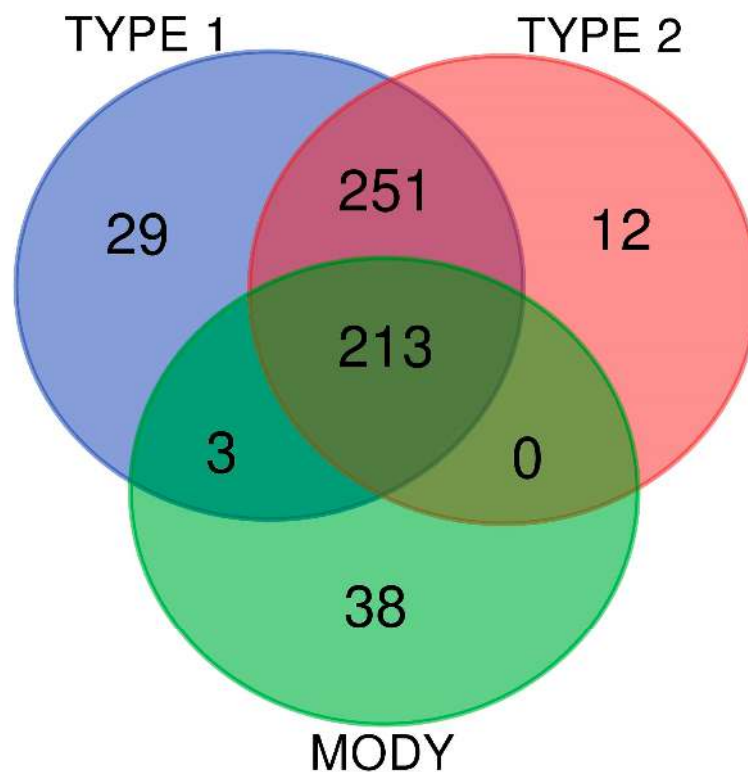


Figure 2. The Venn diagram of gene intersection between the three gene sets of T1D, T2D, and MODY. The plot depicts the similarities and differences between the obesity-associated genes among T1D, T2D, and MODY. The blue, red, green circles represent T1D, T2D, and MODY, respectively.

Table 1. Network statistics of string interactions from the Cytoscape plugin (NetworkAnalyzer) for the identified obesity genes associated with type-1 diabetes (T1D), type-2 diabetes (T2D), and maturity-onset diabetes of the young (MODY).

S.no	Simple Parameters	Comprehended Values
1.	Nodes number	514
2.	Characteristic path length	3.171
3.	Network heterogeneity	1.068
4.	Clustering coefficient	0.484
5.	Average number of neighbors	16.054
6.	Network centralization	0.196
7.	Network density	0.031
8.	Network diameter	9

3.3. Identification of Protein Complexes and Pathways

For a detailed analysis of the extensive PPI network, the extraction of dense regions around a protein from the PPI network identifies functionally related protein groups. The top three MCODE-generated clusters scored 33.61, 16.788, and 6.783, respectively, based on the vertex weighting of the MCODE algorithm. The first cluster scoring 33.61, was calculated from the seed *AGT* with 83 nodes and 1378 edges. The second cluster scoring 16.788 was derived from *FGB* with 34 nodes and 277 edges.

The third cluster scoring 6.783 was derived from *LDLR* with 24 nodes and 78 edges. The intra-cluster networks derived from these seeds are represented (Figure 4A–C). The identified clusters, their scores, and respective node IDs are described (Table 2).

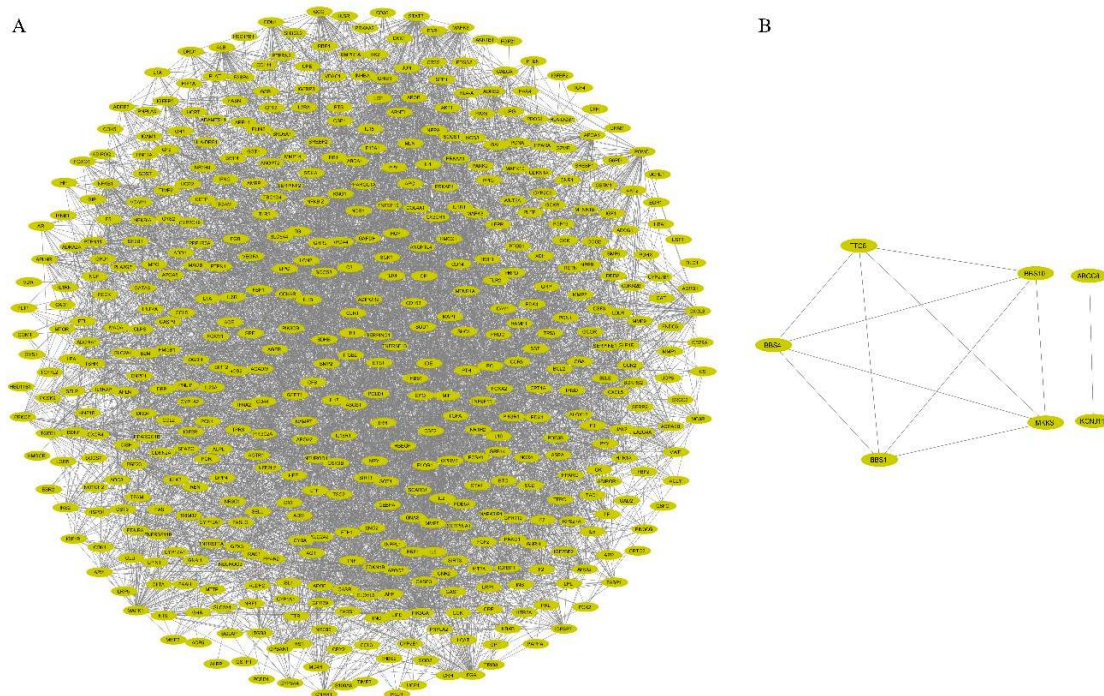


Figure 3. The protein–protein-interacting networks of genes associated with diabetes. (A) The network backbone of the identified genes comprised 514 nodes and 4126 edges with an estimated clustering coefficient of 0.242 using Cytoscape. (B) The two disconnected networks with 5 and 2 nodes, respectively. Ellipse represents the nodes, and the edges are shown as lines.

Table 2. The most densely interconnected regions of the protein-protein interactions (PPI) network are categorized by MCODE from our identified associated genes between Obesity, T1D, T2D, and MODY.

Cluster	Score (Density * # Nodes)	Nodes	Edges	Nodes IDs
1	33.61	83	1378	<i>C3, TNC, APOA2, MTNR1A, MTNR1B, CXCL5, SERPINA1, AHSG, ALB, GAST, BMP4, SPP1, SST, APOA5, PYY, F5, FGF23, IGFBP3, PPY, CCK, TRH, CCKAR, GNRH1, GCG, GRP, OPRM1, HCRT, GPR39, GHSR, IGFBP7, DRD4, POMC, CX3CR1, ADRA2A, APOA1, TAC1, NTS, GAL, ADRA2B, TIMP1, HTR1A, CCR2, APOB, FGA, BDKRB2, GNAI1, KNG1, PNPLA2, APOE, APLNR, APLN, IGFBP1, CASR, AGTR1, CXCL8, EDN1, MLN, EDNRA, PROC, OXT, PCSK9, AGT, CNR1, DRD2, PIK3R1, PIK3CA, F2, CXCR4, SERPINC1, IGFBP5, CCL5, APP, HTR2A, CCR5, CSF1, CNR2, NPY, GCGR, CP, TF, IL6, CST3, ADORA1</i>
2	16.788	34	277	<i>GIP, PROS1, FGB, TGFB1, CLU, ADRB3, IGF1, MC4R, VWF, A2M, CALCA, PTH, IAPP, HGF, CGA, RAMP1, ADRB1, DRD1, F13A1, SERPINF2, SPARC, TSHR, GNAS, GLP1R, THBS1, GPBAR1, ADRB2, SERPINE1, ADM, CRH, MC3R, GHRH, IGF2, VEGFA</i>
3	6.783	24	78	<i>SH3GL2, INPPL1, TIMP2, CTSS, IL5, LTF, SHC1, PIK3C2A, IRS1, TFRC, MMP8, PTPN1, HP, B2M, LDLR, PRK CZ, MMP9, INS, WNT5A, FTH1, INSR, IGF1R, IGF2R, RPS27A</i>

* Network computation based on node score cutoff and K-core; Cluster seeds are in bold.

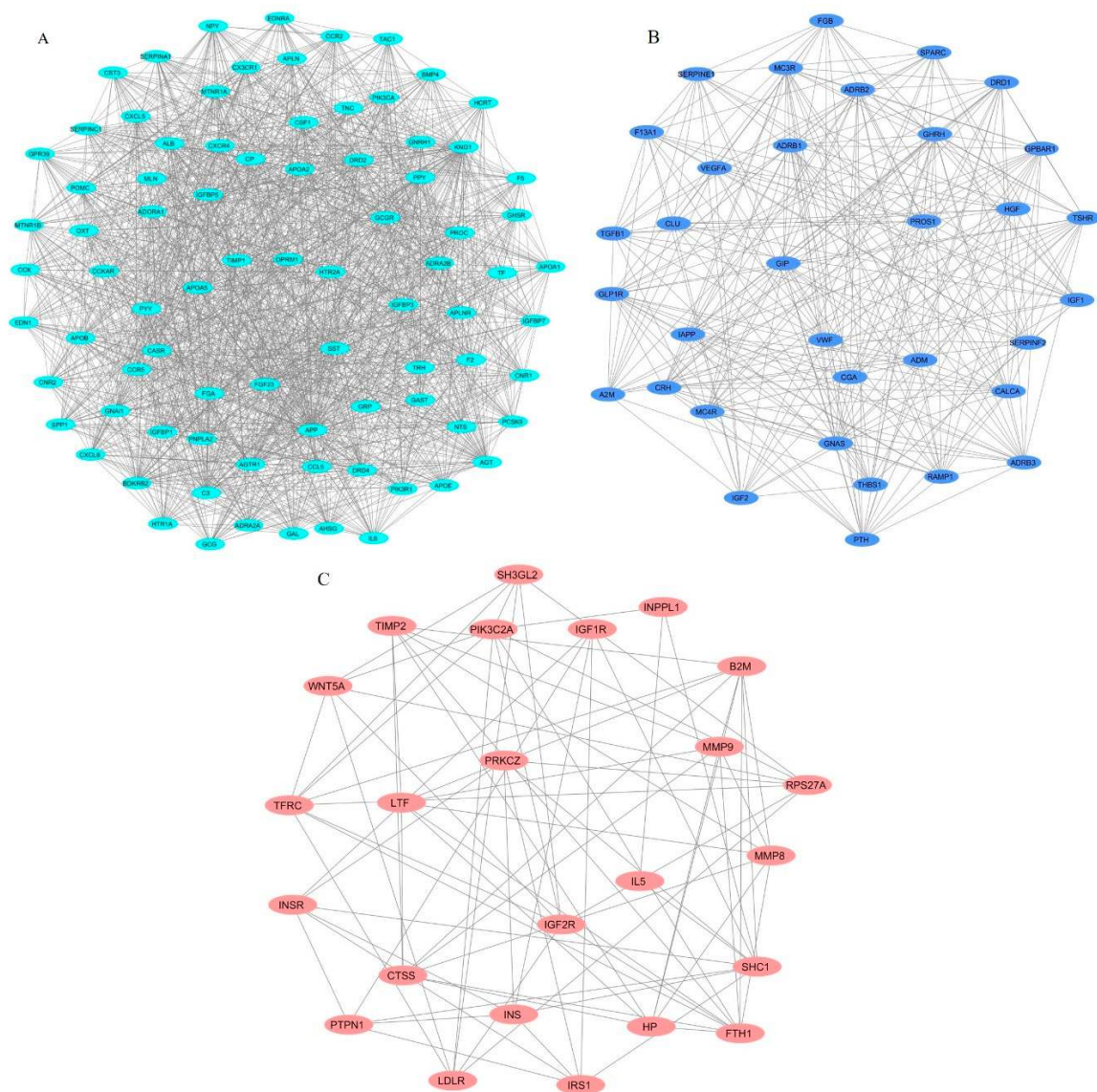


Figure 4. The top three clusters derived from the protein-protein interactions (PPI) network using MCODE. (A) Cluster 1 (score = 33.61), (B) Cluster 2 (score = 16.788), and (C) Cluster 3 (score = 6.783). Ellipse and lines represent the nodes and edges, respectively. Here, the clusters indicate direct PPIs in genes by multiple partners.

To determine the GO terms and enriched pathways from the identified genes, we annotated all three clusters using ClueGO. The ontologies are annotated based on the inbuilt function from ClueGO, which resulted in cellular components, molecular function, biological process, KEGG, and REACTOME categories. The enrichment and pathway analysis showed that the genes from cluster 1 were enriched in FOXO-mediated oxidative stress transcription, uptake by insulin-like growth factor binding proteins (IGFBPs), and regulation of insulin-like growth factor (IGF) transport, renin secretion, Interleukin-10 signaling, transport of γ -carboxylated protein precursors from the endoplasmic reticulum to the Golgi apparatus, platelet aggregation, cholesterol metabolism, plasma lipoprotein assembly–remodeling–clearance, chylomicron assembly–remodeling–clearance, metabolism of fat-soluble vitamins, low-density lipoprotein (LDL) clearance, high-density lipoprotein (HDL) remodeling, regulation of lipolysis in adipocytes, complement and coagulation cascades and others (Figure 5). The cluster 2 genes enriched in SHC-related events triggered by IGF1R, regulation of lipolysis in adipocytes, a common pathway of fibrin clot formation, and GRB:SOS produce a link to

MAPK signaling for integrins (Figure 6). The cluster 3 genes enriched in the insulin signaling pathway, IGF1R signaling cascade, regulation of lipolysis in adipocytes, insulin receptor signaling cascade, integrin signaling, Interleukin-2,3,5, signaling, Interleukin receptor SHC signaling, cargo recognition for clathrin-mediated endocytosis and growth hormone receptor signaling (Figure 7).

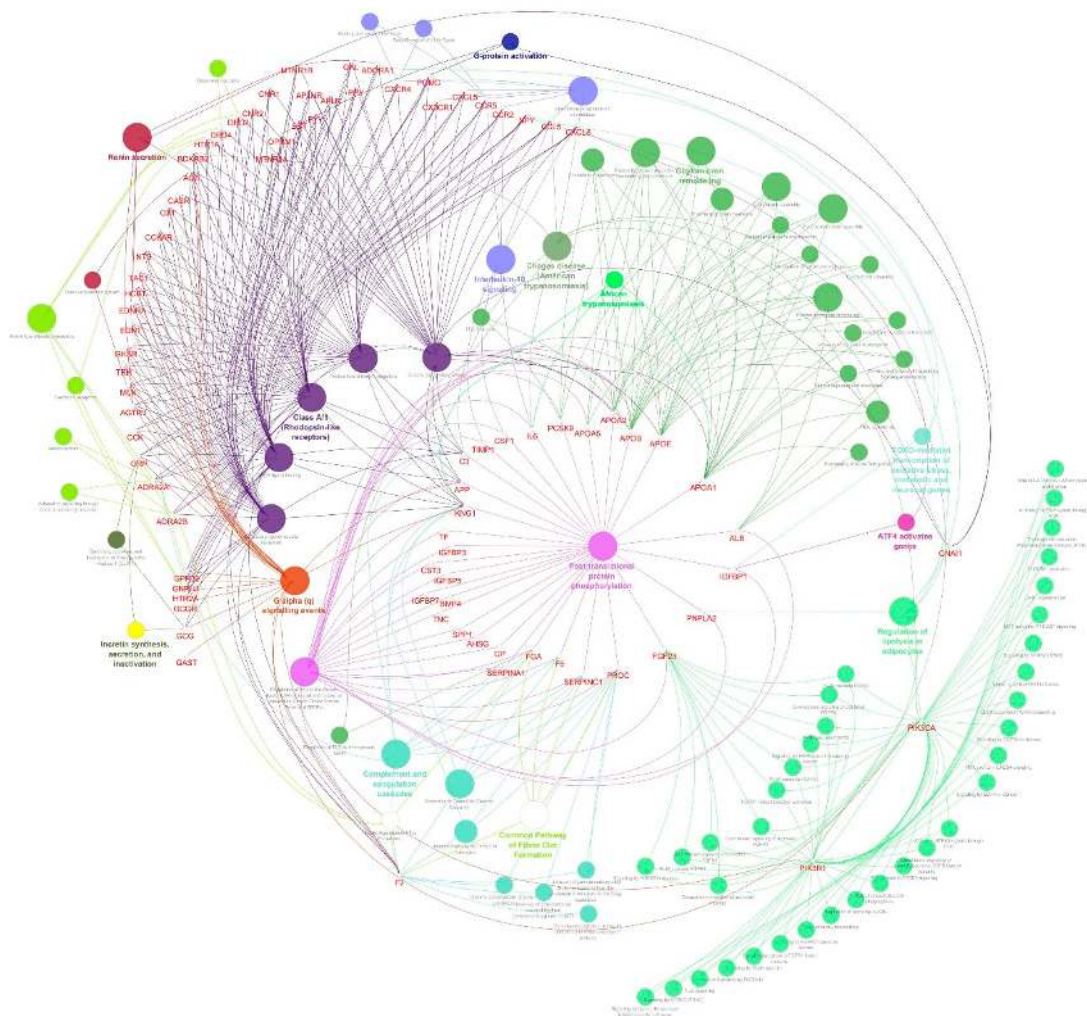


Figure 5. Molecular enrichment networks of genes associated with diabetes and the cluster 1 network enrichment analysis. Visualization of GO gene enrichment profiling using Cytoscape on the basis of ClueGO/CluePedia network processing deciphered from cluster 1. A combination cluster enrichment analysis, such as the GO BF, MF, and KEGG pathway, was provided by the plugin. GO term network connectivity identified by gene-shared edges and cohesive clusters (kappa score ≥ 0.4) and showing pathways (p -value ≤ 0.05). The node size indicates the p -value. The color code of nodes corresponds to the functional group to which they belong. Bold colored characters signify the most essential functional terms which define the pathways within each class. Each node constitutes a precise term for cluster 1.

Cluster 1 seed demonstrated that *AGT* is involved in the renin secretion and renin-angiotensin system. Around 32 genes from cluster 1, including *APOA1*, *APOA2*, *APOB*, *APOE*, *FGA*, *IGFBP1*, and *IL6* are involved in uptake by Insulin-like Growth Factor Binding Proteins (IGFBPs) and the regulation of Insulin-like Growth Factor (IGF) transport. The apolipoproteins of cluster 1 *APOB*, *APOA1*, *APOA2*, *APOE*, *APOA5*, and *PCSK9* are involved in cholesterol metabolism, plasma lipoprotein assembly–remodeling–clearance, chylomicron assembly–remodeling–clearance, metabolism of fat-soluble vitamins, LDL clearance, HDL remodeling. The regulation of lipolysis in adipocytes involves six genes: *ADORA1*, *GNAI1*, *NPY*, *PIK3CA*, *PIK3R1*, and *PNPLA2*. Cluster 2 seed,

FGB is involved in platelet degranulation and response to elevated platelet cytosolic Ca^{2+} , along with *A2M*, *CLU*, *F13A1*, *HGF*, *IGF1*, *IGF2*, *PROS1*, *SERPINE1*, *SERPINF2*, *SPARC*, *TGFB1*, *THBS1*, *VEGFA*, and *VWF* genes. *IGF1* and *IGF2* are involved in SHC-related events triggered by *IGF1R* genes. Regulation of lipolysis in adipocytes involved *ADRB1*, *ADRB2*, *ADRB3*, *CGA*, *GNAS*, and *TSHR*. *INS*, *INSR*, and *IRS1* of cluster 3. The insulin signaling pathway of cluster 3 involved *INPPL1*, *INS*, *INSR*, *IRS1*, *PRK CZ*, *PTPN1*, and *SHC1*. *INS*, *INSR*, *IRS1*, and *SHC1* were involved in the insulin receptor signaling cascade. *PTPN1* and *SHC1* were involved in platelet aggregation/plug formation. Supplementary Tables S2–S4 show the detailed enriched pathways along with the corrected *p*-value (Bonferroni step down), % of associated genes, and the number of genes for clusters 1, 2, and 3, respectively. Each signaling cascade involves essential genes and influences other molecular pathways through protein-protein interaction. However, in concern with diabetes interlinked signaling cascades, it is highly suggestible to focus and characterize each dysregulated pathway that might implicate directly/indirectly to obesity-associated diseases, such as T1D, T2D, and MODY.

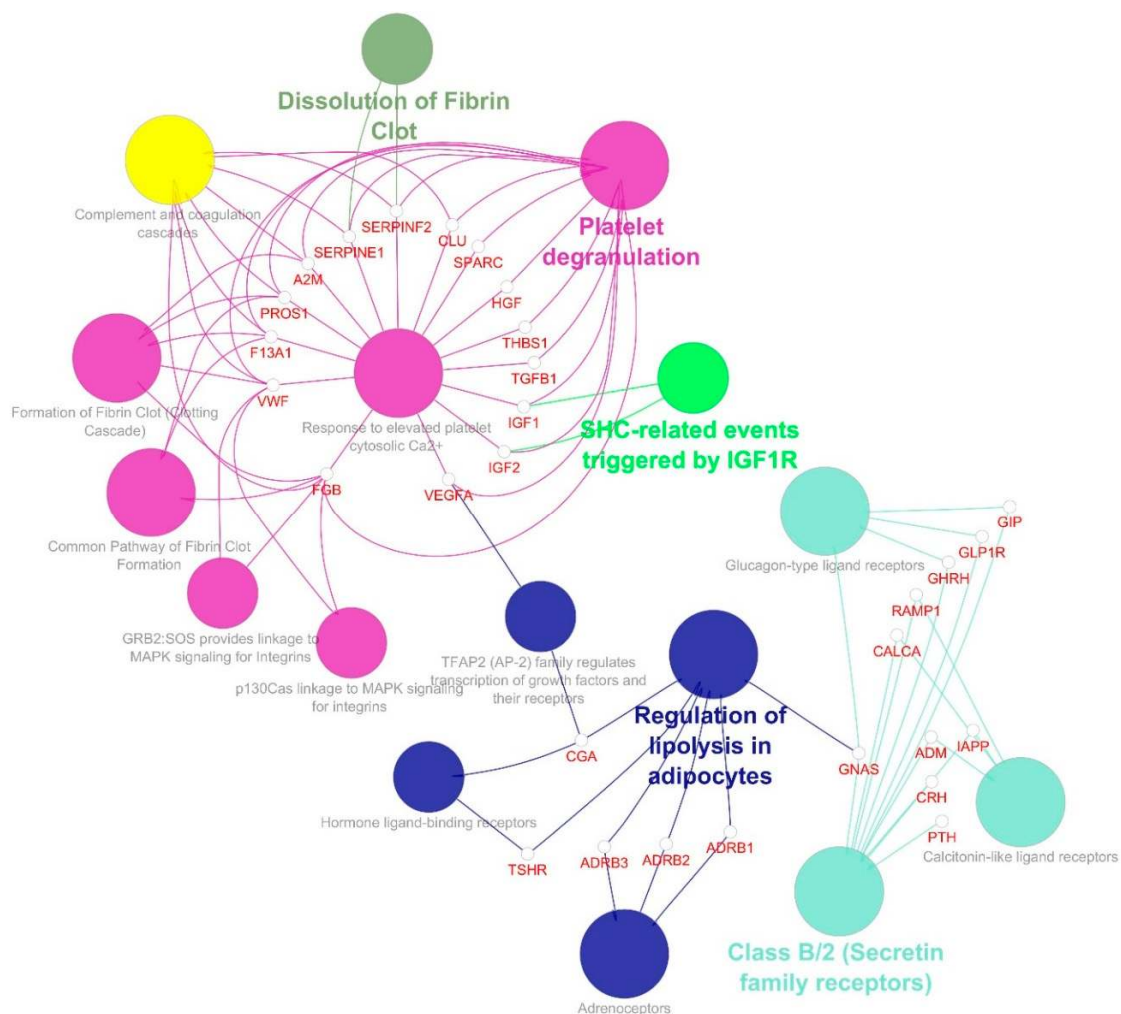


Figure 6. Molecular enrichment networks of genes associated with diabetes and the cluster 2 network enrichment analysis. Visualization of GO gene enrichment profiling using Cytoscape on the basis of ClueGO/CluePedia network processing deciphered from cluster 2. A combination cluster enrichment analysis, such as the GO BF, MF, and KEGG pathway, was provided by the plugin. GO term network connectivity identified by gene-shared edges and cohesive clusters (κ score ≥ 0.4) and showing pathways (p -value ≤ 0.05). The node size indicates the p -value. The color code of nodes corresponds to the functional group to which they belong. Bold colored characters signify the most essential functional terms which define the pathways within each class. Each node constitutes a precise term for cluster 2.

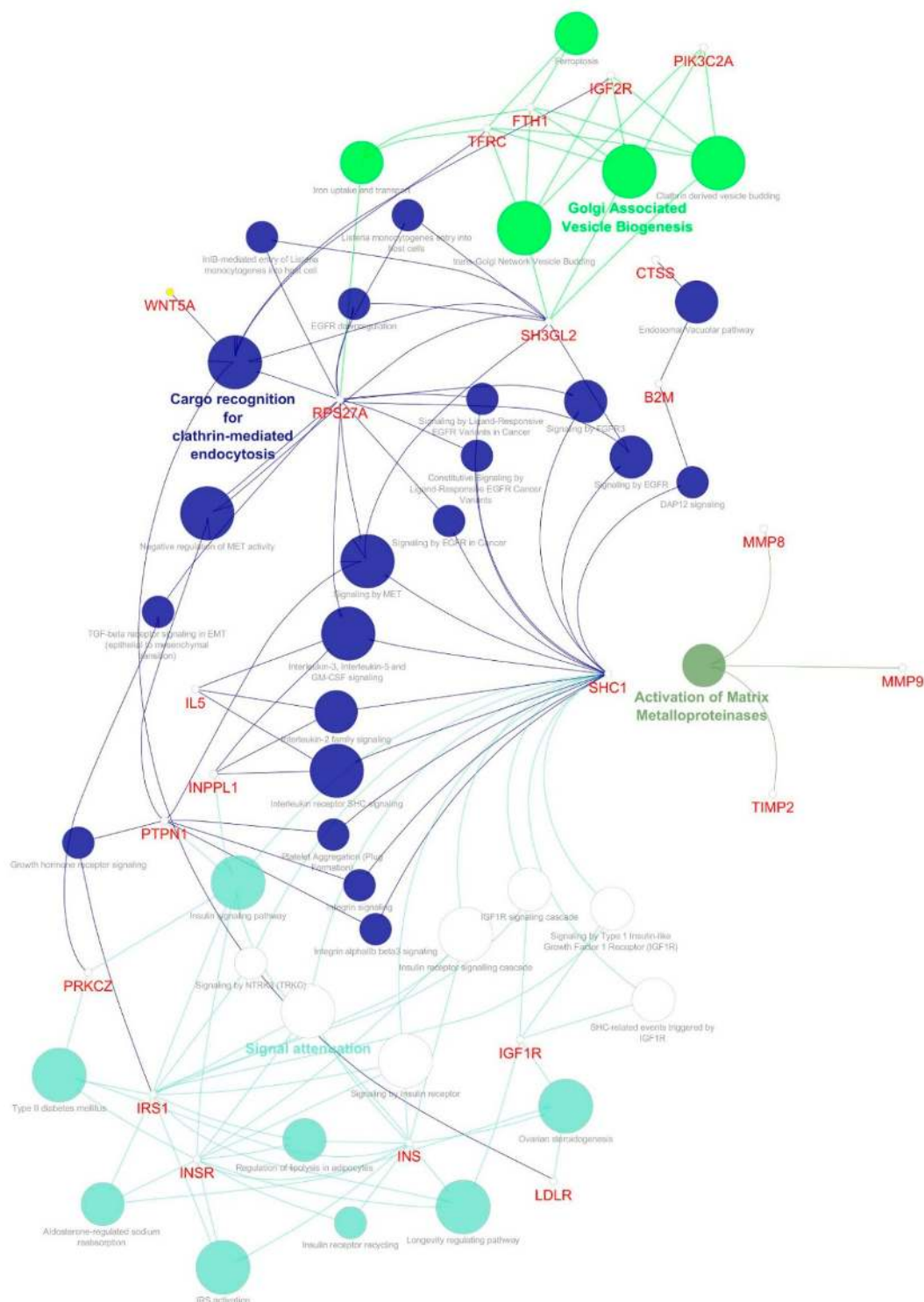


Figure 7. Molecular enrichment networks of genes associated with diabetes and the cluster 3 network enrichment analysis. Visualization of GO gene enrichment profiling using Cytoscape on the basis of ClueGO/CluePedia network processing deciphered from cluster 3. A combination cluster enrichment analysis, such as the GO BF, MF, and KEGG pathway, was provided by the plugin. GO term network connectivity identified by gene-shared edges and cohesive clusters (κ score ≥ 0.4) and showing pathways (p -value ≤ 0.05). The node size indicates the p -value. The color code of nodes corresponds to the functional group to which they belong. Bold colored characters signify the most essential functional terms which define the pathways within each class. Each node constitutes a precise term for cluster 3.

4. Discussion

Several studies have revealed a considerable number of diabetes-associated susceptibility genes; however, the potential mechanisms underlying this complex disorder remain poorly understood. The proteins encoded by susceptibility genes may determine an individual's susceptibility to diabetes via their encoded PPIs. In this study, a total of 546 genes that are associated with diabetes were identified, and a PPI network using STRING was generated (Figure 3). We identified a network of genes that comprised 514 nodes and 4126 edges with an estimated clustering coefficient of 0.242. Based on the vertex weighting of the MCODE algorithm, we identified three clusters with scores of 33.61, 16.788, and 6.783, each. Genes from cluster 1 were enriched in FOXO-mediated transcription of oxidative stress, renin secretion, and regulation of lipolysis in adipocytes. Cluster 2 genes enriched in SHC-related events triggered by IGF1R, regulation of lipolysis in adipocytes, and GRB2: SOS produce a link to MAPK signaling for integrins. Cluster 3 genes were enriched in IGF1R signaling cascade and insulin signaling pathways. The cluster analysis helped classify groups of functionally related proteins. Comprehending the biological processes of these functionally associated proteins will improve the understanding of the biological process of the PPI network as a whole [48–50].

Obesity and diabetes are major risk factors for each other as well as other diseases. The precise mechanisms linking the two complex polygenic diseases remain unclear. However, three hypotheses, namely “inflammation hypothesis”, “lipid overflow hypothesis”, and “adipokine hypothesis”, were proposed to elucidate such mechanisms [9]. In line with the “inflammation hypothesis”, we found that genes of clusters 1 and 3 are mainly involved with an insulin signaling pathway, IGF1R signaling cascade, and insulin receptor signaling cascade (Figures 5 and 7). The progression of insulin resistance linked to obesity and T2D is attributed to inflammatory mechanisms in which the pro-inflammatory cytokines are produced by the abundance of adipose tissue. Such pro-inflammatory cytokines, tumor necrosis factor (TNF- α) and interleukin-6 (IL-6) are believed to link obesity to T2D through insulin resistance [51,52]. Overexpression of TNF- α in adipose tissue of obese individuals interferes with insulin resistance signaling via phosphorylating and converting IRS-1 to inhibit the proximal steps of insulin resistance signaling [53]. Islet amyloid polypeptide (IAPP) formed by islets of the pancreas can cause inflammasome NLR family pyrin domain containing 3 (NLRP3) in macrophages and dendritic cells to release IL-1 β via its receptor on β -cells, which can signal cell death, impaired insulin secretory ability, and T2D. Obesity activates inflammasome NLRP3 and increases IL-1 β through activation of caspase 1 and causes insulin resistance and reduction in fat oxidation. Saturated fatty acids and ceramide, associated with obesity and nutrient overload, can also trigger NLRP3 inflammasome to produce IL-1 β that acts on the liver and impairs the activity of liver insulin, contributing to insulin resistance [54]. It has become clear that in the etiology of T2D, IL-1 β is a crucial cytokine because both β -cell dysfunction and death have been implicated in this [55].

Accumulation of fat in tissues with inadequate storage capacity contributes to lipotoxicity in obese subjects, as stated by the “lipid overflow hypothesis”, eventually repressing insulin signaling transduction. Our data showed that genes of cluster 1 were enriched in FOXO-mediated transcription of oxidative stress and regulation of lipolysis in adipocytes. These genes were mainly involved in cholesterol metabolism, assembly–remodeling–clearance of plasma lipoprotein and chylomicron, metabolism of fat-soluble vitamins, LDL clearance, and HDL remodeling (Figure 5). The non-esterified fatty acids (NEFAs) synthesized in adipose tissues of obese individuals are believed to link insulin resistance with β -cell dysfunction [3]. Forkhead box protein O1 (*FOXO1*) transcription factor plays a crucial role in the protection of cells against oxidative stress. However, in tissues affected by diabetic complications, it promotes apoptosis and plays a destructive role [56]. In inflammatory signaling, *FOXO1* plays a collective role via NF- κ B signaling. This cooperation couples pro-inflammatory cytokine production with insulin resistance and is thought to contribute to more significant inflammatory signaling in obesity and T2D.

FOXO1 transcription factor also functions in the liver to incorporate hepatic insulin action to very low density lipoprotein (VLDL) production. In hepatic insulin resistance, the activity of *FOXO1* is

augmented, leading to the overproduction of hepatic VLDL. Lipid metabolism abnormalities increase the risk of coronary artery disease in subjects with obesity and diabetes [57,58]. Disturbances in fat storage and mobilization are important factors that cause insulin resistance [59]. Storage and mobilization of fats involve chylomicron assembly, remodeling, and clearance involving *APOA1*, *APOA2*, *APOA5*, *APOB*, *APOE* genes, and the apolipoproteins assembly, remodeling, and clearance involving *APOA1*, *APOA2*, *APOA5*, *APOB*, *APOE*, *ALB*, and *PCSK9* genes. These apolipoproteins play a vital role in lipid homeostasis [60]. Therefore, excessive production of lipids, their storage, and mobilization to ectopic tissues contributes to obesity-associated insulin resistance and T2D. Healthy adipose tissue is characterized by the ability to expand passively to accommodate periods of excess nutrients. However, if the limit of adipose tissue expansion is reached, in adipose tissue, lipids could no longer be stored adequately and consequently “overflow” to other peripheral tissues, a phenomenon described by the “Lipid Overflow Hypothesis” [12,13]. Subcutaneous adipose tissue is considered the largest adipose tissue depot and the least biochemically harmful site for lipid conservation. Either by hypertrophic obesity (cell size increase) or hyperplastic obesity (new cell recruitment), this depot will extend. Unlike the hyperplastic response, which appears to protect against the dysfunction of subcutaneous adipose tissue, hypertrophic obesity is linked to an increased risk of T2D [61,62]. The storage of this ectopic fat in other non-subcutaneous adipose tissue is linked directly to the development of insulin resistance and T2D [63,64]. Therefore, accumulated fat in tissues, which is not ideal for lipid storage and, as a result, lipid compounds can pile up in those tissues that impede insulin signal transduction.

Our data showed that genes of clusters 1 and 2 are involved in the adipocytes regulatory function of lipolysis (Figures 5 and 6), and genes of cluster 3 play a regulatory role in the insulin signaling pathway and lipolysis of adipocytes (Figure 7). In accordance with the “adipokine hypothesis”, in obese individuals, the excess of adipose tissue functions as an endocrine organ by releasing adipokines that result in insulin resistance and T2D development. The important adipokines include retinol-binding protein 4, adiponectin, vaspin (*SERPINA 12*), leptin, and the inflammatory chemokine (*CXCL 10*). Mutations in gene encoding leptin or the leptin receptor are reported to cause severe obesity, hyperphagia, and insulin resistance [65]. Our data showed that *ADRB1*, *ADRB2*, *ADRB3*, *CGA*, *GNAS*, *TSHR*, *INS*, *INSR*, and *IRS1* genes are involved in the diabetes PPI network (Figure 7). Polymorphisms in the three subtypes of β -adrenoceptor (*ADRB1*, *ADRB2*, and *ADRB3* genes) show a correlation with obesity and body weight-related disorders [66]. *ADRB1* also contributes to increased secretion of renin and ghrelin hormones, which are associated with T2D and insulin resistance [67]. Studies suggest that *p.Arg389Gly* polymorphism in the *ADRB1* may be a potential genetic biomarker to assess the risk of developing cardiovascular diseases [68]. Interestingly, many genes that are known to cause obesity are highly expressed in the central nervous system (CNS), which plays a crucial role in sensing and controlling the energy status of the body [69,70]. The imbalance of energy intake and energy expenditure in obesity is attributed to dysregulation of hypothalamic pathways [70]. One example is the melanocortin 4 receptor (MC4R) involved in the hypothalamic leptin–melanocortin signaling pathway that maintains energy homeostasis and is associated with food intake suppression. The standard form of monogenic obesity reported so far is the MC4R deficiency [71,72]. Our data showed that genes of cluster 1 are enriched in interleukin-10 signaling and interact with *CXCL8*, *CCL5*, *CCR2*, and *CCR5* (Figure 5). These genes are believed to contribute to the macrophage function in adipose tissue and insulin resistance in the “adipokine hypothesis”, which is the key trait of adipose cells (white) to act as an endocrine organ and to keep releasing a number of adipokines, which signal via paracrine and hormonal processes [73]. Inflammatory processes include most of these secreted molecules, including IL-1 β , MCP-1, TNF- α , and IL-6, as described above. In obesity, the increasing adipose mass raises the circulating levels of these inflammatory markers and thus is believed to lead to insulin resistance and T2D progression. In vitro studies indicate that different inflammatory and oxidative stress factors suppress adiponectin expression [74]. In obese individuals, decreased levels

of adiponectin and elevated levels of resistin are considered to signify the possibility of developing diabetes, even years before the advent of the condition [75].

Apart from our data that supports the three hypotheses of diabetes molecular mechanisms, our PPI network highlights the potential links to causal factors of metabolic complications in obesity. For instance, the *POMC* gene is involved in diabetes cluster 1 genes (Figure 4A). Studies of proopiomelanocortin (*POMC*) mutations showed an association between obesity in humans and a subsequent increase in the risk of obesity-related diseases, such as T1D and T2D [76,77]. The deficiency of glucose sensing by *POMC* neurons was observed in obese mice. This loss of glucose sensing by glucose-excited neurons was shown to involve a mitochondrial protein UCP2 (uncoupling protein 2) and is believed to have a role in T2D development [78]. Whereas the genes of cluster 1 include genes of the renin–angiotensin system (*RAS*) genes (Figures 4A and 5). The *RAS* is involved in the regulation of fluid balance, blood pressure, and electrolyte [79]. *RAS* genes are widely expressed in adipose tissue and include angiotensinogen (*AGT*), angiotensin-converting enzyme (*ACE*), renin (*REN*), chymase (*CMA1*), type 1 angiotensin I receptor (*AGTR1*), and type 1 angiotensin II receptor (*AGTR2*) [80]. Adipose tissue *RAS* and systemic *RAS* are believed to be associated with obesity and insulin resistance, which might be a potential causal factor for metabolic complications in obesity [81,82].

Variations in any of these genes that are an integral part of the PPI network and pathways are known to be associated with diabetes (Figure 4A). The heritability of obesity can be explained not only by the variants of obesity and fat distribution but also by epigenetic marks. Extreme forms of obesity, such as Prader–Willi syndrome, are caused by imprinting failure. Environmental exposure affects the epigenetic profile during critical growth periods and has been persuasively linked to obesity susceptibility [83]. Only obese individuals susceptible to insulin secretion deficiencies would develop diabetes because insulin resistance alone cannot trigger diabetes. This predisposition is resolved by genetic and environmental factors [84]. Therefore, obesity may incite diabetes as an epigenetic phenomenon in genetically predisposed individuals [85]. Current efforts to combat obesity through exercise, diet, and surgery are largely ineffective in providing long-term, sustainable solutions. The inability to understand the pathophysiology of obesity and T2D makes the development of therapeutics and preventive strategies challenging. Identification of genetic biomarkers involved in disease predisposition may help explain the pathogenesis of the disease and provide opportunities for personalized medicine [86].

5. Conclusions

Diabetes is considered as a global health concern that necessitates the understanding of its molecular pathology. Excessive secretion of adipokines in obesity plays a critical role in T1D, T2D, and MODY. In addition, diabetes results in organ dysfunction, including endocrine, respiratory, and liver, and immune dysfunction is exacerbated by the production of inflammatory adipokines. Our study specifically focused on unraveling the molecular etiology of obesity-associated diabetes genes by demonstrating the interconnected pathways of diabetes-related signaling cascades. Established signaling cascades from our study provide an interplay between the genetic links of diabetes, which resulted in patients with long-term diabetic complications. We found the central signaling cascades, such as adipocytes regulatory function of lipolysis, FOXO-mediated transcription of oxidative stress, regulation of lipolysis in adipocytes, insulin receptor signaling pathway, and IGF1R signaling cascade, are involved in the pathogenesis of diabetes. The findings of this study will help identify potential novel genetic biomarkers for clinical molecular diagnosis of the disease. Moreover, this study serves as a potential platform for the discovery of future therapeutic drug targets.

Supplementary Materials: The following are available online at <http://www.mdpi.com/2073-4425/11/11/1256/s1>, Table S1: The most significant obesity genes that are common between the different types of diabetes; T1D, T2D, and MODY, Table S2: Involved GO terms from ClueGO enrichment analysis for cluster 1 genes., Table S3: Involved GO terms from ClueGO enrichment analysis for cluster 2 genes., Table S4: Involved GO terms from ClueGO enrichment analysis for cluster 3 genes.

Author Contributions: U.K.S., T.K.D., H.Z., and G.P.D.C. were involved in the design of the study. U.K.S. involved in the data collection and conducted the experiment. U.K.S., T.K.D., B.R., A.P.V., S.Y., T.A., S.O., S.E. involved in the acquisition, analysis, and interpreting the results. U.K.S., T.K.D., and R.B. drafted the manuscript. G.P.D.C. and H.Z. supervised the entire study and were involved in study design, the acquisition, analysis, understanding of the data, and critically reviewed the manuscript. All authors edited and approved the submitted version of the article. All authors have read and agreed to the published version of the manuscript.

Funding: The APC was funded by Qatar University Internal Grant number [QUST-2-CHS-2020-12].

Acknowledgments: This publication was supported by Qatar University Internal Grant No QUST-2-CHS-2020-12. S. Udhaya Kumar, one of the authors, gratefully acknowledges the Indian Council of Medical Research (ICMR), India, for providing him a Senior Research Fellowship [ISRM/11(93)/2019]. The authors would like to thank the management of the Vellore Institute of Technology, India, and Qatar University, Qatar, for providing the necessary research facilities and encouragement to carry out this work.

Conflicts of Interest: The authors have declared that no conflict of interest exists.

References

- Shafir, E. Development and consequences of insulin resistance: Lessons from animals with hyperinsulinaemia. *Diabetes Metab.* **1996**, *22*, 122–131. [PubMed]
- Zimmet, P. Globalization, coca-colonization and the chronic disease epidemic: Can the Doomsday scenario be averted? *J. Intern. Med.* **2000**, *247*, 301–310. [CrossRef] [PubMed]
- Kahn, S.E.; Hull, R.L.; Utzschneider, K.M. Mechanisms linking obesity to insulin resistance and type 2 diabetes. *Nature* **2006**, *444*, 840–846. [CrossRef] [PubMed]
- Kaneto, H. Pancreatic β -cell glucose toxicity in type 2 diabetes mellitus. *Curr. Diabetes Rev.* **2015**, *11*, 2–6. [CrossRef] [PubMed]
- Sáez, T.; Toledo, F.; Sobrevia, L. Impaired signalling pathways mediated by extracellular vesicles in diabetes. *Mol. Asp. Med.* **2019**, *66*, 13–20. [CrossRef] [PubMed]
- Villalobos-Labra, R.; Silva, L.; Subiabre, M.; Araos, J.; Salsoso, R.; Fuenzalida, B.; Sáez, T.; Toledo, F.; González, M.; Quezada, C.; et al. Akt/mTOR Role in Human Foetoplacental Vascular Insulin Resistance in Diseases of Pregnancy. *J. Diabetes Res.* **2017**, *2017*, 1–13. [CrossRef] [PubMed]
- Cardoso, S.; Moreira, P.I. Diabetes and brain disturbances: A metabolic perspective. *Mol. Asp. Med.* **2019**, *66*, 71–79. [CrossRef]
- Ozcan, U.; Cao, Q.; Yilmaz, E.; Lee, A.H.; Iwakoshi, N.N.; Özdelen, E.; Tuncman, G.; Görgün, C.; Glimcher, L.H.; Hotamisligil, G.S. Endoplasmic Reticulum Stress Links Obesity, Insulin Action, and Type 2 Diabetes. *Science* **2004**, *306*, 457–461. [CrossRef]
- Chadt, A.; Scherneck, S.; Joost, H.-G.; Al-Hasani, H. Molecular links between Obesity and Diabetes: “Diabetes”. In *Endotext*; Feingold, K.R., Anawalt, B., Boyce, A., Eds.; MDText.com, Inc. 2000. Available online: <http://www.ncbi.nlm.nih.gov/books/NBK279051/> (accessed on 12 August 2020).
- Gregor, M.F.; Hotamisligil, G.S. Inflammatory mechanisms in obesity. *Annu. Rev. Immunol.* **2011**, *29*, 415–445. [CrossRef]
- Xu, H.; Barnes, G.T.; Yang, Q.; Tan, G.; Yang, D.; Chou, C.J.; Sole, J.; Nichols, A.; Ross, J.S.; Tartaglia, L.A.; et al. Chronic inflammation in fat plays a crucial role in the development of obesity-related insulin resistance. *J. Clin. Invest.* **2003**, *112*, 1821–1830. [CrossRef]
- Smith, U. Abdominal obesity: A marker of ectopic fat accumulation. *J. Clin. Invest.* **2015**, *125*, 1790–1792. [CrossRef]
- Tan, C.Y.; Vidal-Puig, A. Adipose tissue expandability: The metabolic problems of obesity may arise from the inability to become more obese. *Biochem. Soc. Trans.* **2008**, *36*, 935–940. [CrossRef] [PubMed]
- Guilherme, A.; Virbasius, J.V.; Puri, V.; Czech, M.P. Adipocyte dysfunctions linking obesity to insulin resistance and type 2 diabetes. *Nat. Rev. Mol. Cell Biol.* **2008**, *9*, 367–377. [CrossRef] [PubMed]
- Ogurtsova, K.; Fernandes, J.D.R.; Huang, Y.; Linnenkamp, U.; Guariguata, L.; Cho, N.; Cavan, D.; Shaw, J.; E Makaroff, L. IDF Diabetes Atlas: Global estimates for the prevalence of diabetes for 2015 and 2040. *Diabetes Res. Clin. Pract.* **2017**, *128*, 40–50. [CrossRef]
- Zimmet, P.; Alberti, K.G.M.M.; Shaw, J. Global and societal implications of the diabetes epidemic. *Nature* **2001**, *414*, 782–787. [CrossRef]

17. Redinger, R.N. The pathophysiology of obesity and its clinical manifestations. *Gastroenterol. Hepatol.* **2007**, *3*, 856–863.
18. Fowler, M.J. Microvascular and Macrovascular Complications of Diabetes. *Clin. Diabetes* **2008**, *26*, 77–82. [[CrossRef](#)]
19. Haffner, S.M.; D'Agostino, R.; Mykkanen, L.; Tracy, R.; Howard, B.; Rewers, M.; Selby, J.; Savage, P.J.; Saad, M.F. Insulin sensitivity in subjects with type 2 diabetes. Relationship to cardiovascular risk factors: The Insulin Resistance Atherosclerosis Study. *Diabetes Care* **1999**, *22*, 562–568. [[CrossRef](#)]
20. Rankinen, T.; Zuberi, A.; Chagnon, Y.C.; Weisnagel, S.J.; Argyropoulos, G.; Walts, B.; Pérusse, L.; Bouchard, C. The human obesity gene map: The 2005 update. *Obesity* **2006**, *14*, 529–644. [[CrossRef](#)]
21. Butler, M.G.; McGuire, A.; Manzardo, A.M. Clinically relevant known and candidate genes for obesity and their overlap with human infertility and reproduction. *J. Assist. Reprod. Genet.* **2015**, *32*, 495–508. [[CrossRef](#)] [[PubMed](#)]
22. Choquet, H.; Meyre, D. Genetics of Obesity: What have we Learned? *Curr. Genom.* **2011**, *12*, 169–179. [[CrossRef](#)]
23. Gaulton, K.J.; the DIAbetes Genetics Replication And Meta-analysis (DIAGRAM) Consortium; Ferreira, T.; Lee, Y.; Raimondo, A.; Maegi, R.; Reschen, M.E.; Mahajan, A.; E Locke, A.; Rayner, N.W.; et al. Genetic fine mapping and genomic annotation defines causal mechanisms at type 2 diabetes susceptibility loci. *Nat. Genet.* **2015**, *47*, 1415–1425. [[CrossRef](#)]
24. Gloyn, A.L.; Reimann, F.; Girard, C.; Edghill, E.L.; Proks, P.; Pearson, E.; Temple, I.K.; Mackay, D.J.G.; Shield, J.P.H.; Freedberg, D.; et al. Relapsing diabetes can result from moderately activating mutations in KCNJ11. *Hum. Mol. Genet.* **2005**, *14*, 925–934. [[CrossRef](#)]
25. Flanagan, S.P.; Edghill, E.L.; Gloyn, A.L.; Ellard, S.; Hattersley, A.T. Mutations in KCNJ11, which encodes Kir6.2, are a common cause of diabetes diagnosed in the first 6 months of life, with the phenotype determined by genotype. *Diabetologia* **2006**, *49*, 1190–1197. [[CrossRef](#)]
26. Bonnefond, A.; Philippe, J.; Durand, E.; Dechaume, A.; Huyvaert, M.; Montagne, L.; Marre, M.; Balkau, B.; Fajardy, I.; Vambergue, A.; et al. Whole-exome sequencing and high throughput genotyping identified KCNJ11 as the thirteenth MODY gene. *PLoS ONE* **2012**, *7*, e37423. [[CrossRef](#)]
27. Baturin, A.K.; Sorokina, E.Y.; Pogozheva, A.V.; Peskova, E.V.; Makurina, O.N.; Tutelyan, V.A. The study of the association of polymorphism rs5219 gene KCNJ11 with obesity and the risk of type 2 diabetes among residents of the Moscow Region. *Vopr. Pitan.* **2015**, *84*, 4–9.
28. Froguel, P.; Zouali, H.; Vionnet, N.; Velho, G.; Vaxillaire, M.; Sun, F.; Lesage, S.; Stoffel, M.; Takeda, J.; Passa, P.; et al. Familial Hyperglycemia Due to Mutations in Glucokinase—Definition of a Subtype of Diabetes Mellitus. *N. Engl. J. Med.* **1993**, *328*, 697–702. [[CrossRef](#)]
29. Yamagata, K.; Oda, N.; Kaisaki, P.J.; Menzel, S.; Furuta, H.; Vaxillaire, M.; Southam, L.; Cox, R.D.; Lathrop, G.M.; Boriraj, V.V.; et al. Mutations in the hepatocyte nuclear factor-1 α gene in maturity-onset diabetes of the young (MODY3). *Nature* **1996**, *384*, 455–458. [[CrossRef](#)] [[PubMed](#)]
30. Horikawa, Y.; Iwasaki, N.; Hara, M.; Furuta, H.; Hinokio, Y.; Cockburn, B.N.; Lindner, T.; Yamagata, K.; Ogata, M.; Tomonaga, O.; et al. Mutation in hepatocyte nuclear factor-1 β gene (TCF2) associated with MODY. *Nat. Genet.* **1997**, *17*, 384–385. [[CrossRef](#)]
31. Yamagata, K.; Furuta, H.; Oda, N.; Kaisaki, P.J.; Menzel, S.; Cox, N.J.; Fajans, S.S.; Signorini, S.; Stoffel, M.; Bell, G.I. Mutations in the hepatocyte nuclear factor-4 α gene in maturity-onset diabetes of the young (MODY1). *Nature* **1996**, *384*, 458–460. [[CrossRef](#)]
32. Staffers, D.A.; Ferrer, J.; Clarke, W.L.; Habener, J.F. Early-onset type-II diabetes mellitus (MODY4) linked to IPF1. *Nat. Genet.* **1997**, *17*, 138–139. [[CrossRef](#)] [[PubMed](#)]
33. Malecki, M.T.; Jhala, U.S.; Antonellis, A.; Fields, L.; Doria, A.; Orban, T.; Saad, M.; Warram, J.H.; Montminy, M.; Krolewski, A.S. Mutations in NEUROD1 are associated with the development of type 2 diabetes mellitus. *Nat. Genet.* **1999**, *23*, 323–328. [[CrossRef](#)] [[PubMed](#)]
34. Fajans, S.S.; Bell, G.I.; Polonsky, K.S. Molecular Mechanisms and Clinical Pathophysiology of Maturity-Onset Diabetes of the Young. *N. Engl. J. Med.* **2001**, *345*, 971–980. [[CrossRef](#)] [[PubMed](#)]
35. Hegele, R.A.; Cao, H.; Harris, S.B.; Hanley, A.J.G.; Zinman, B. The Hepatic Nuclear Factor-1 α G319S Variant Is Associated with Early-Onset Type 2 Diabetes in Canadian Oji-Cree. *J. Clin. Endocrinol. Metab.* **1999**, *84*, 1077–1082. [[CrossRef](#)]

36. Scuteri, A.; Sanna, S.; Chen, W.-M.; Uda, M.; Albai, G.; Strait, J.; Najjar, S.; Nagaraja, R.; Orrú, M.; Usala, G.; et al. Genome-wide association scan shows genetic variants in the FTO gene are associated with obesity-related traits. *PLoS Genet.* **2007**, *3*, e115. [[CrossRef](#)]
37. Sutherland, A.P.R.; Wali, J.A.; Thomas, H.E. Linking obesity with type 2 diabetes: The role of T-bet. *Diabetes Metab. Syndr. Obesity Targets Ther.* **2014**, *7*, 331–340. [[CrossRef](#)]
38. De Mello, A.H.; Costa, A.B.; Engel, J.D.G.; Rezin, G.T. Mitochondrial dysfunction in obesity. *Life Sci. Life Sci.* **2018**, *192*, 26–32. [[CrossRef](#)]
39. Lowell, B.B.; Shulman, G.I. Mitochondrial dysfunction and type 2 diabetes. *Science* **2005**, *307*, 384–387. [[CrossRef](#)]
40. Ray, I.; Bhattacharya, A.; De, R.K. OCDD: An obesity and co-morbid disease database. *BioData Min.* **2017**, *10*, 33. [[CrossRef](#)]
41. Yu, Y.; Ouyang, Y.; Yao, W. shinyCircos: An R/Shiny application for interactive creation of Circos plot. *Bioinformatics* **2018**, *34*, 1229–1231. [[CrossRef](#)]
42. Kent, W.J.; Sugnet, C.W.; Furey, T.S.; Roskin, K.M.; Pringle, T.H.; Zahler, A.M.; Haussler, A.D. The human genome browser at UCSC. *Genome Res.* **2002**, *12*, 996–1006. [[CrossRef](#)] [[PubMed](#)]
43. Szklarczyk, D.; Franceschini, A.; Wyder, S.; Forslund, K.; Heller, D.; Huerta-Cepas, J.; Simonovic, M.; Roth, A.; Santos, A.; Tsafou, K.P.; et al. STRING v10: Protein-protein interaction networks, integrated over the tree of life. *Nucleic Acids Res.* **2014**, *43*, D447–D452. [[CrossRef](#)] [[PubMed](#)]
44. Shannon, P.; Markiel, A.; Ozier, O.; Baliga, N.S.; Wang, J.T.; Ramage, D.; Amin, N.; Schwikowski, B.; Ideker, T. Cytoscape: A software environment for integrated models of biomolecular interaction networks. *Genome Res.* **2003**, *13*, 2498–2504. [[CrossRef](#)] [[PubMed](#)]
45. Bader, G.D.; Hogue, C.W.V. An automated method for finding molecular complexes in large protein interaction networks. *BMC Bioinform.* **2003**, *4*, 2. [[CrossRef](#)] [[PubMed](#)]
46. Bindea, G.; Mlecnik, B.; Hackl, H.; Charoentong, P.; Tosolini, M.; Kirilovsky, A.; Fridman, W.-H.; Pagès, F.; Trajanoski, Z.; Galon, J. ClueGO: A Cytoscape plugin to decipher functionally grouped gene ontology and pathway annotation networks. *Bioinformatics* **2009**, *25*, 1091–1093. [[CrossRef](#)]
47. Bindea, G.; Galon, J.; Mlecnik, B. CluePedia Cytoscape plugin: Pathway insights using integrated experimental and in silico data. *Bioinformatics* **2013**, *29*, 661–663. [[CrossRef](#)]
48. Kumar, S.U.; Kumar, D.T.; Siva, R.; Doss, C.G.P.; Zayed, H. Integrative Bioinformatics Approaches to Map Potential Novel Genes and Pathways Involved in Ovarian Cancer. *Front. Bioeng. Biotechnol.* **2019**, *7*, 391. [[CrossRef](#)]
49. Kumar, S.U.; Kumar, D.T.; Siva, R.; Doss, C.G.P.; Younes, S.; Younes, N.; Sidenna, M.; Zayed, H. Dysregulation of Signaling Pathways Due to Differentially Expressed Genes From the B-Cell Transcriptomes of Systemic Lupus Erythematosus Patients—A Bioinformatics Approach. *Front. Bioeng. Biotechnol.* **2020**, *8*, 276. [[CrossRef](#)]
50. Kumar, S.U.; Kumar, D.T.; Bithia, R.; Sankar, S.; Magesh, R.; Sidenna, M.; Doss, C.G.P.; Zayed, H. Analysis of Differentially Expressed Genes and Molecular Pathways in Familial Hypercholesterolemia Involved in Atherosclerosis: A Systematic and Bioinformatics Approach. *Front. Genet.* **2020**, *11*, 734. [[CrossRef](#)]
51. Feinstein, R.; Kanety, H.; Papa, M.Z.; Lunenfeld, B.; Karasik, A. Tumor necrosis factor- α suppresses insulin-induced tyrosine phosphorylation of insulin receptor and its substrates. *J. Biol. Chem.* **1993**, *268*, 26055–26058.
52. Kim, J.; Bachmann, R.A.; Chen, J. Interleukin-6 and insulin resistance. *Vitam. Horm.* **2009**, *80*, 613–633. [[CrossRef](#)] [[PubMed](#)]
53. Hotamisligil, G.K.S.; Peraldi, P.; Budavari, A.; Ellis, R.; White, M.F.; Spiegelman, B.M. IRS-1-mediated inhibition of insulin receptor tyrosine kinase activity in TNF- α - and obesity-induced insulin resistance. *Science* **1996**, *271*, 665–670. [[CrossRef](#)] [[PubMed](#)]
54. Febbraio, M.A. Role of interleukins in obesity: Implications for metabolic disease. *Trends Endocrinol. Metab.* **2014**, *25*, 312–319. [[CrossRef](#)]
55. Mandrup-Poulsen, T. The role of interleukin-1 in the pathogenesis of IDDM. *Diabetologia* **1996**, *39*, 1005–1029. [[CrossRef](#)]
56. Ponugoti, B.; Dong, G.; Graves, D.T. Role of forkhead transcription factors in diabetes-induced oxidative stress. *Exp. Diabetes Res.* **2012**, *2012*, 1–7. [[CrossRef](#)]

57. Kamagate, A.; Dong, H.H. FoxO1 integrates insulin signaling to VLDL production. *Cell Cycle* **2008**, *7*, 3162–3170. [[CrossRef](#)]
58. Wang, Y.; Zhou, Y.; Graves, D.T. FOXO transcription factors: Their clinical significance and regulation. *BioMed Res. Int.* **2014**, *2014*, 1–13. [[CrossRef](#)]
59. Lewis, G.F.; Carpentier, A.; Adeli, K.; Giacca, A. Disordered fat storage and mobilization in the pathogenesis of insulin resistance and type 2 diabetes. *Endocr. Rev.* **2002**, *23*, 201–229. [[CrossRef](#)]
60. Figueroa, D.M.; Gordon, E.M.; Yao, X.; Levine, S.J. Chapter 13—Apolipoproteins as context-dependent regulators of lung inflammation. In *Mechanisms and Manifestations of Obesity in Lung Disease*; Johnston, R.A., Suratt, B.T., Eds.; Academic Press: Cambridge, MA, USA, 2019; pp. 301–326. [[CrossRef](#)]
61. Lönn, M.; Mehlig, K.; Bengtsson, C.; Lissner, L. Adipocyte size predicts incidence of type 2 diabetes in women. *FASEB J.* **2009**, *24*, 326–331. [[CrossRef](#)] [[PubMed](#)]
62. Krotkiewski, M.; Björntorp, P.; Sjöström, L.; Smith, U. Impact of obesity on metabolism in men and women. Importance of regional adipose tissue distribution. *J. Clin. Investig.* **1983**, *72*, 1150–1162. [[CrossRef](#)]
63. Perry, R.J.; Camporez, J.-P.G.; Kursawe, R.; Titchenell, P.M.; Zhang, D.; Perry, C.J.; Jurczak, M.J.; Abudukadier, A.; Han, M.S.; Zhang, X.-M.; et al. Hepatic Acetyl CoA Links Adipose Tissue Inflammation to Hepatic Insulin Resistance and Type 2 Diabetes. *Cell* **2015**, *160*, 745–758. [[CrossRef](#)] [[PubMed](#)]
64. Smith, U.; Kahn, B.B. Adipose tissue regulates insulin sensitivity: Role of adipogenesis, de novo lipogenesis and novel lipids. *J. Intern. Med.* **2016**, *280*, 465–475. [[CrossRef](#)] [[PubMed](#)]
65. Hamann, A.; Matthaei, S. Regulation of energy balance by leptin. *Exp. Clin. Endocrinol. Diabetes* **2009**, *104*, 293–300. [[CrossRef](#)]
66. Daghestani, M.H.; Daghestani, M.H.; Daghestani, M.H.; Eldali, A.; Hassan, Z.K.; Elamin, M.H.; Warsy, A.S. ADRB3 polymorphism rs4994 (Trp64Arg) associates significantly with bodyweight elevation and dyslipidaemias in Saudis but not rs1801253 (Arg389Gly) polymorphism in ARDB1. *Lipids Health Dis.* **2018**, *17*, 58. [[CrossRef](#)] [[PubMed](#)]
67. Galavi, H.; Noorzehi, N.; Saravani, R.; Sargazi, S.; Mollashahee-Kohkan, F.; Shahraki, H. Genetic polymorphism in ADRB-1 is associated with type 2 diabetes susceptibility in Iranian population. *Gene Rep.* **2018**, *12*, 171–174. [[CrossRef](#)]
68. Estrada-Velasco, B.I.; Cruz, M.; Madrid-Marina, V.; A Martínez-Nava, G.; Gomez-Zamudio, J.; I Burguete-García, A. IRS1, TCF7L2, ADRB1, PPARC, and HHEX Polymorphisms Associated with Atherogenic Risk in Mexican Population. *BioMed Res. Int.* **2013**, *2013*, 1–7. [[CrossRef](#)]
69. Willer, C.J.; Speliotes, E.K.; Loos, R.J.; Li, S.; Lindgren, C.M.; Heid, I.M.; Lettre, G. Six new loci associated with body mass index highlight a neuronal influence on body weight regulation. *Nat. Genet.* **2009**, *41*, 25–34. [[CrossRef](#)]
70. Timper, K.; Brüning, J.C. Hypothalamic circuits regulating appetite and energy homeostasis: Pathways to obesity. *Dis. Model. Mech.* **2017**, *10*, 679–689. [[CrossRef](#)]
71. Doulla, M.; McIntyre, A.D.; Hegele, R.A.; Gallego, P.H. A novel MC4R mutation associated with childhood-onset obesity: A case report. *Paediatr. Child Health* **2014**, *19*, 515–518. [[CrossRef](#)]
72. Qi, L.; Kraft, P.; Hunter, D.J.; Hu, F.B. The common obesity variant near MC4R gene is associated with higher intakes of total energy and dietary fat, weight change and diabetes risk in women. *Hum. Mol. Genet.* **2008**, *17*, 3502–3508. [[CrossRef](#)]
73. Jung, U.J.; Choi, M.-S. Obesity and its metabolic complications: The role of adipokines and the relationship between obesity, inflammation, insulin resistance, dyslipidemia and nonalcoholic fatty liver disease. *Int. J. Mol. Sci.* **2014**, *15*, 6184–6223. [[CrossRef](#)]
74. Lee, S.; Kwak, H.-B. Role of adiponectin in metabolic and cardiovascular disease. *J. Exerc. Rehabil.* **2014**, *10*, 54–59. [[CrossRef](#)]
75. DeRosa, G.; Catena, G.; Gaudio, G.; D’Angelo, A.; Maffioli, P. Adipose tissue dysfunction and metabolic disorders: Is it possible to predict who will develop type 2 diabetes mellitus? Role of markers in the progression of diabetes in obese patients (The RESISTIN trial). *Cytokine* **2020**, *127*, 154947. [[CrossRef](#)]
76. Farooqi, I.S.; Drop, S.; Clements, A.; Keogh, J.M.; Biernacka, J.; Lowenbein, S.; Challis, B.G.; O’Rahilly, S. Heterozygosity for a POMC-null mutation and increased obesity risk in humans. *Diabetes* **2006**, *55*, 2549–2553. [[CrossRef](#)]

77. Aslan, I.R.; Ranadive, S.A.; Valle, I.; Kollipara, S.; Noble, J.A.; Vaisse, C. The melanocortin system and insulin resistance in humans: Insights from a patient with complete POMC deficiency and type 1 diabetes mellitus. *Int. J. Obes.* **2013**, *38*, 148–151. [[CrossRef](#)] [[PubMed](#)]
78. Parton, L.E.; Ye, C.P.; Coppari, R.; Enriori, P.J.; Choi, B.; Zhang, C.-Y.; Xu, C.; Vianna, C.R.; Balthasar, N.; Lee, C.E.; et al. Glucose sensing by POMC neurons regulates glucose homeostasis and is impaired in obesity. *Nature* **2007**, *449*, 228–232. [[CrossRef](#)] [[PubMed](#)]
79. Schmieder, R.E.; Hilgers, K.F.; Schlaich, M.P.; Schmidt, B.M.W. Renin-angiotensin system and cardiovascular risk. *Lancet* **2007**, *369*, 1208–1219. [[CrossRef](#)]
80. Engeli, S.; Gorzelniak, K.; Kreutz, R.; Runkel, N.; Distler, A.; Sharma, A.M. Co-expression of renin-angiotensin system genes in human adipose tissue. *J. Hypertens.* **1999**, *17*, 555–560. [[CrossRef](#)] [[PubMed](#)]
81. Yvan-Charvet, L.; Quignard-Boulangé, A. Role of adipose tissue renin-angiotensin system in metabolic and inflammatory diseases associated with obesity. *Kidney Int.* **2011**, *79*, 162–168. [[CrossRef](#)] [[PubMed](#)]
82. Kalupahana, N.S.; Moustaid-Moussa, N. The renin-angiotensin system: A link between obesity, inflammation and insulin resistance. *Obes. Rev.* **2011**, *13*, 136–149. [[CrossRef](#)] [[PubMed](#)]
83. Herrera, B.M.; Keildson, S.; Lindgren, C.M. Genetics and epigenetics of obesity. *Maturitas* **2011**, *69*, 41–49. [[CrossRef](#)] [[PubMed](#)]
84. Lev-Ran, A. Thrifty genotype: How applicable is it to obesity and type 2 diabetes? *Diabetes Rev.* **1999**, *7*, 1–22.
85. Kahn, C.R. Insulin Action, Diabetogenes, and the Cause of Type II Diabetes. *Diabetes* **1994**, *43*, 1066–1085. [[CrossRef](#)] [[PubMed](#)]
86. Waterfield, T.; Gloyn, A.L. Monogenic β -cell dysfunction in children: Clinical phenotypes, genetic etiology and mutational pathways. *Pediatr. Health* **2008**, *2*, 517–532. [[CrossRef](#)]

Publisher’s Note: MDPI stays neutral with regard to jurisdictional claims in published maps and institutional affiliations.



© 2020 by the authors. Licensee MDPI, Basel, Switzerland. This article is an open access article distributed under the terms and conditions of the Creative Commons Attribution (CC BY) license (<http://creativecommons.org/licenses/by/4.0/>).